



EISCAT Space Debris 01 Oct–07 Oct 2007

Monitored altitude zones in IPYW are Zone 1: 149–489 km, Zone 2: 706–1047 km, Zone 3: 1264–1605 km, and Zone 4: 1823–2164 km. Plots generated October 9, 2007 (Jm).

List of Figures

1	Overall event rate.	1
2	Altitude and Doppler-velocity.	2
3	Altitude, Doppler-velocity, and radar cross section v time in Zone 2.	3
4	Altitude, Doppler-velocity, and radar cross section v time in Zone 3.	4
5	Altitude v time.	5
6	Event rate v altitude.	5
7	Doppler-velocity v altitude.	5
8	Event rate v Doppler-velocity.	6
9	Event rate v radar cross section.	6

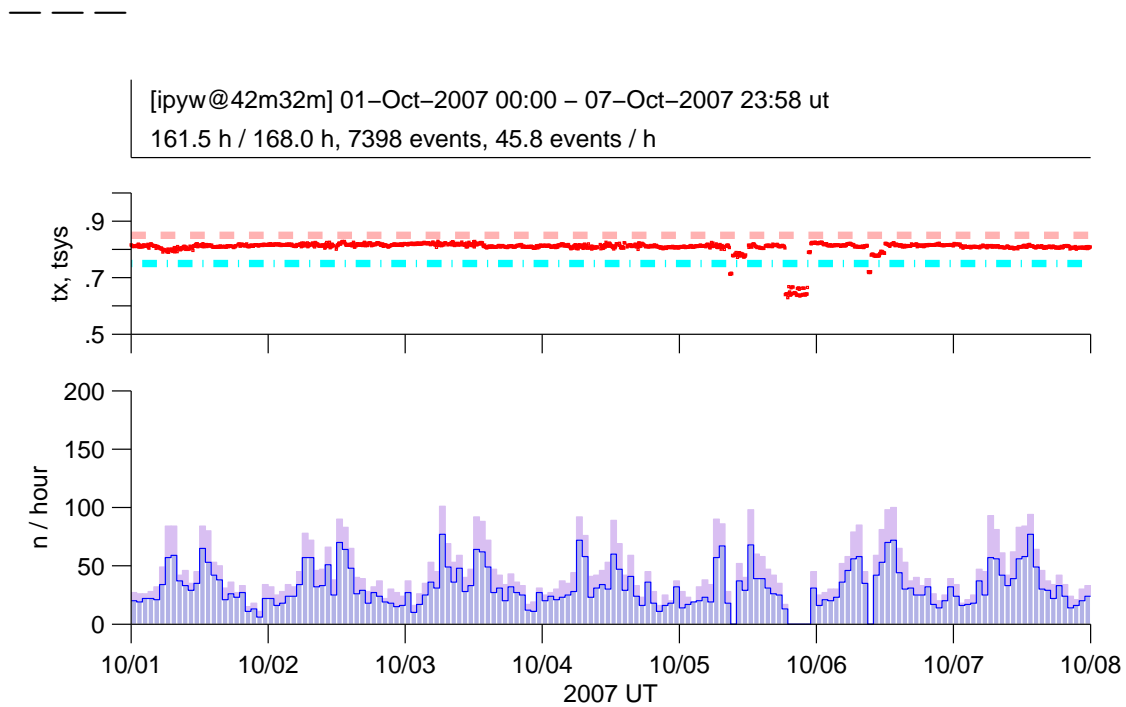
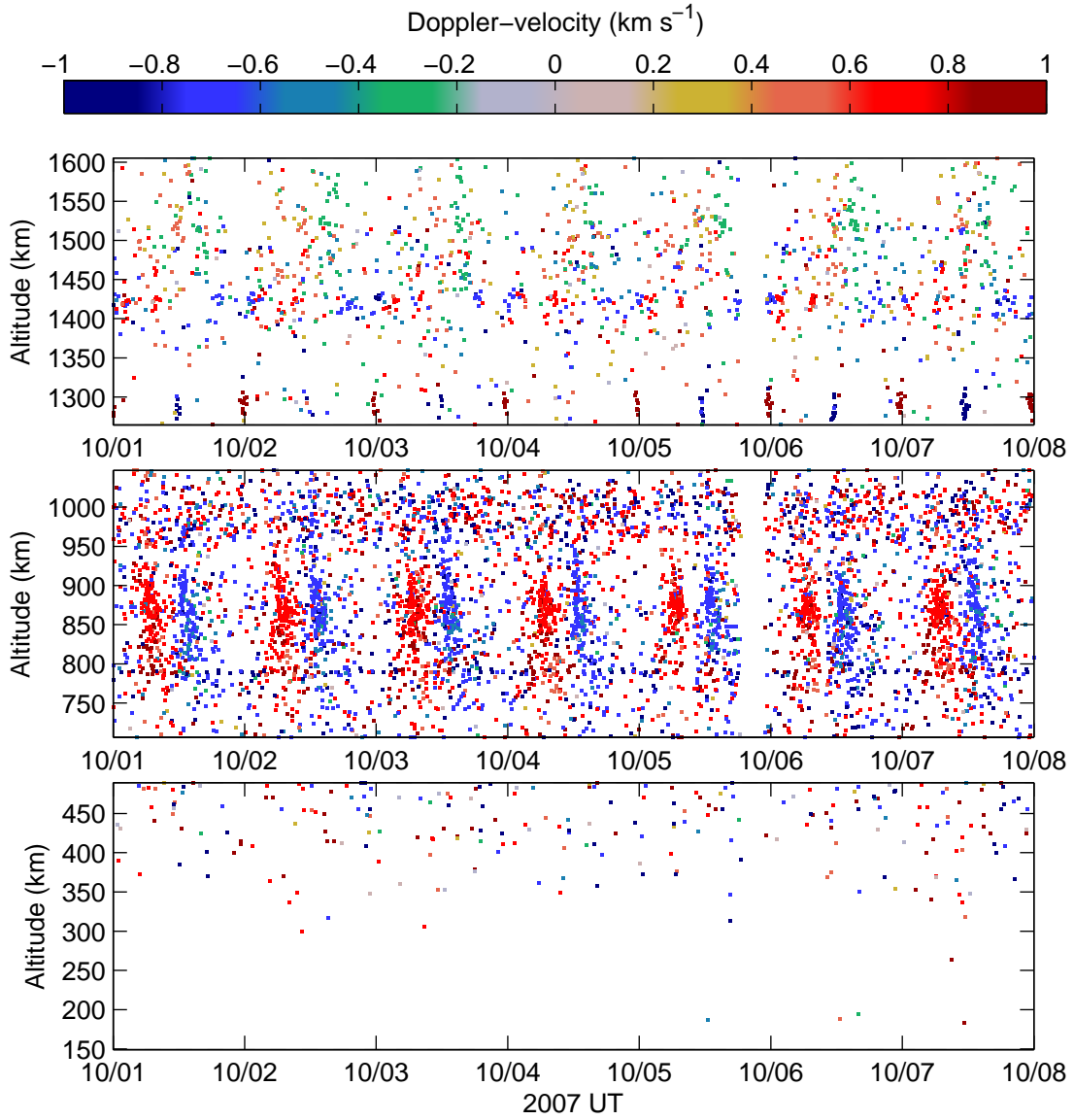
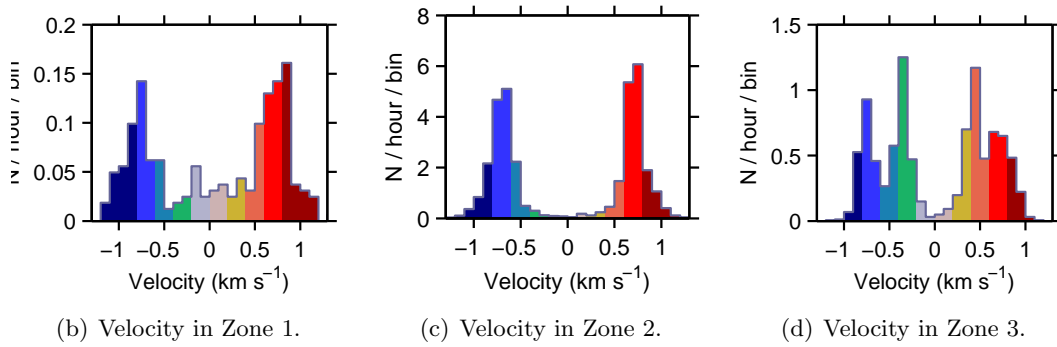


Figure 1: **Overall event rate.** Header panel, first line: first event – last event of the period. Second line: good measuring time; time interval between first and last event; total number of events; mean event count per good hour. Middle panel: peak transmitted power in MW (red); the constant transmitted power used in analysis (dashed red); the constant system temperature used in analysis in units of 100 K (dashed cyan). Bottom panel: number of events per hour, with “strong” events ($ENR > 400$) in blue and “weak” events ($100 < ENR < 400$) in red.



(a) Altitude and velocity v time through Zone 1(bottom) to Zone 3(top).

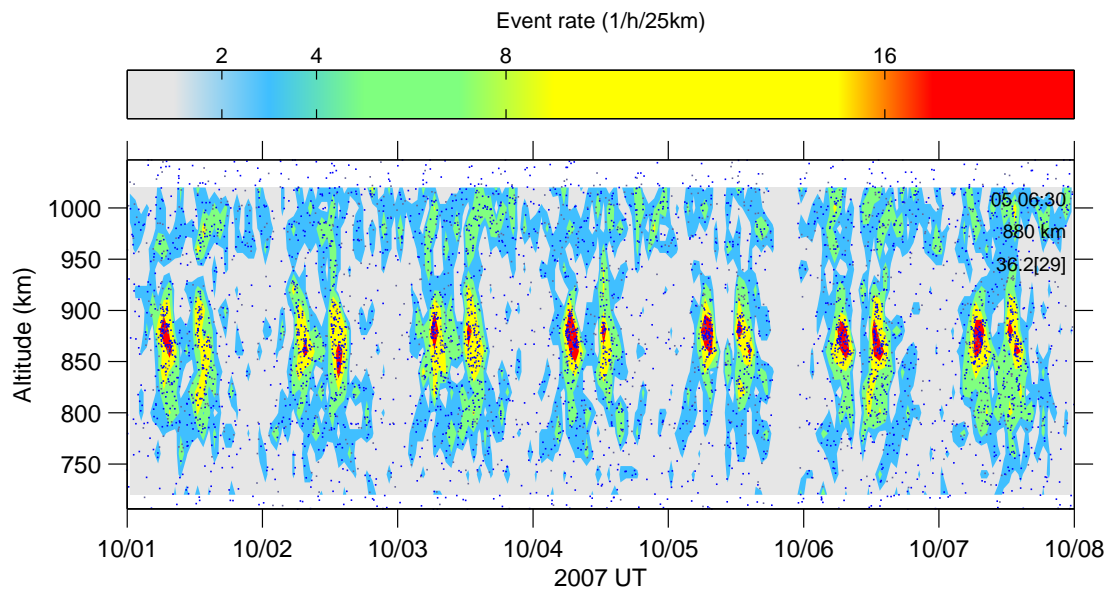


(b) Velocity in Zone 1.

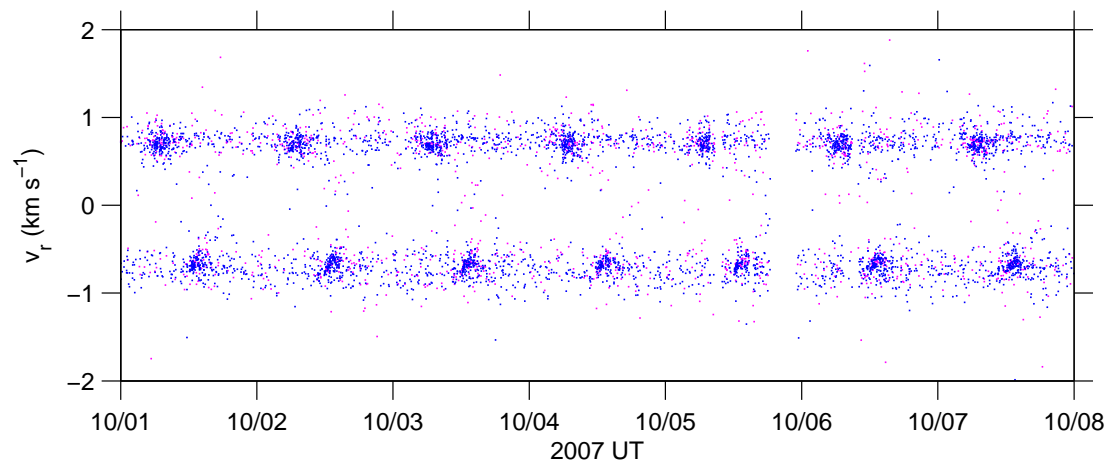
(c) Velocity in Zone 2.

(d) Velocity in Zone 3.

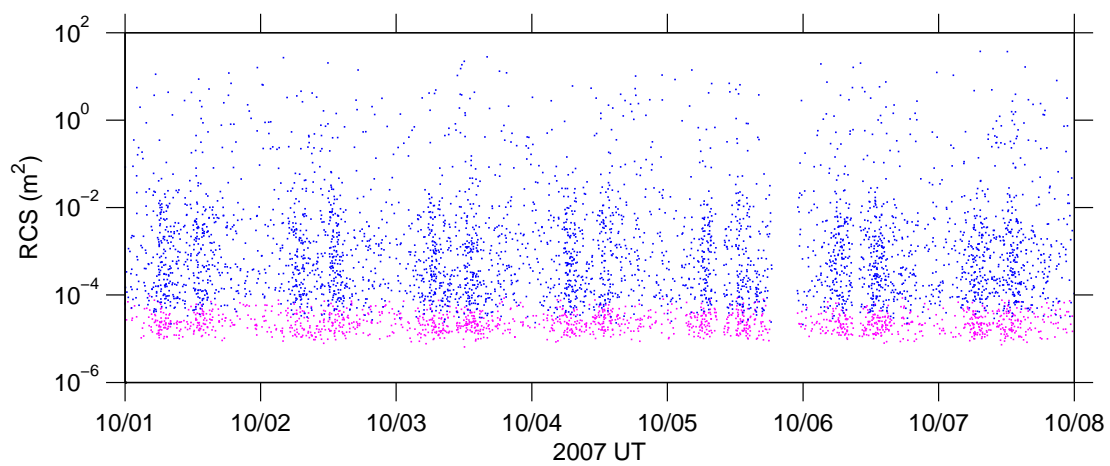
Figure 2: Altitude and Doppler-velocity.



(a) Altitude v time (dots), and events rate (contours).

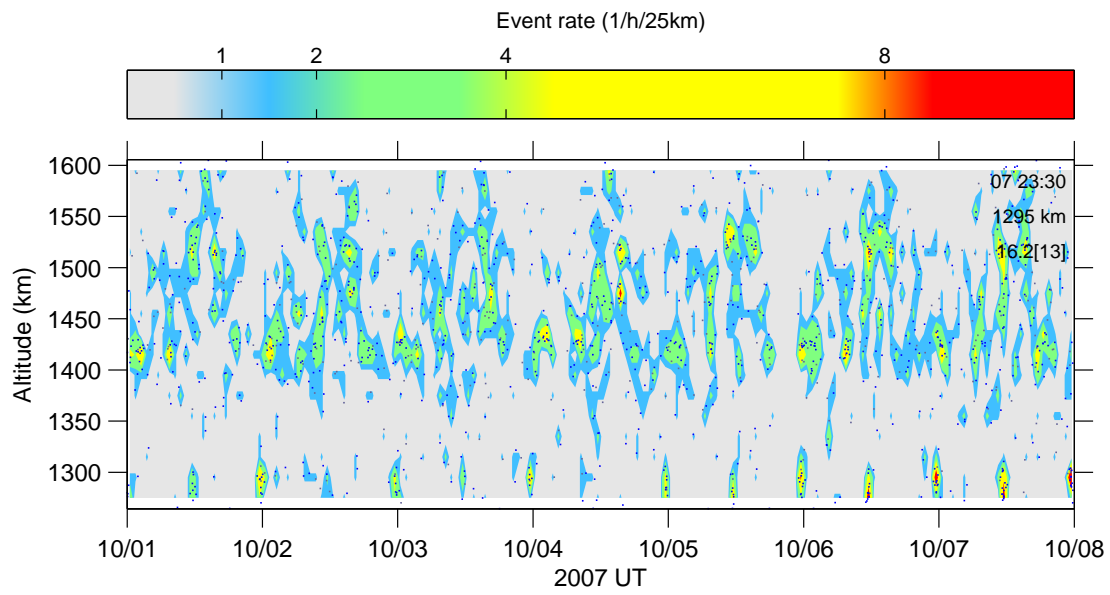


(b) Doppler-velocity v time.

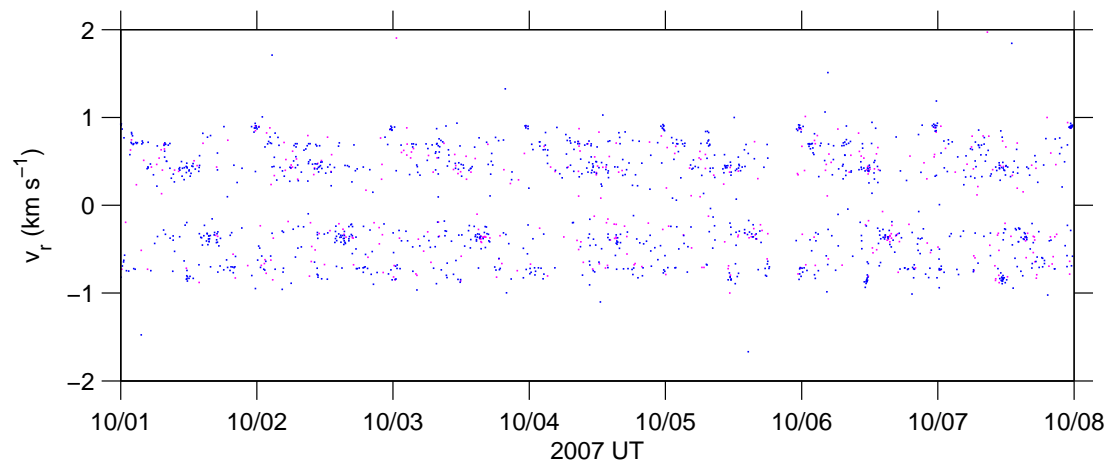


(c) Radar cross section v time.

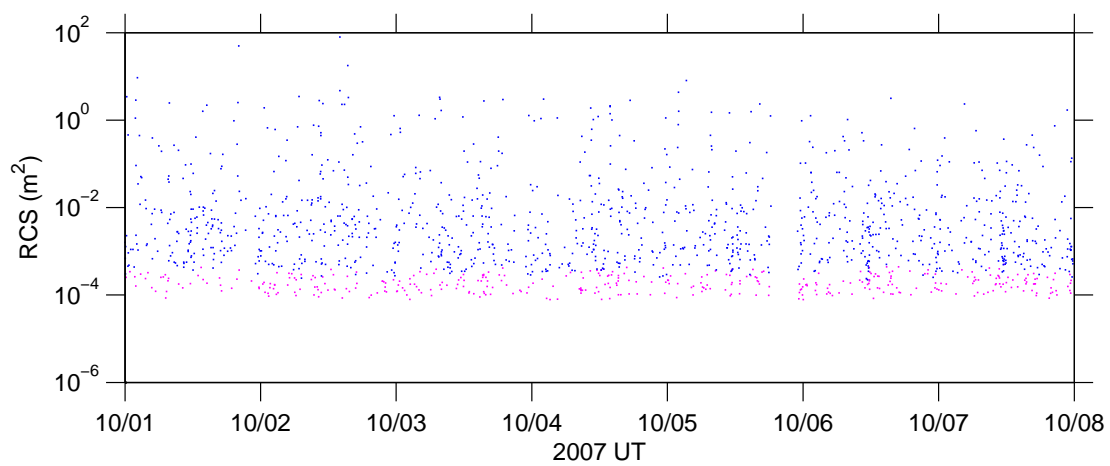
Figure 3: **Zone 2**. Altitude, Doppler-velocity, and radar cross section, v time.



(a) Altitude v time (dots), event rate (contours).



(b) Doppler-velocity v time.



(c) Radar cross section v time.

Figure 4: **Zone 3**. Altitude, Doppler-velocity, and radar cross section v time.

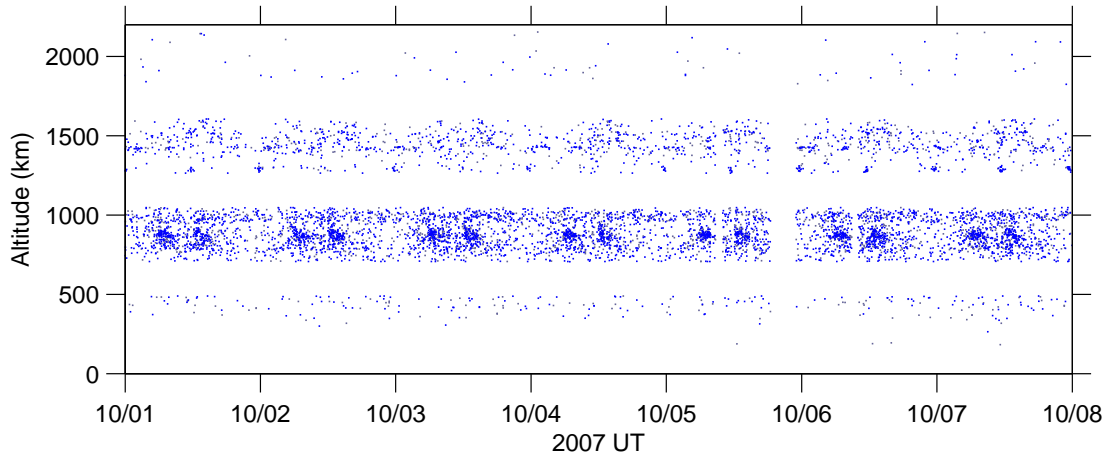


Figure 5: **Altitude v time, 01 Oct–07 Oct 2007.**

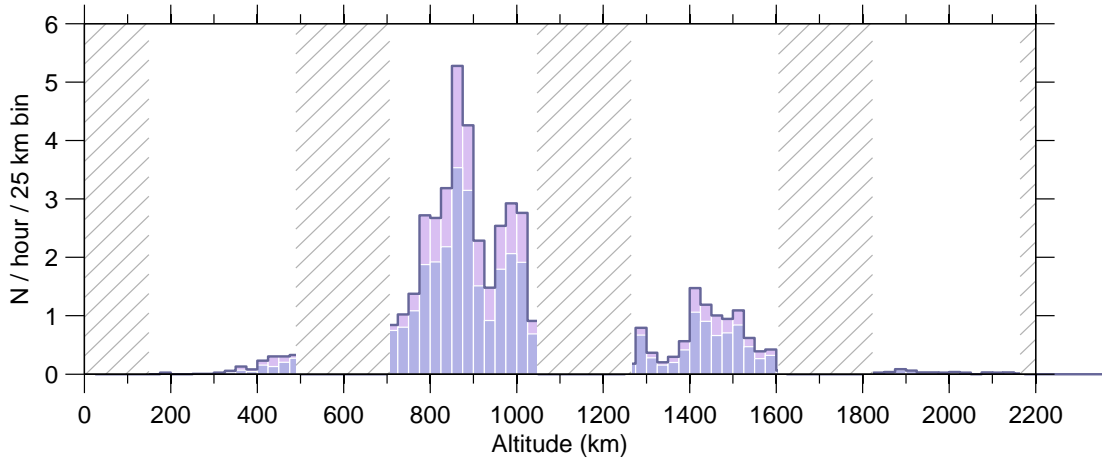


Figure 6: **Event rate v altitude, 01 Oct–07 Oct 2007.**

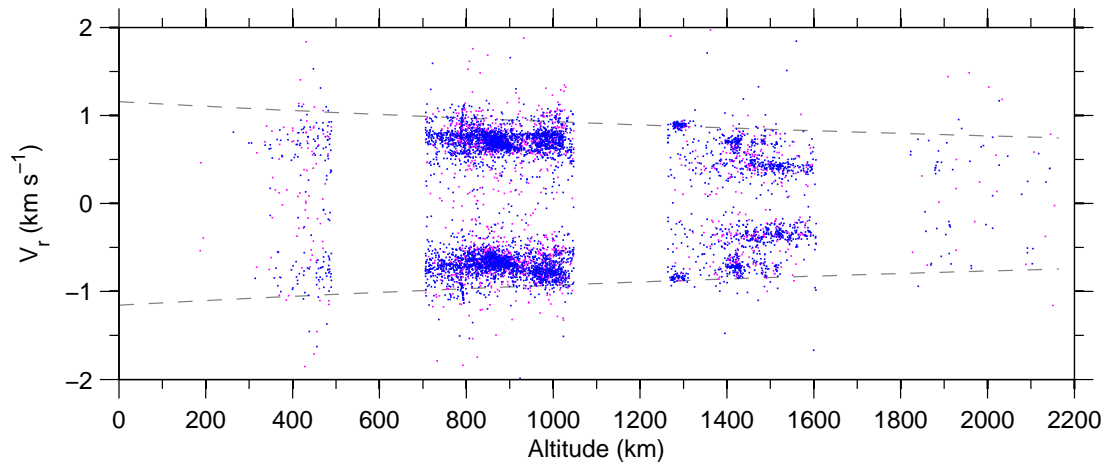


Figure 7: **Doppler-velocity v altitude, 01 Oct–07 Oct 2007.**

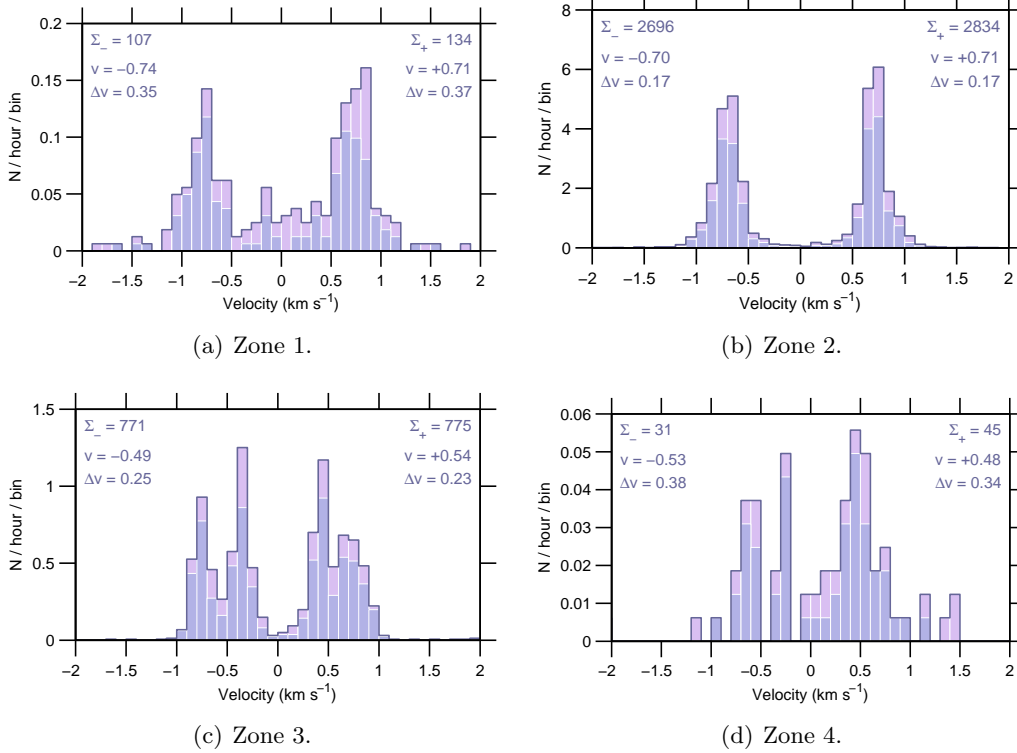


Figure 8: **Event rate v Doppler-velocity**, 01 Oct–07 Oct 2007.

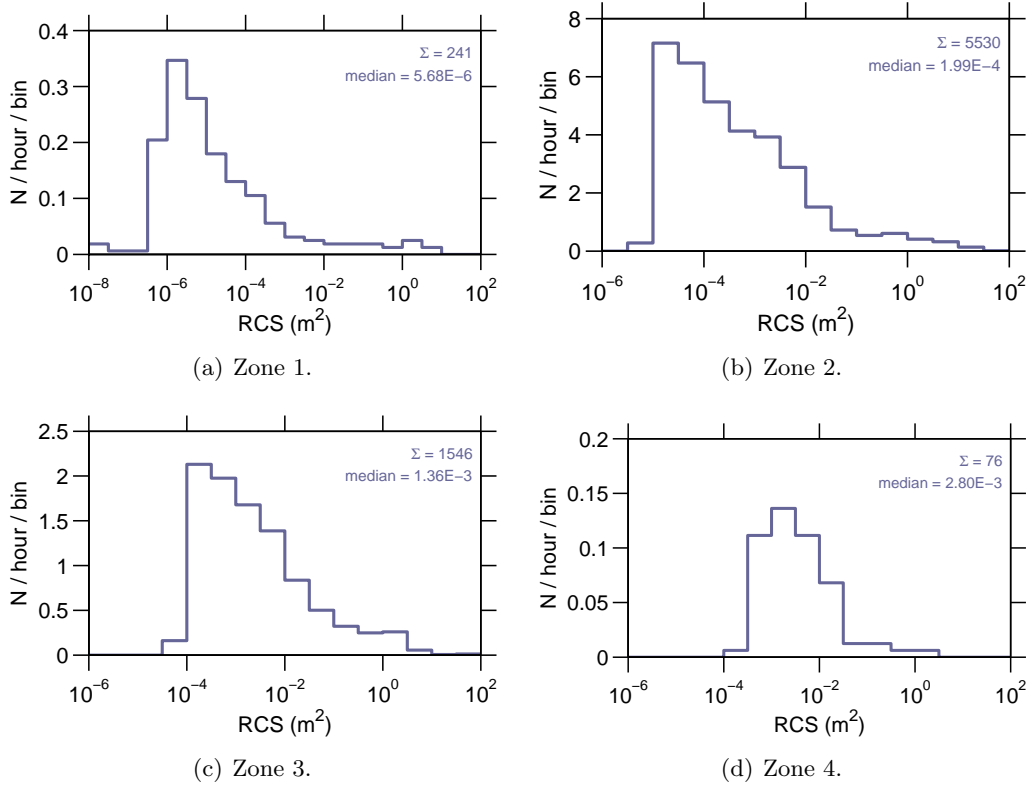


Figure 9: **Event rate v radar cross section**, 01 Oct–07 Oct 2007.