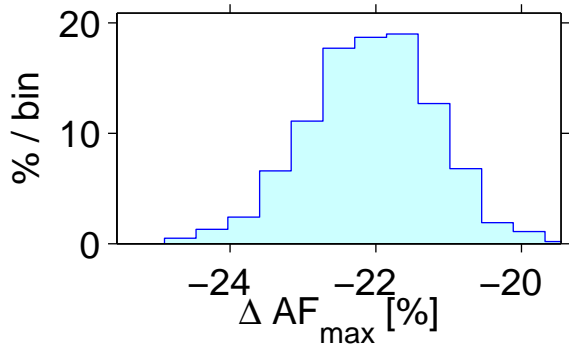
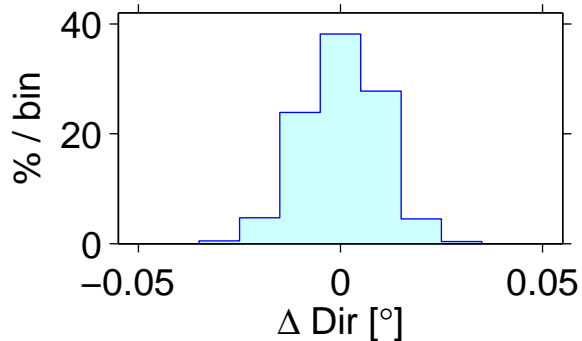


Mx=50 My=20 d/λ=1.50 Steering δ=90.0° Dir=9.59° BW=0.69°  
Δt=500 ps Δφ=40.5° ΔA=0.0% N=1000  
ΔAF=-22.1%±0.9 ΔDir=0.000°±0.010 ΔBW=-0.000°±0.004

**Beam amplitude jitter**



**Beam direction jitter**



**Beam width jitter**

