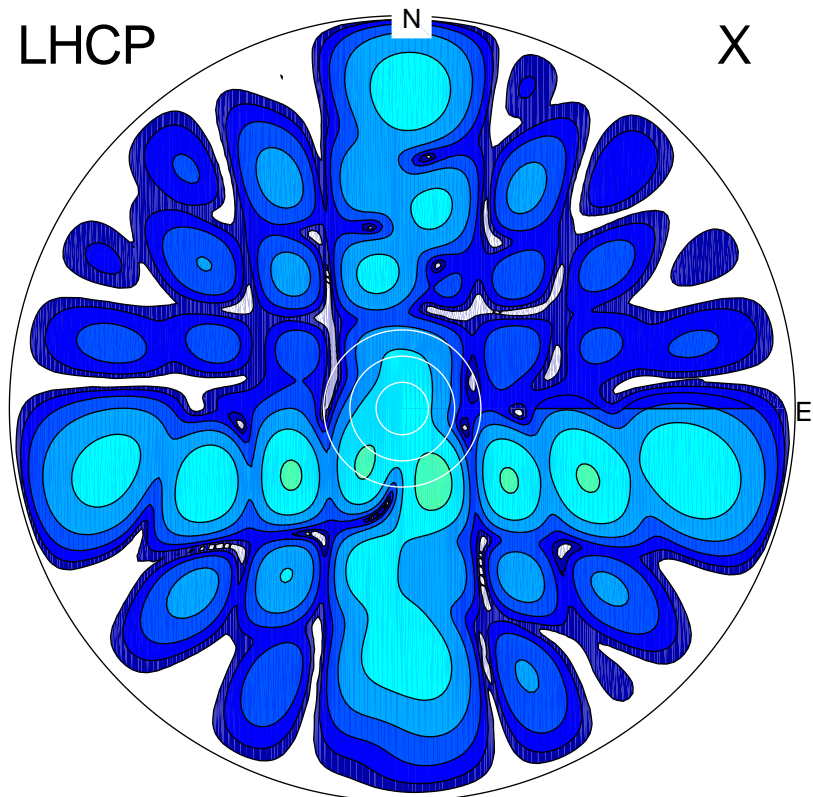
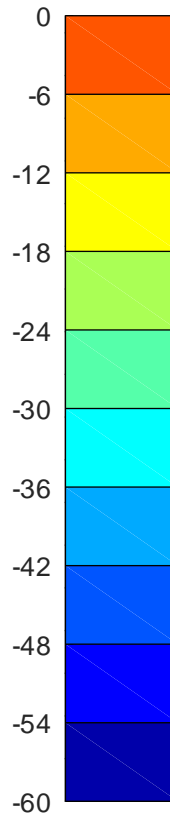


2020-10-25 10:02:05 A2 4.04000000 MHz 899.0 kW

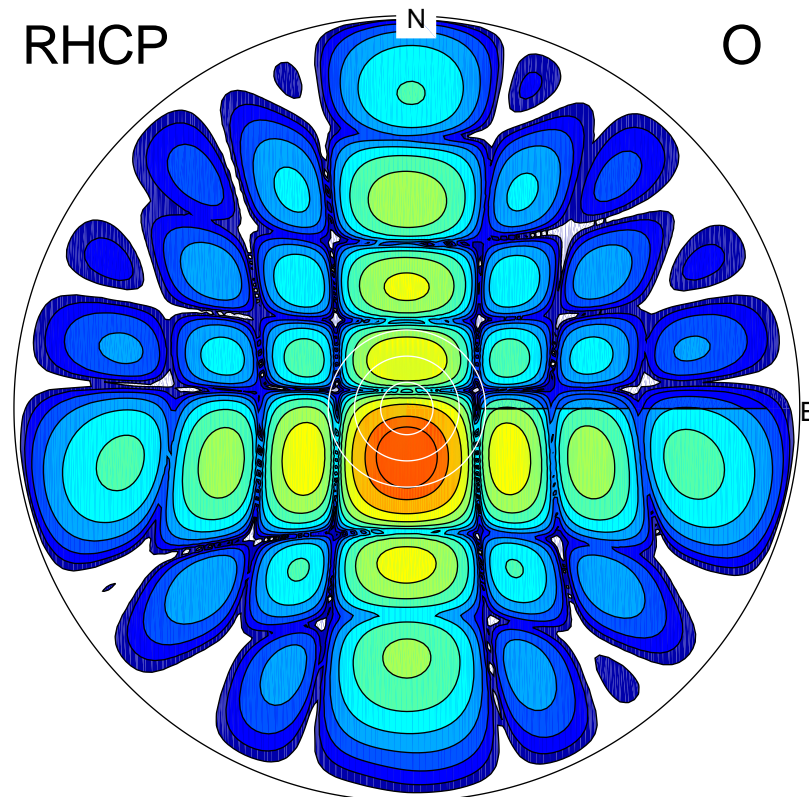
LHCP



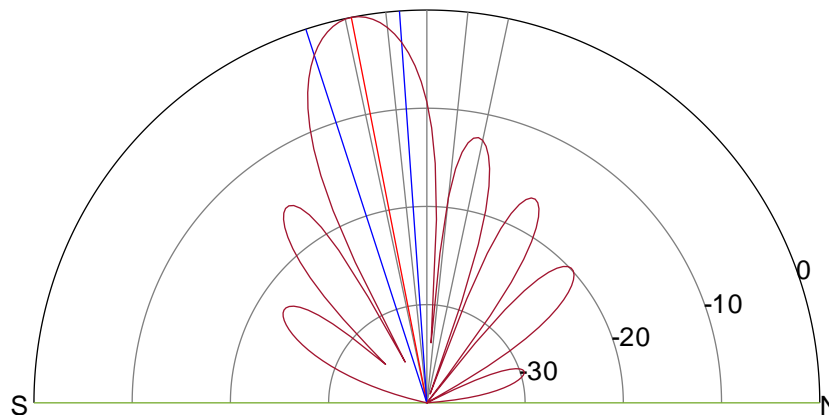
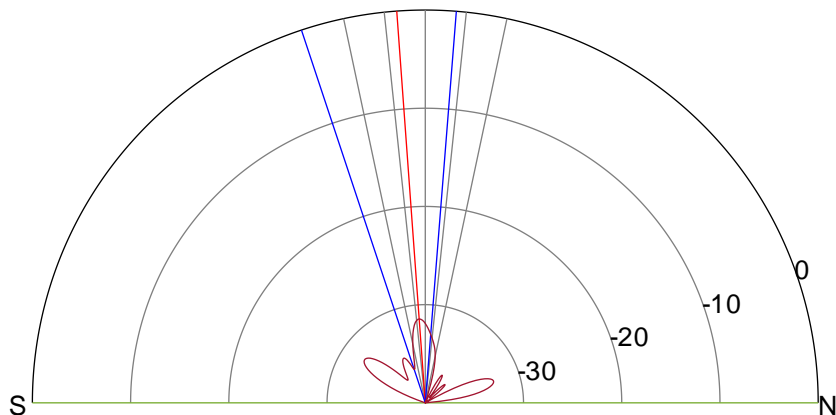
X



RHCP



O



ERP 0.3 MW

Peak gain -5.0 dBi at Az 157 Zen 18
RHCP gain 17.7 dBi
N-S peak -9.0 dBi at Zen -4.2
N-S -3 dB beamwidth 22.9 deg.

ERP 157.3 MW

Peak gain 22.4 dBi at Az 180 Zen 11
LHCP gain -10.9 dBi
N-S peak 22.4 dBi at Zen -11.1
N-S -3 dB beamwidth 13.9 deg.