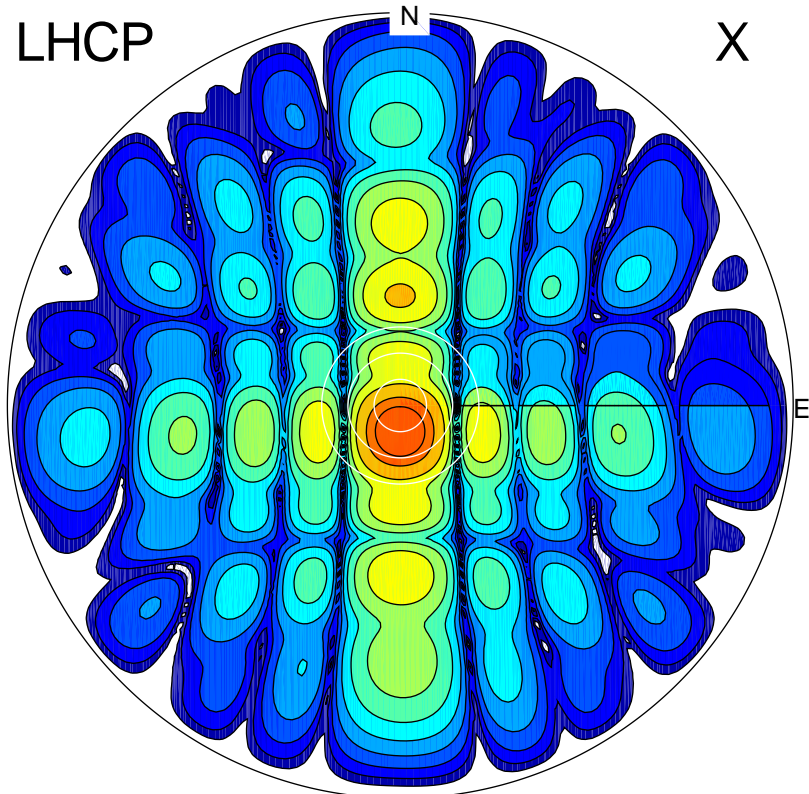
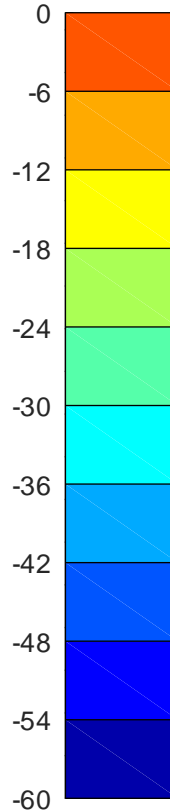


2020-09-15 10:01:27 A2 5.000000000 MHz 782.0 kW

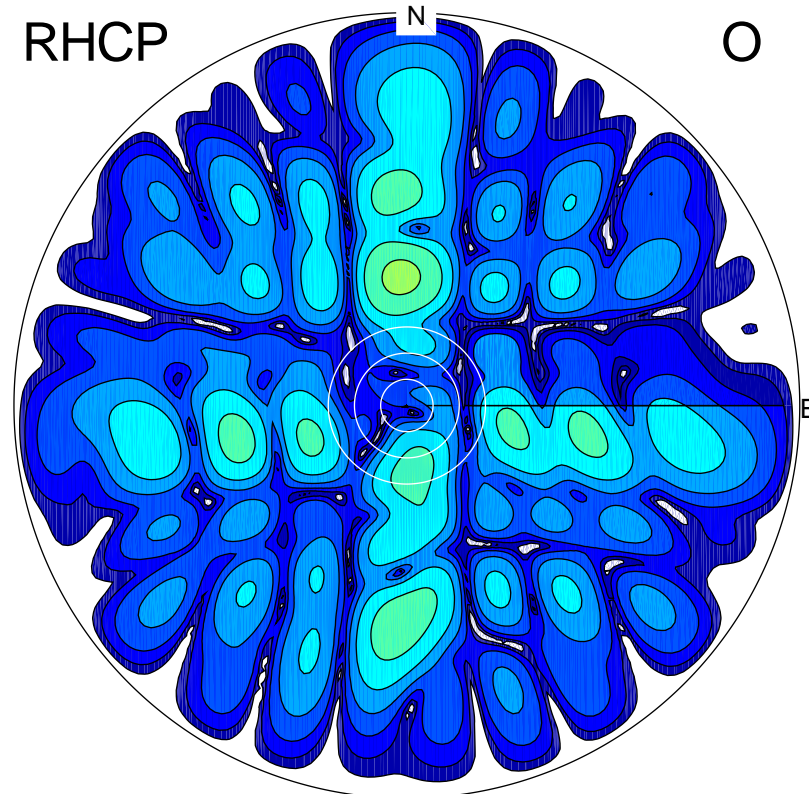
LHCP



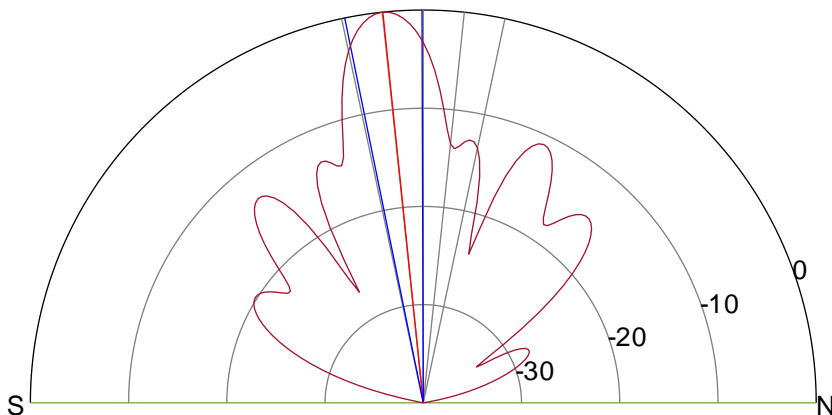
X



RHCP

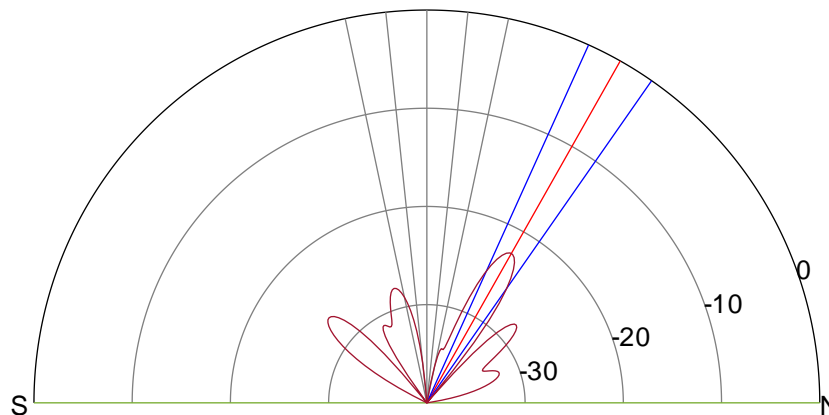


O



ERP 175.4 MW

Peak gain 23.5 dBi at Az 182 Zen 6
RHCP gain -12.6 dBi
N-S peak 23.5 dBi at Zen -5.9
N-S -3 dB beamwidth 11.3 deg.



ERP 1.0 MW

Peak gain 1.1 dBi at Az 357 Zen 30
LHCP gain 9.4 dBi
N-S peak 1.0 dBi at Zen 29.5
N-S -3 dB beamwidth 10.6 deg.