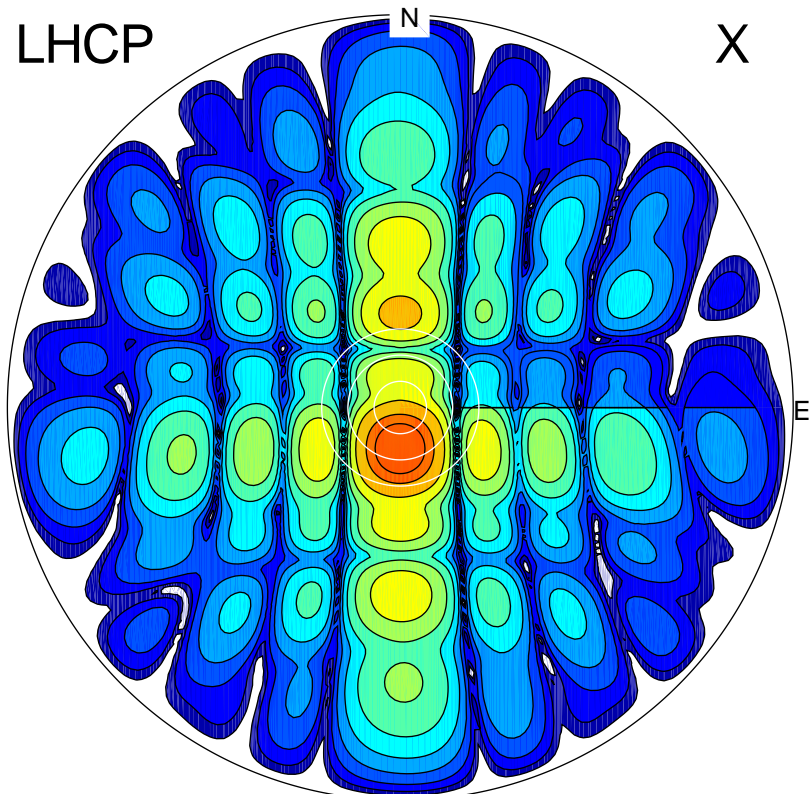
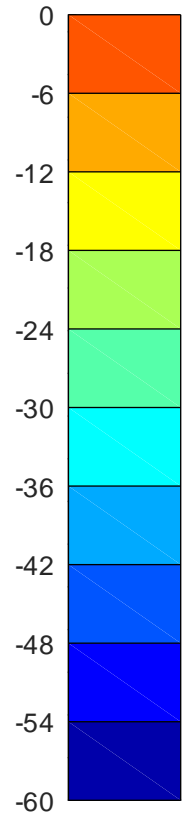


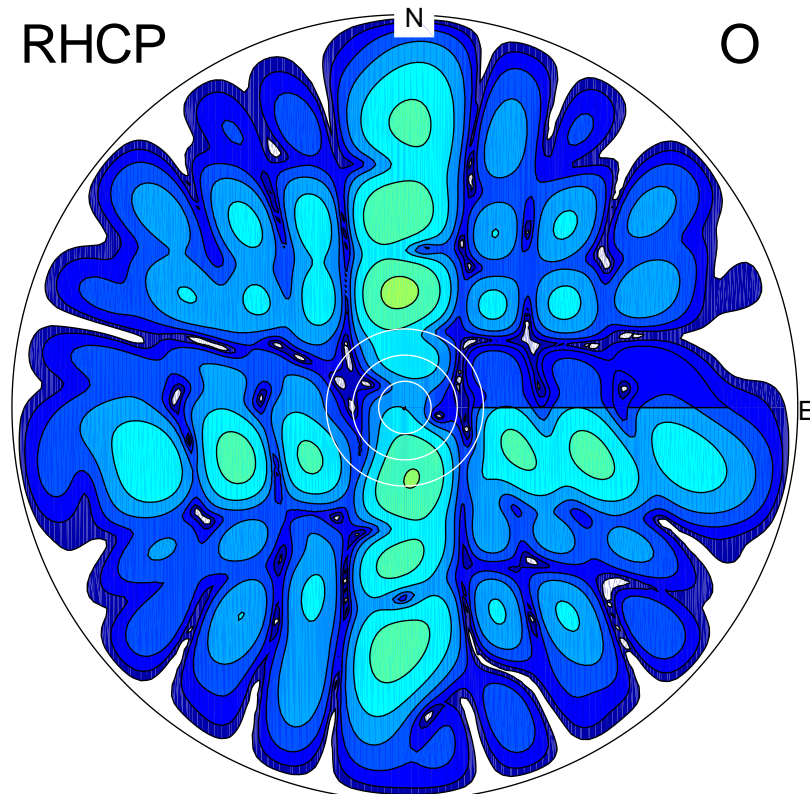
LHCP



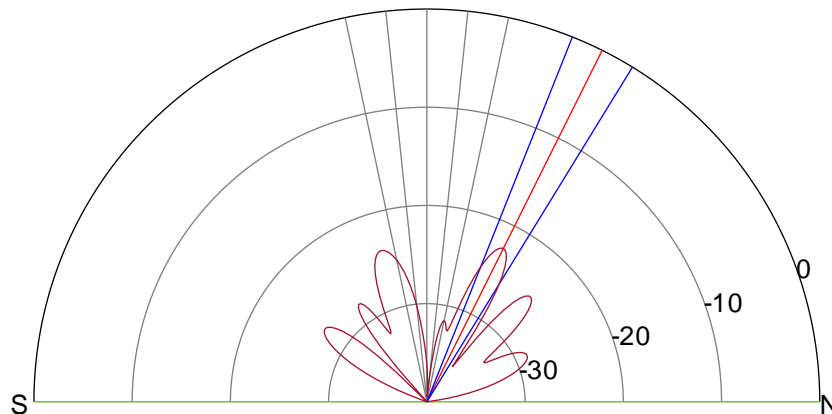
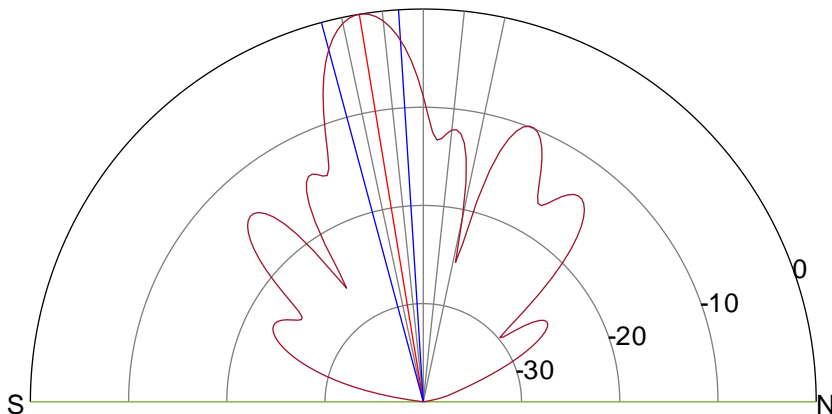
X



RHCP



O



ERP 172.3 MW

Peak gain 23.4 dBi at Az 182 Zen 9
RHCP gain -4.0 dBi
N-S peak 23.4 dBi at Zen -9.4
N-S -3 dB beamwidth 11.4 deg.

ERP 1.0 MW

Peak gain 1.0 dBi at Az 357 Zen 26
LHCP gain 10.8 dBi
N-S peak 0.9 dBi at Zen 26.5
N-S -3 dB beamwidth 9.8 deg.