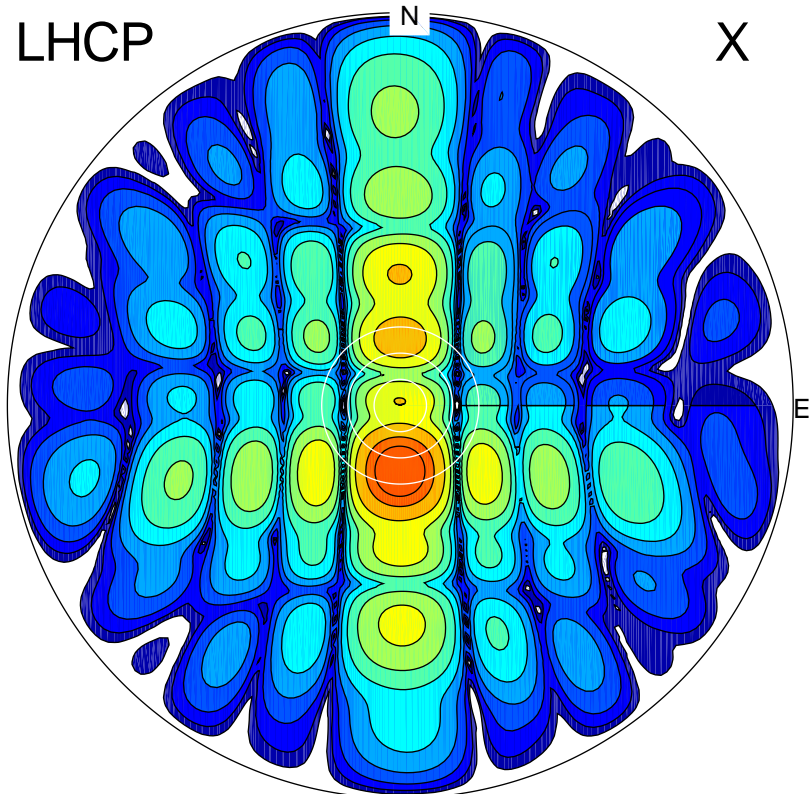
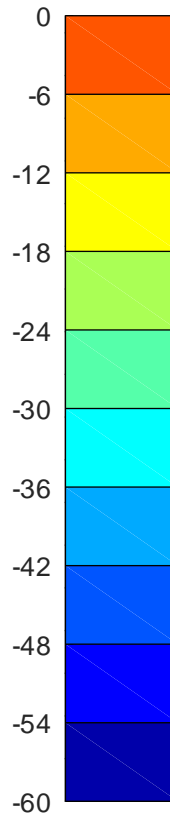


2020-09-15 09:43:30 A2 5.00000000 MHz 777.0 kW

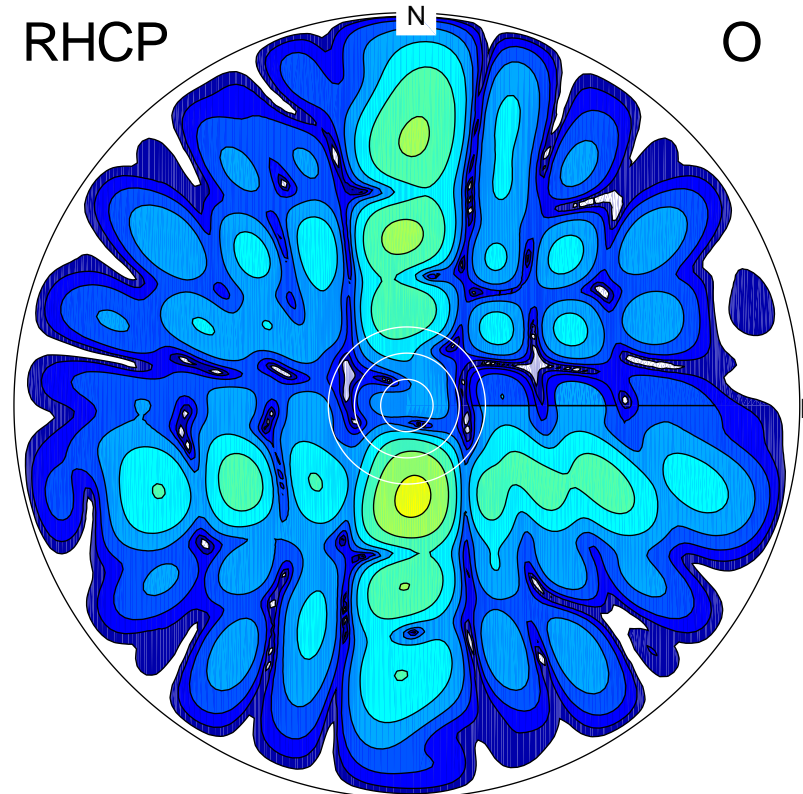
LHCP



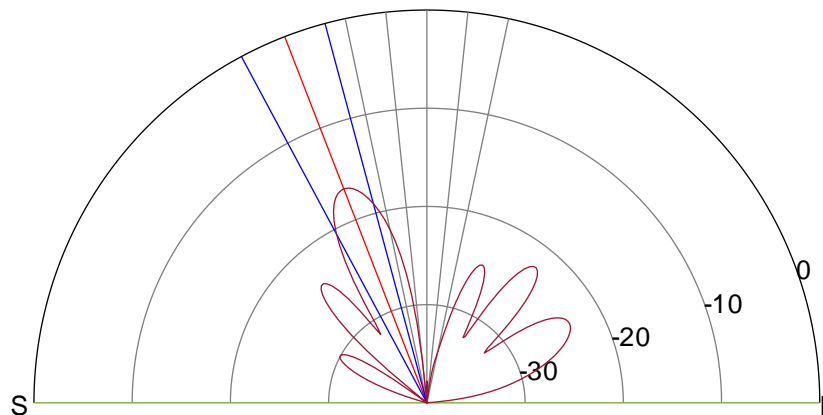
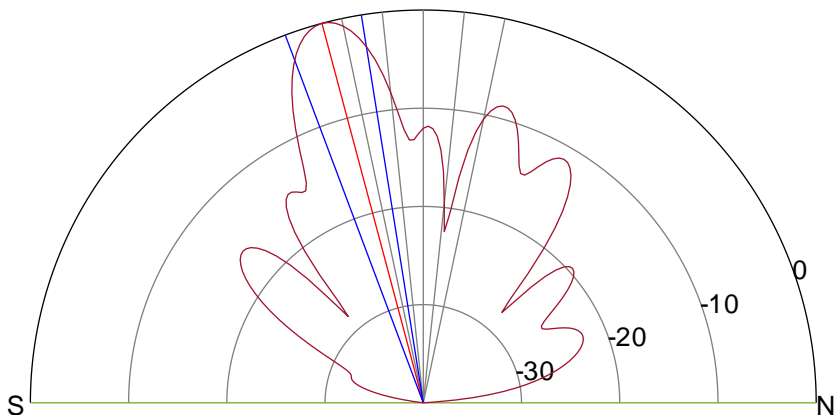
X



RHCP



O



ERP 160.8 MW

Peak gain 23.2 dBi at Az 180 Zen 15

RHCP gain 4.1 dBi

N-S peak 23.2 dBi at Zen -14.9

N-S -3 dB beamwidth 11.5 deg.

ERP 3.7 MW

Peak gain 6.7 dBi at Az 176 Zen 21

LHCP gain 19.8 dBi

N-S peak 6.5 dBi at Zen -21.2

N-S -3 dB beamwidth 13.1 deg.