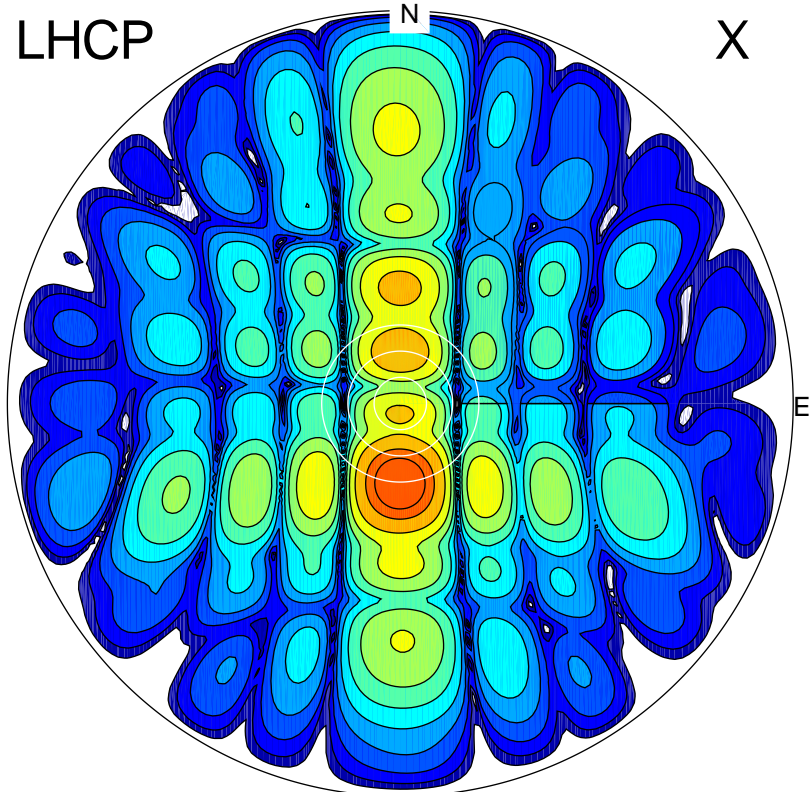
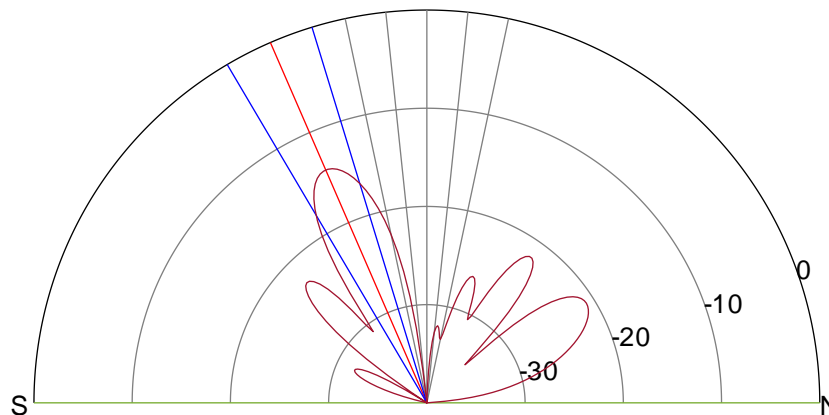
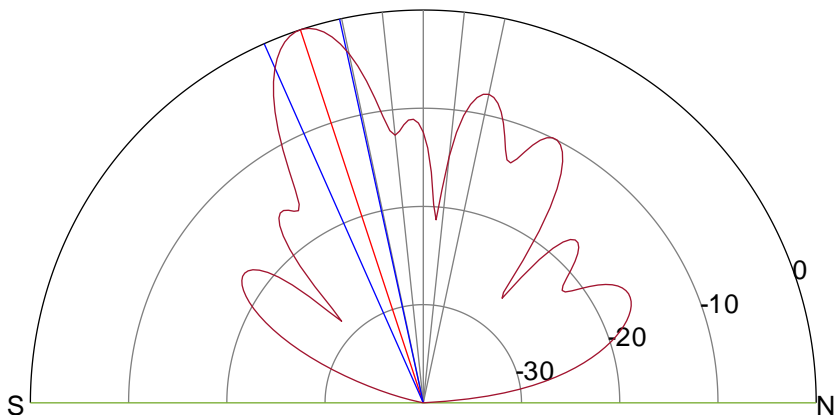
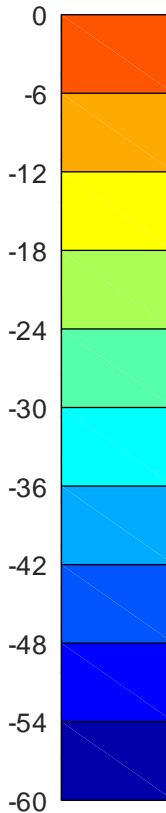
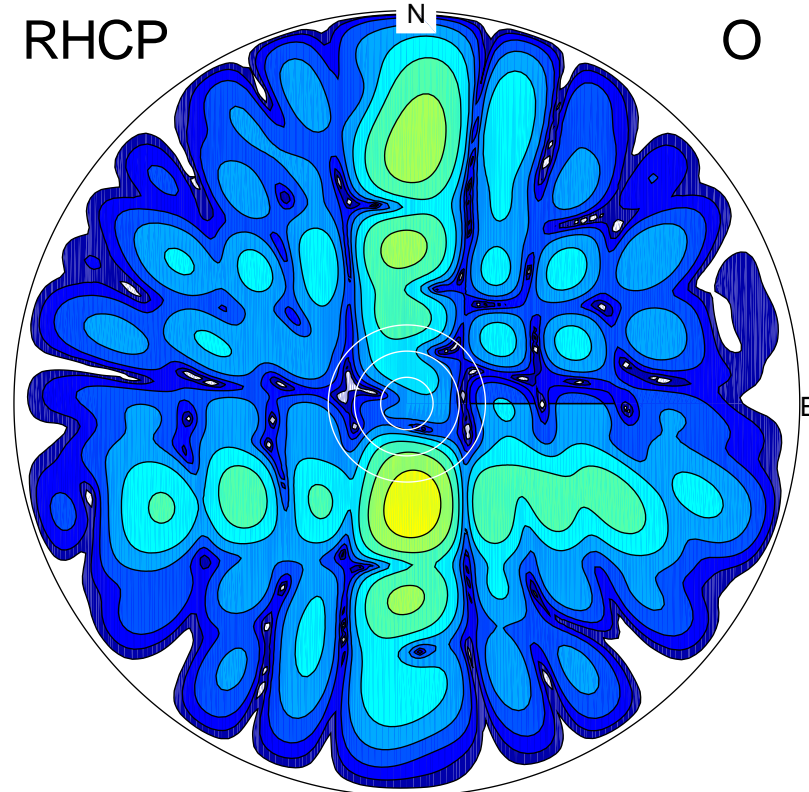


2020-09-15 09:20:07 A2 5.00000000 MHz 781.0 kW

LHCP



RHCP



ERP 149.9 MW

Peak gain 22.8 dBi at Az 180 Zen 18

RHCP gain 6.9 dBi

N-S peak 22.8 dBi at Zen -18.2

N-S -3 dB beamwidth 11.6 deg.

ERP 6.0 MW

Peak gain 8.9 dBi at Az 176 Zen 23

LHCP gain 20.7 dBi

N-S peak 8.7 dBi at Zen -23.5

N-S -3 dB beamwidth 13.5 deg.