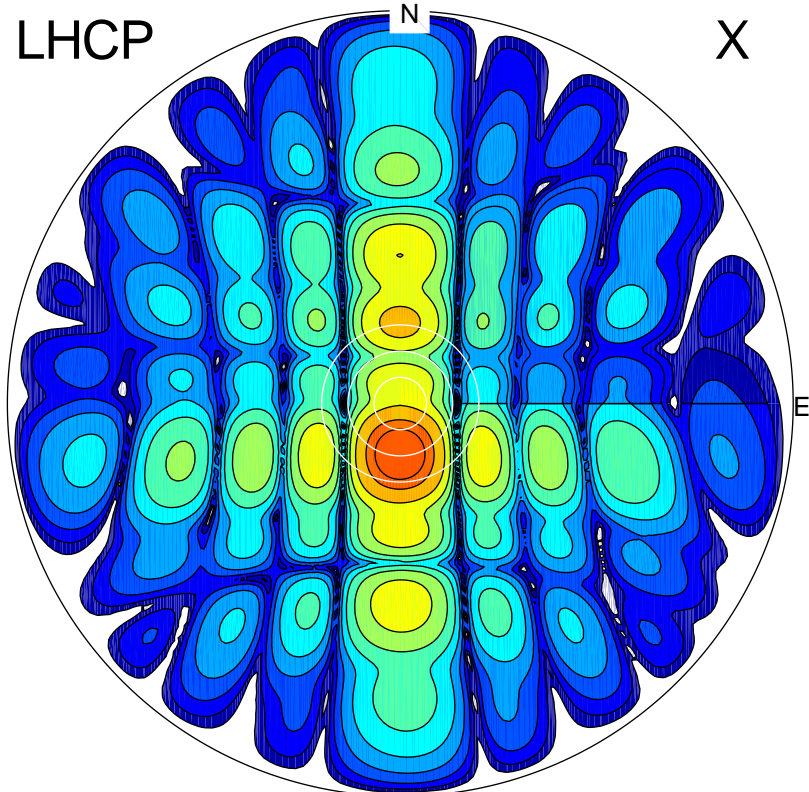
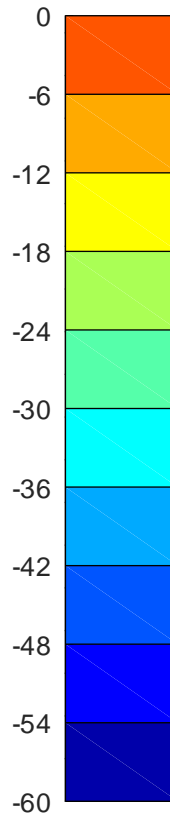


2020-09-15 09:03:29 A2 5.00000000 MHz 789.0 kW

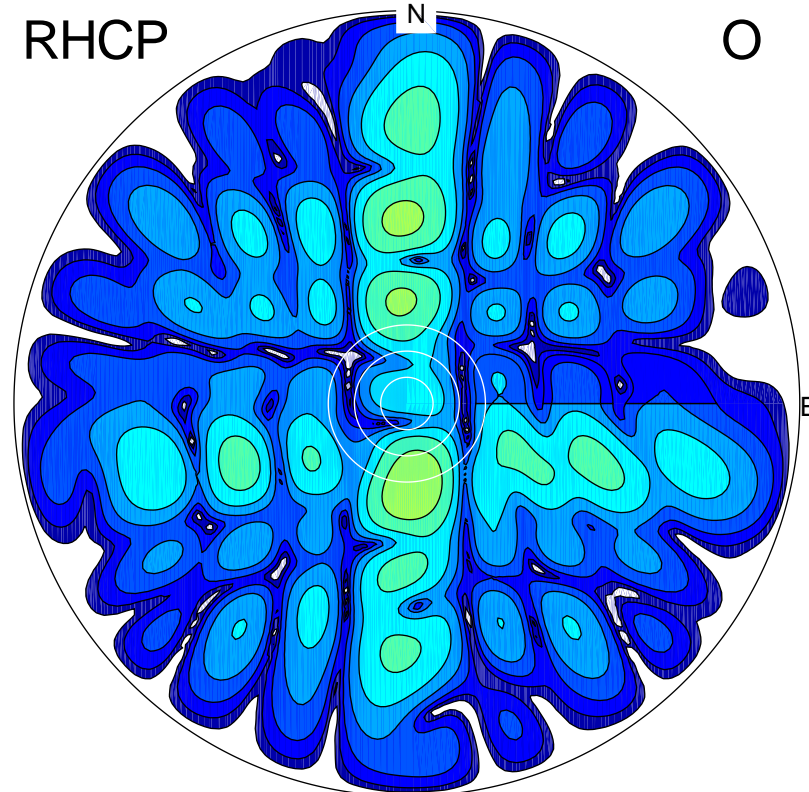
LHCP



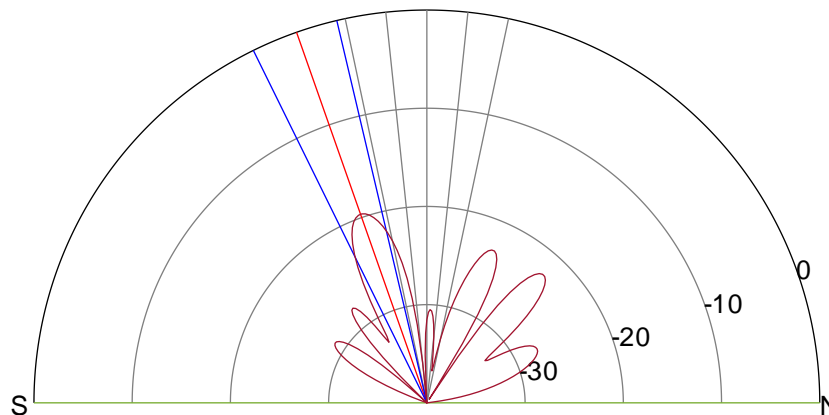
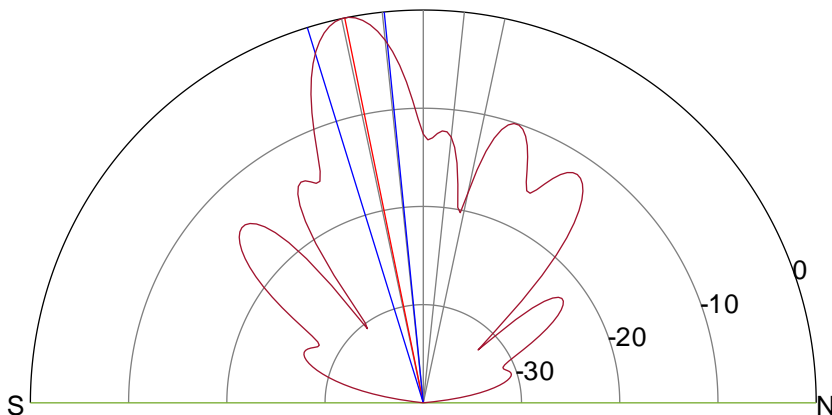
X



RHCP



O



ERP 169.5 MW

Peak gain 23.3 dBi at Az 181 Zen 12
RHCP gain 0.1 dBi
N-S peak 23.3 dBi at Zen -11.5
N-S -3 dB beamwidth 11.5 deg.

ERP 1.9 MW

Peak gain 3.9 dBi at Az 175 Zen 19
LHCP gain 18.2 dBi
N-S peak 3.7 dBi at Zen -19.4
N-S -3 dB beamwidth 13.0 deg.