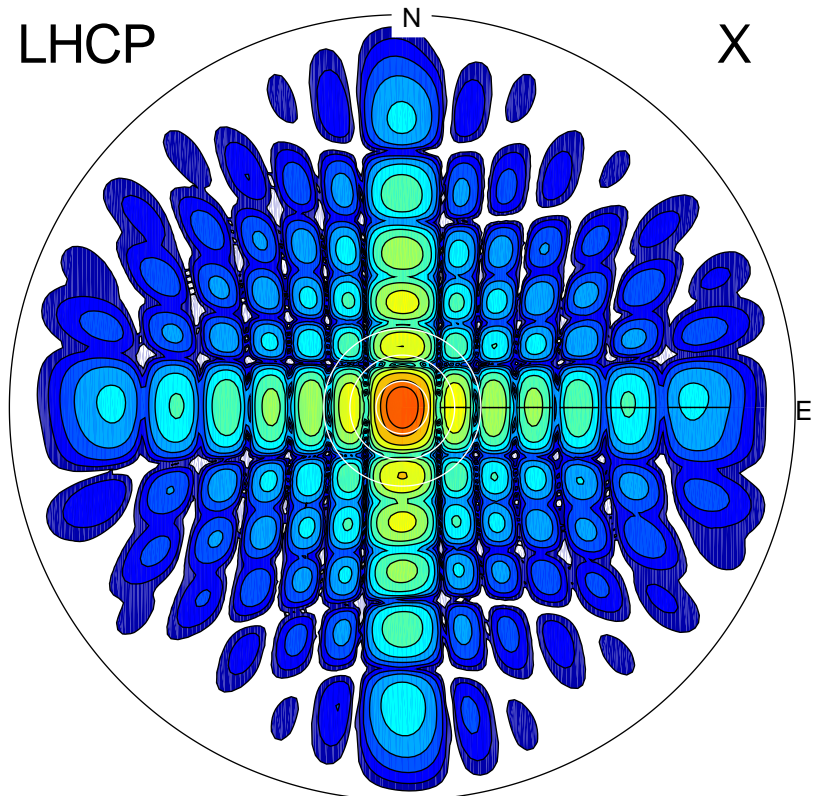
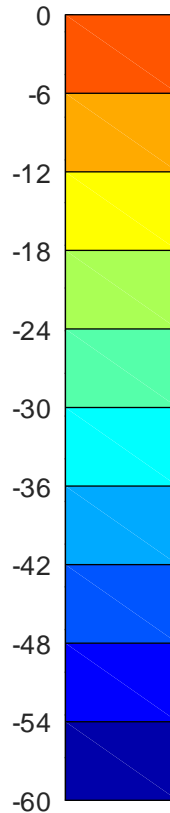


2020-08-07 01:07:13 A1 5.42300000 MHz 898.0 kW

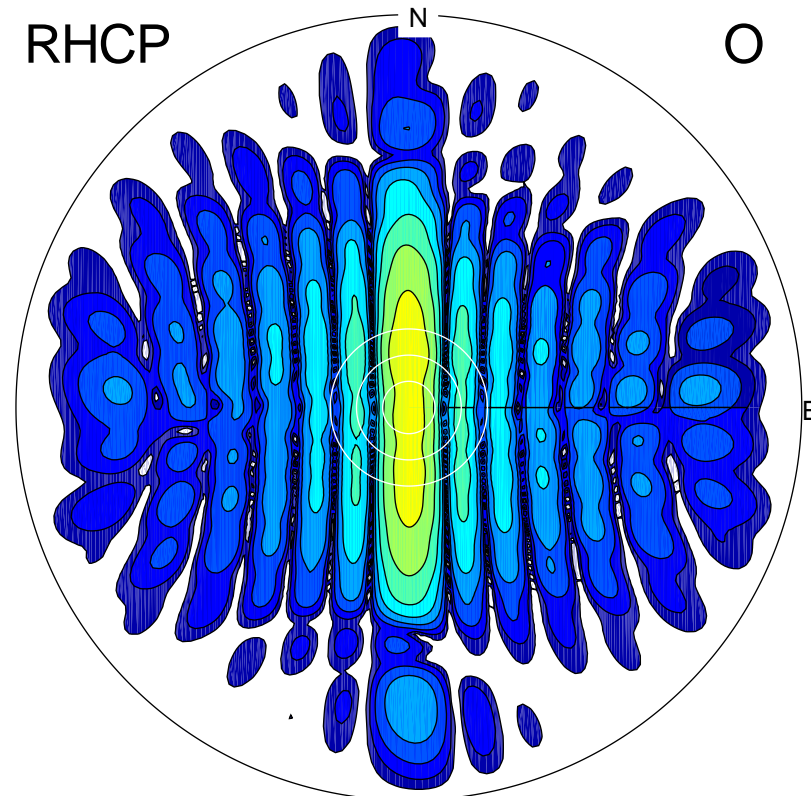
LHCP



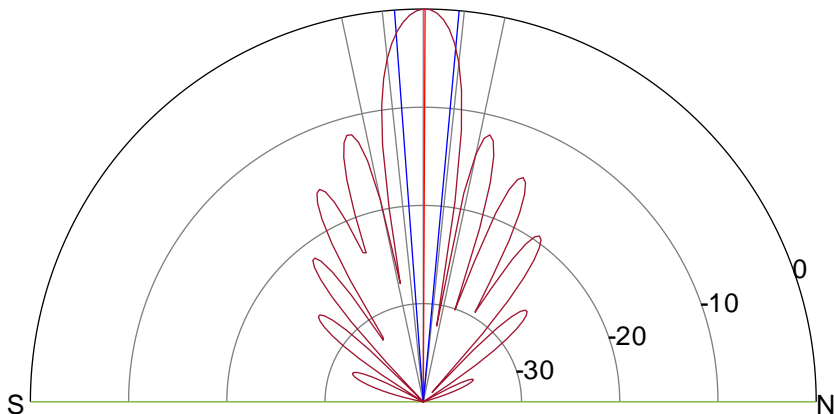
X



RHCP



O



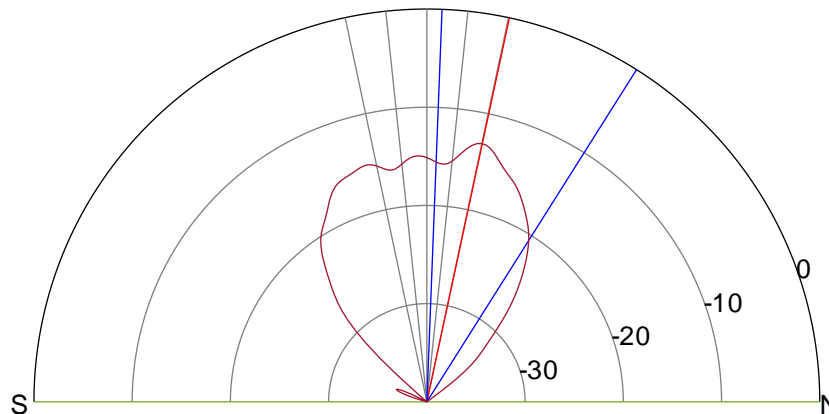
**ERP 359.0 MW**

Peak gain 26.0 dBi at Az 68 Zen 0

RHCP gain 10.9 dBi

N-S peak 26.0 dBi at Zen 0.3

N-S -3 dB beamwidth 9.4 deg.



**ERP 17.5 MW**

Peak gain 12.9 dBi at Az 0 Zen 12

LHCP gain 11.8 dBi

N-S peak 12.9 dBi at Zen 12.1

N-S -3 dB beamwidth 30.0 deg.