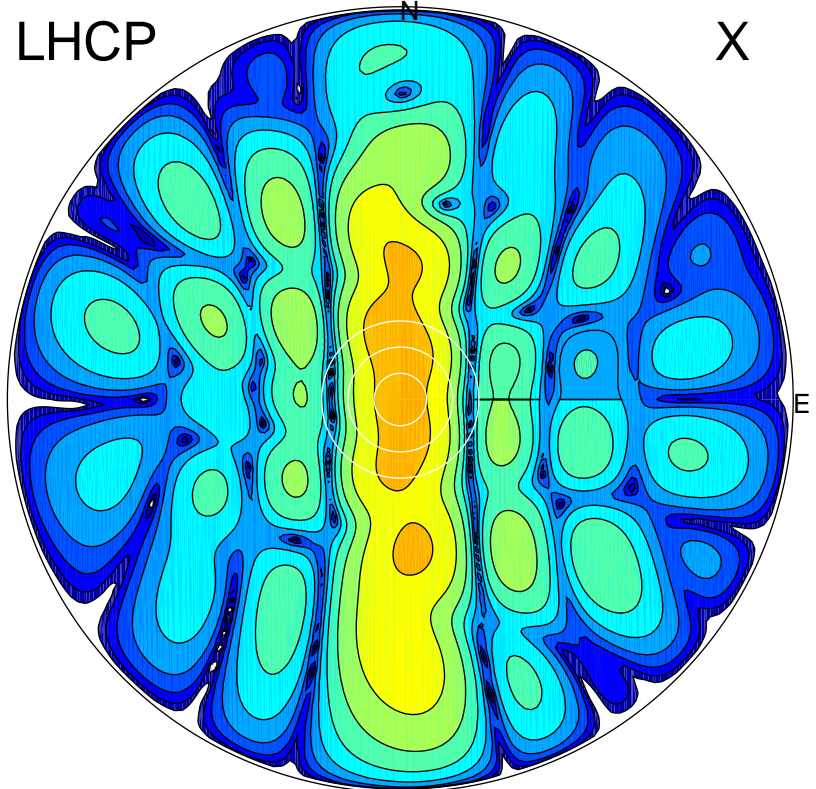


2020-03-23 10:45:11 A2 4.04000000 MHz 231.0 kW

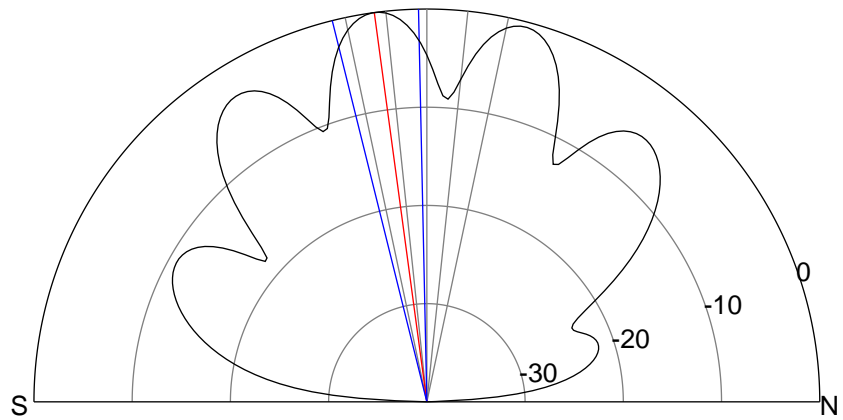
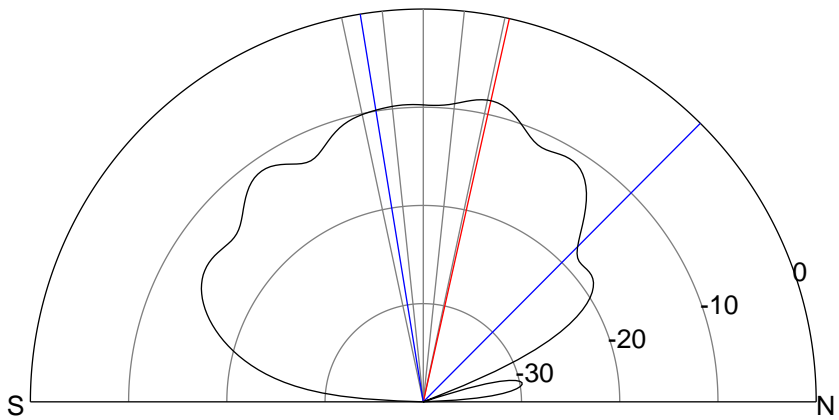
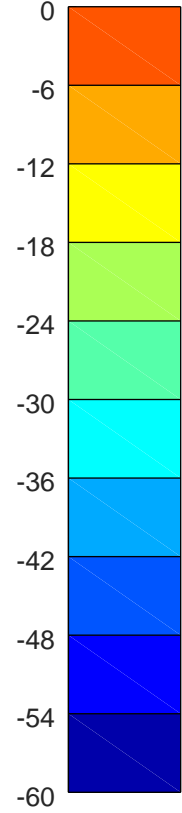
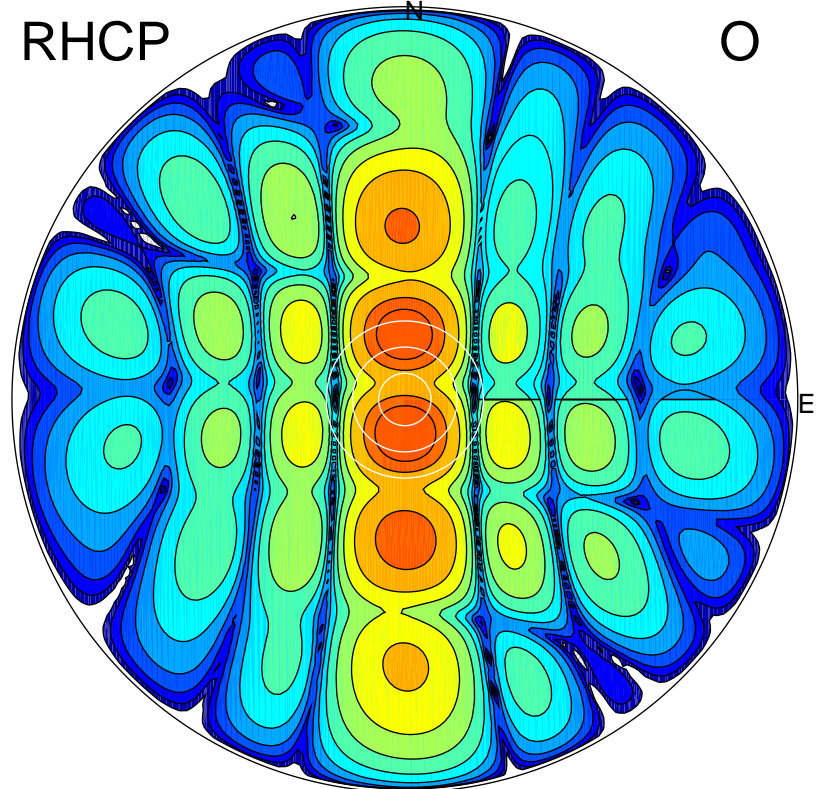
LHCP

X



RHCP

O



ERP 1.9 MW

Peak gain 9.1 dBi at Az 357 Zen 13
RHCP gain 16.8 dBi
N-S peak 9.0 dBi at Zen 12.7
N-S -3 dB beamwidth 54.1 deg.

ERP 13.3 MW

Peak gain 17.6 dBi at Az 180 Zen 8
LHCP gain 7.8 dBi
N-S peak 17.6 dBi at Zen -7.7
N-S -3 dB beamwidth 12.7 deg.