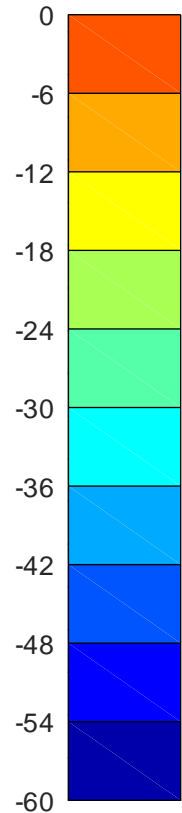
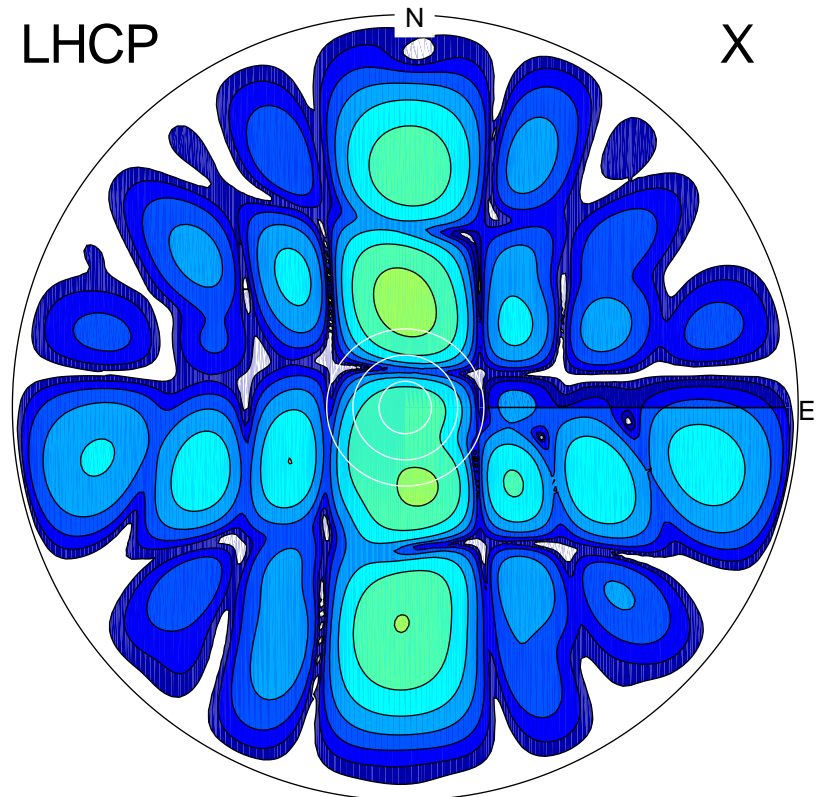


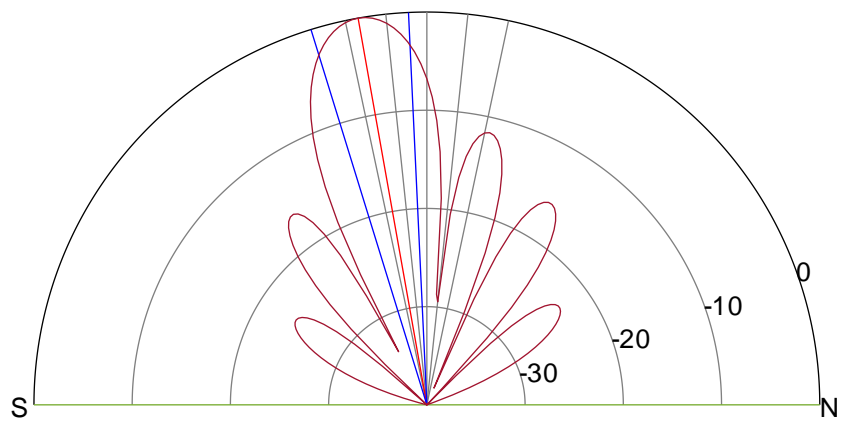
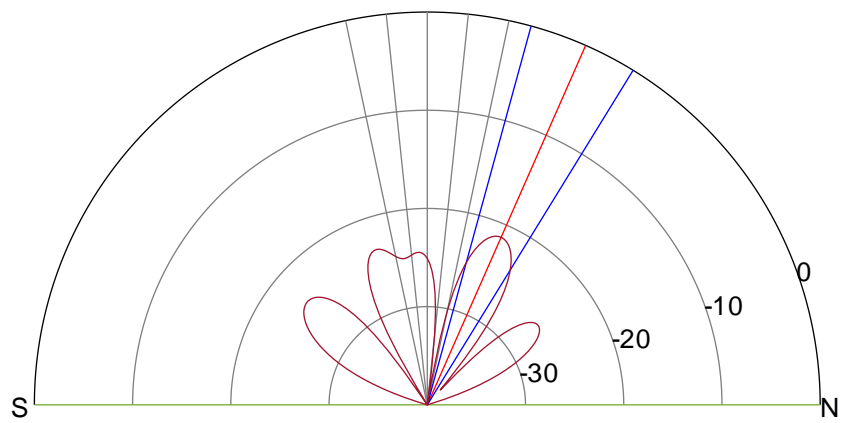
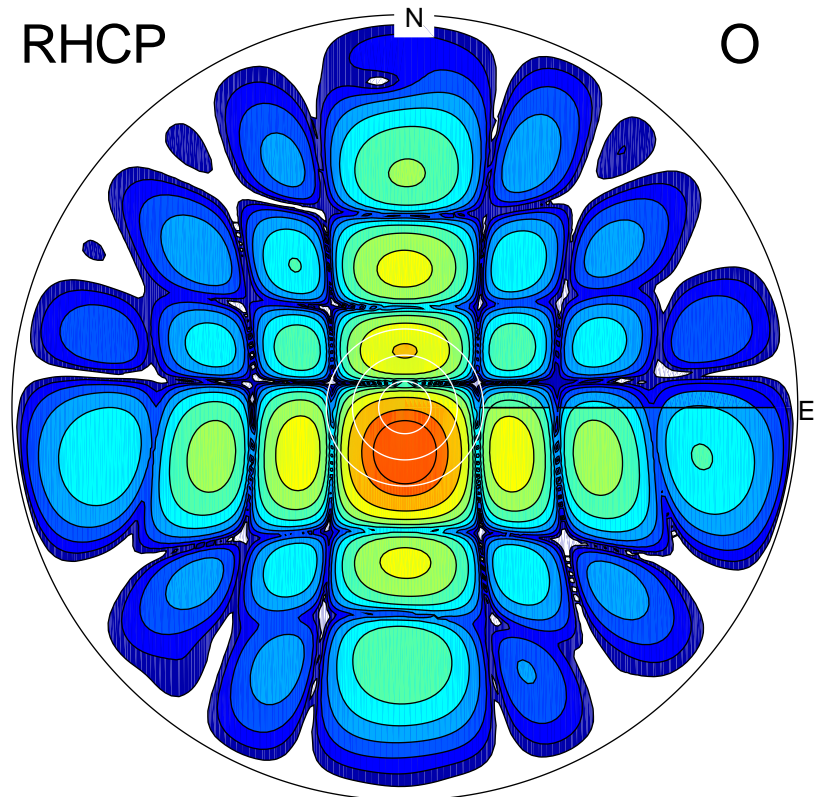
LHCP

X



RHCP

O



ERP 1.0 MW

Peak gain 0.7 dBi at Az 0 Zen 24
RHCP gain -6.2 dBi
N-S peak 0.7 dBi at Zen 23.8
N-S -3 dB beamwidth 16.3 deg.

ERP 137.7 MW

Peak gain 22.0 dBi at Az 179 Zen 10
LHCP gain -2.9 dBi
N-S peak 22.0 dBi at Zen -10.1
N-S -3 dB beamwidth 14.5 deg.