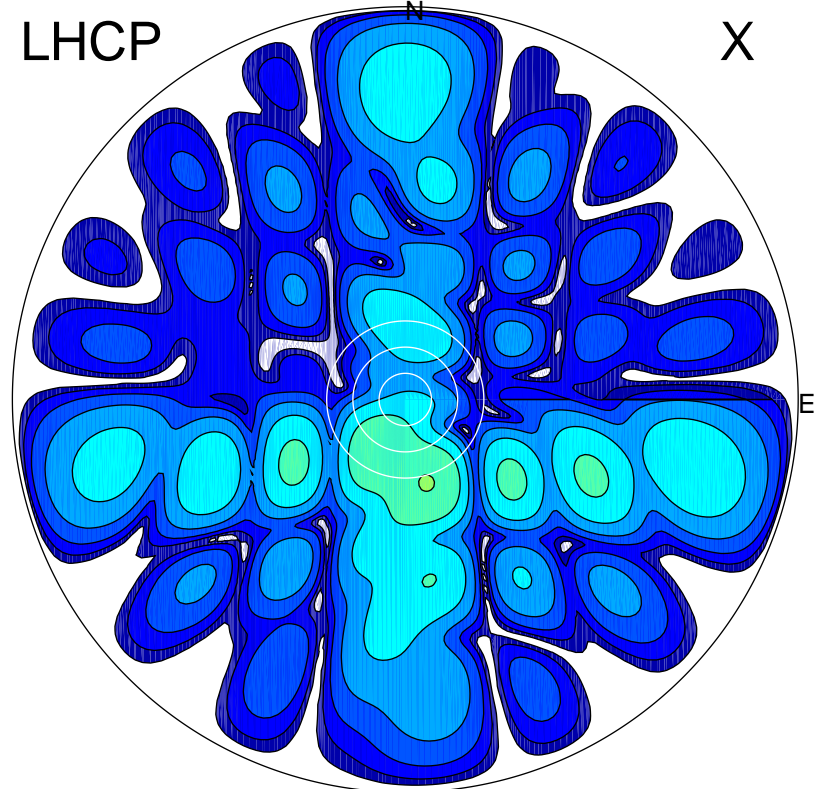


2019-10-18 14:27:00 A2 4.04000000 MHz 900.0 kW

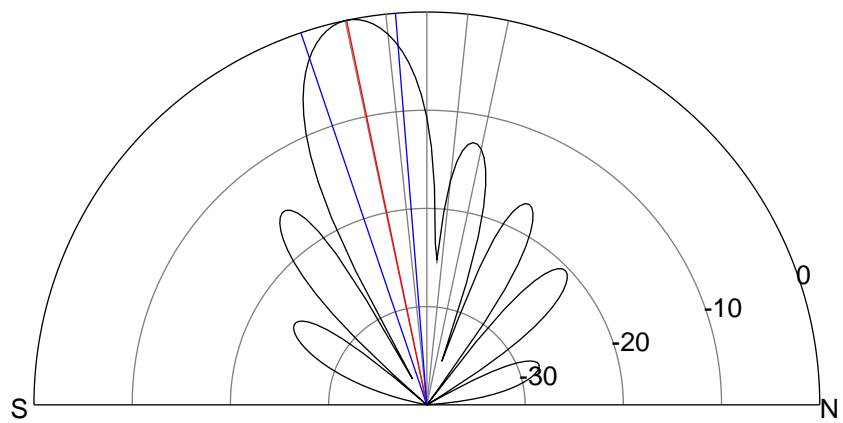
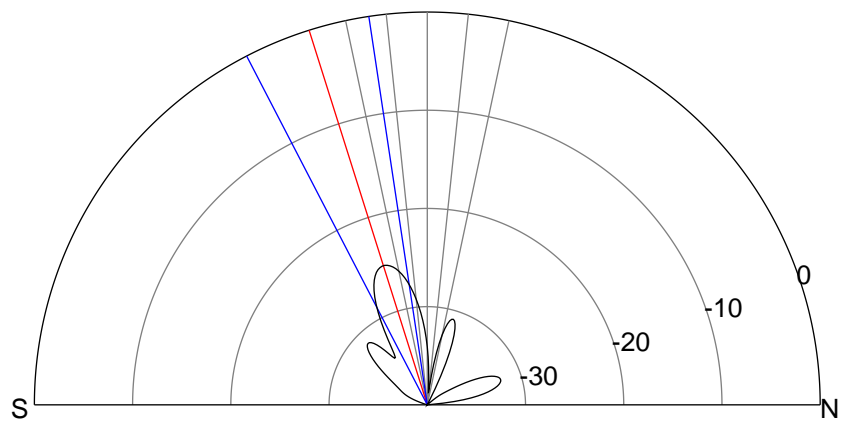
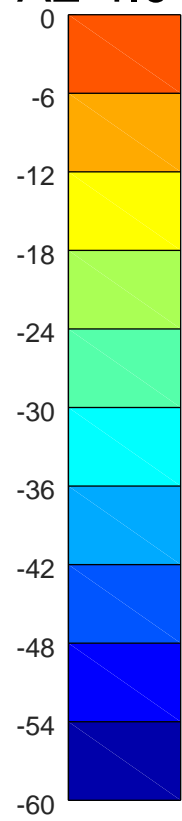
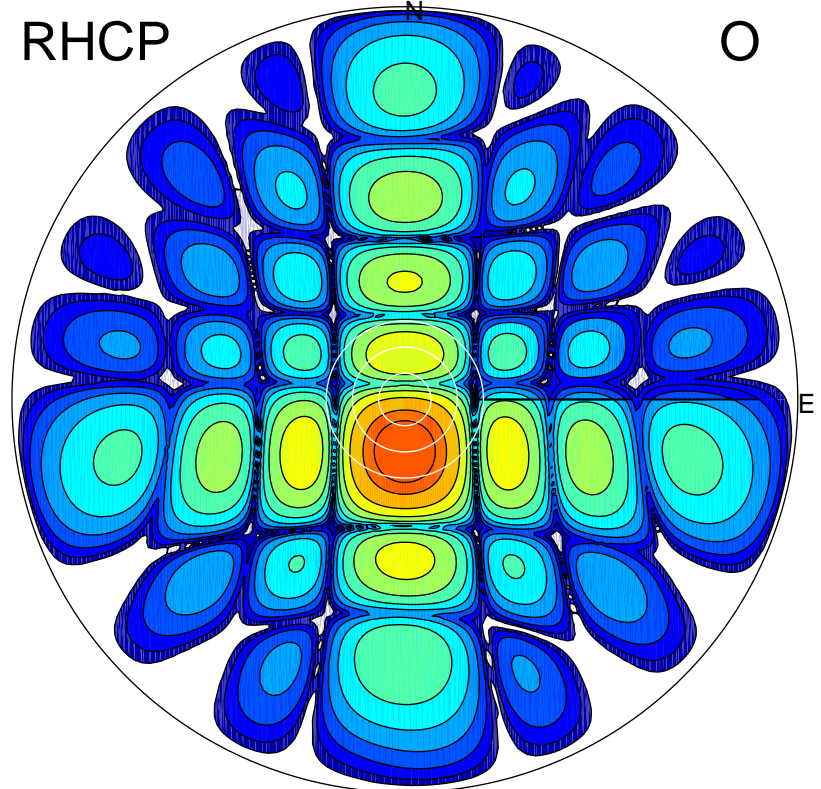
LHCP

X



RHCP

O



### ERP 0.7 MW

Peak gain -1.4 dBi at Az 165 Zen 20  
RHCP gain 17.6 dBi  
N-S peak -2.8 dBi at Zen -17.5  
N-S -3 dB beamwidth 18.8 deg.

### ERP 155.8 MW

Peak gain 22.4 dBi at Az 179 Zen 12  
LHCP gain -3.8 dBi  
N-S peak 22.4 dBi at Zen -11.8  
N-S -3 dB beamwidth 14.1 deg.