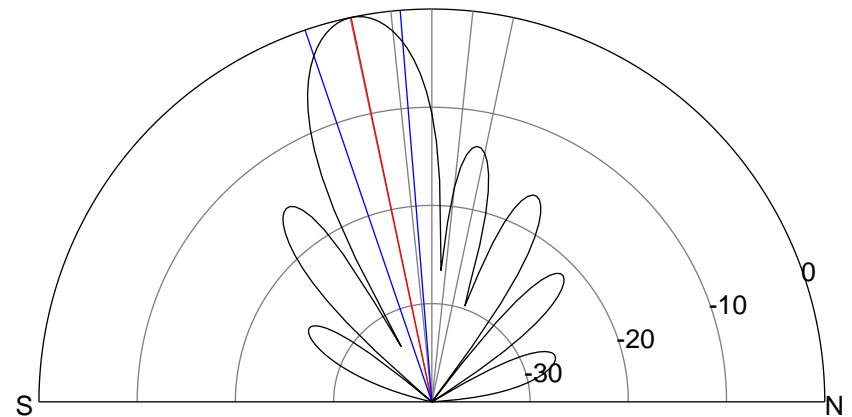
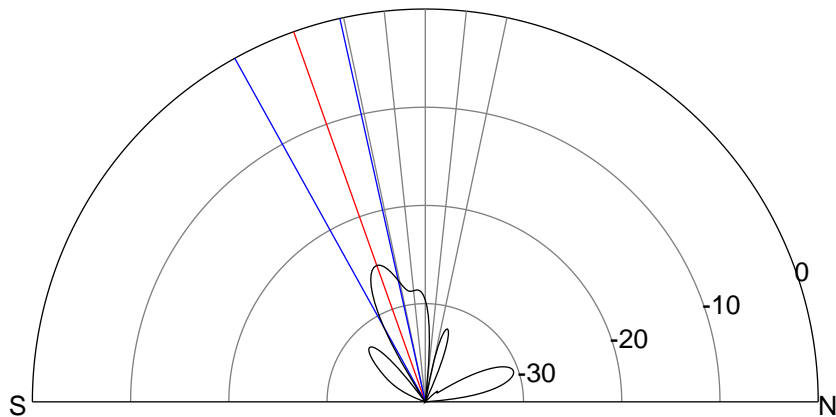
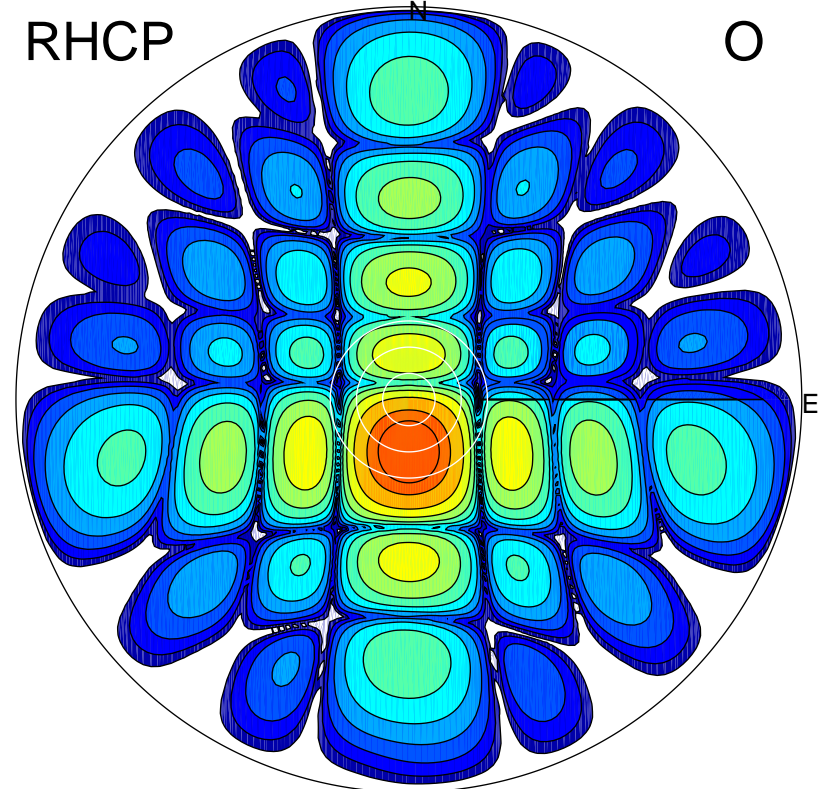
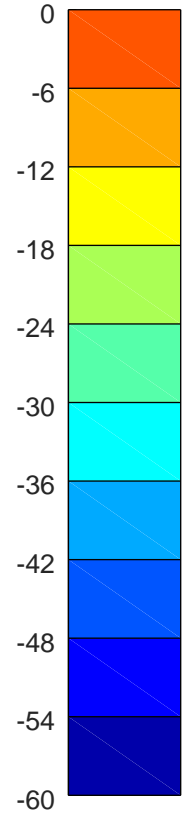
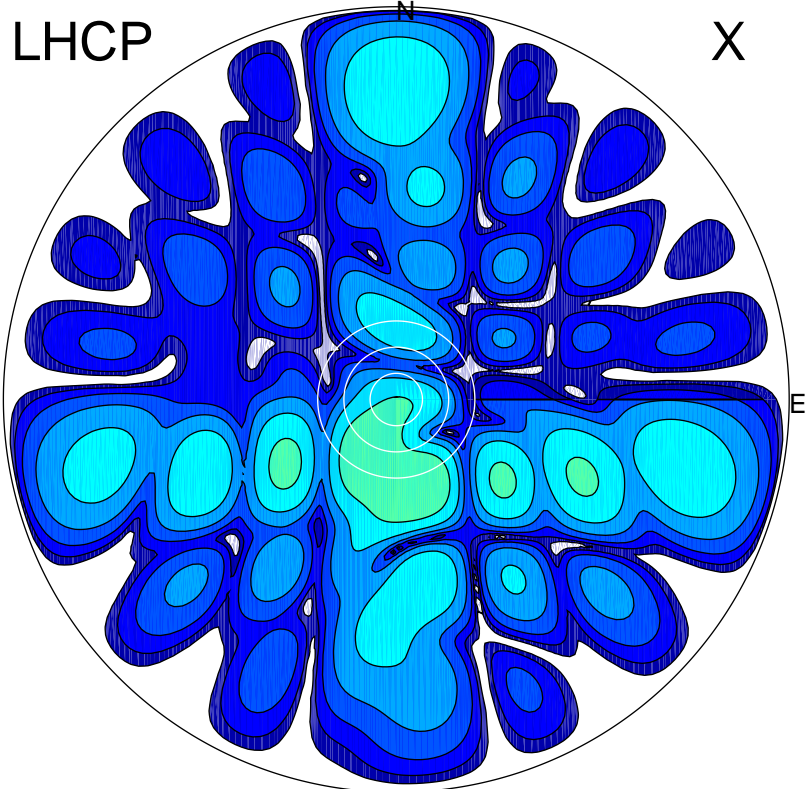


2019-10-18 14:25:00 A2 4.04000000 MHz 736.0 kW



ERP 0.5 MW

Peak gain -1.9 dBi at Az 167 Zen 20
RHCP gain 17.9 dBi
N-S peak -2.9 dBi at Zen -19.6
N-S -3 dB beamwidth 16.4 deg.

ERP 127.2 MW

Peak gain 22.4 dBi at Az 179 Zen 12
LHCP gain -5.3 dBi
N-S peak 22.4 dBi at Zen -11.9
N-S -3 dB beamwidth 14.2 deg.