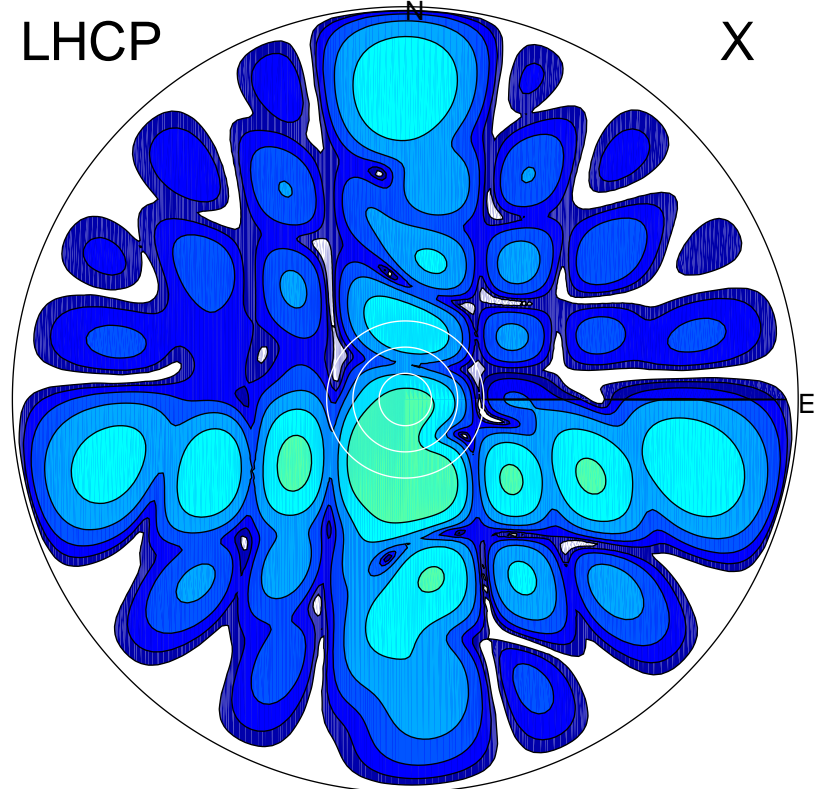


2019-10-18 14:23:00 A2 4.04000000 MHz 492.0 kW

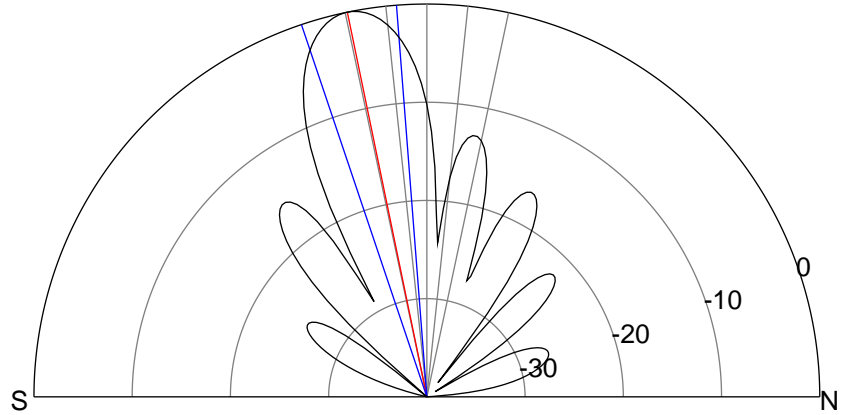
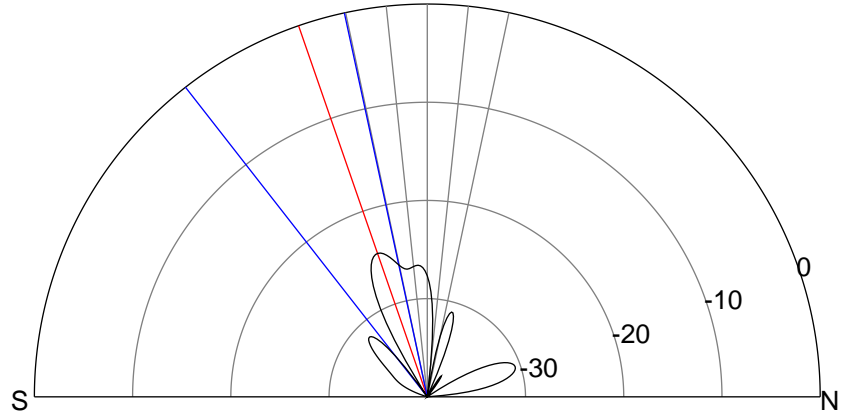
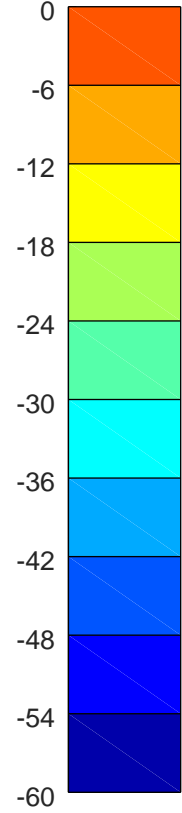
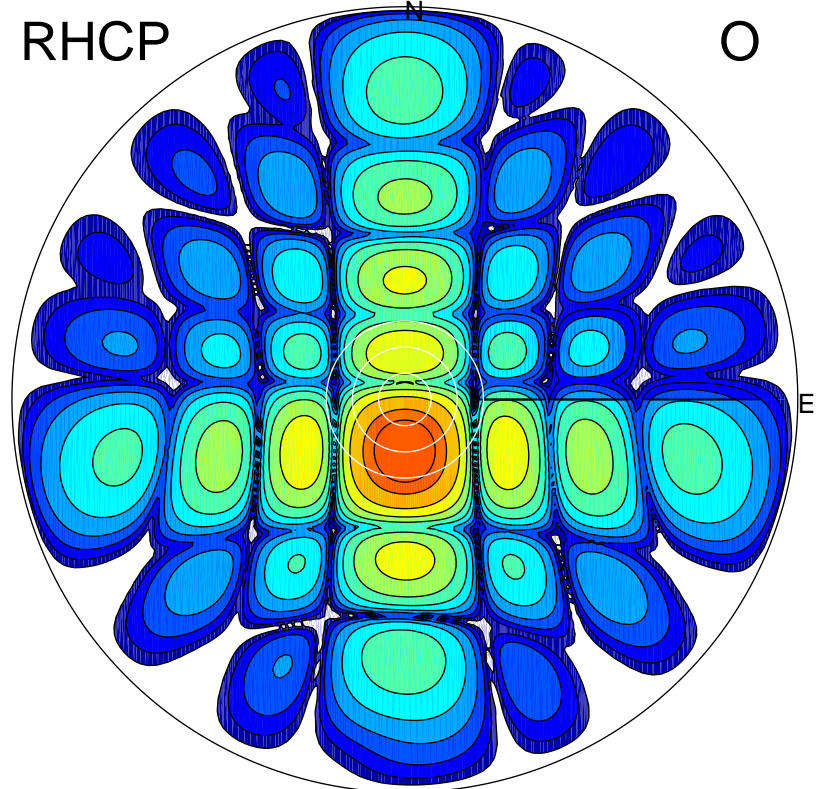
LHCP

X



RHCP

O



ERP 0.3 MW

Peak gain -1.8 dBi at Az 204 Zen 14
RHCP gain 20.4 dBi
N-S peak -2.2 dBi at Zen -19.1
N-S -3 dB beamwidth 25.8 deg.

ERP 84.6 MW

Peak gain 22.4 dBi at Az 180 Zen 12
LHCP gain -4.0 dBi
N-S peak 22.4 dBi at Zen -11.7
N-S -3 dB beamwidth 14.2 deg.