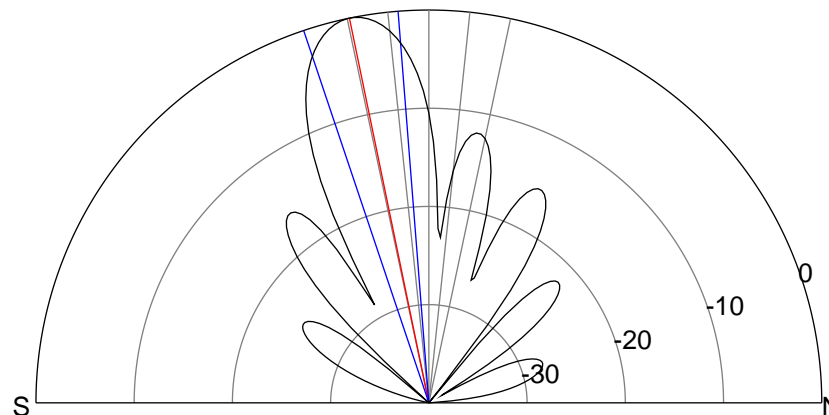
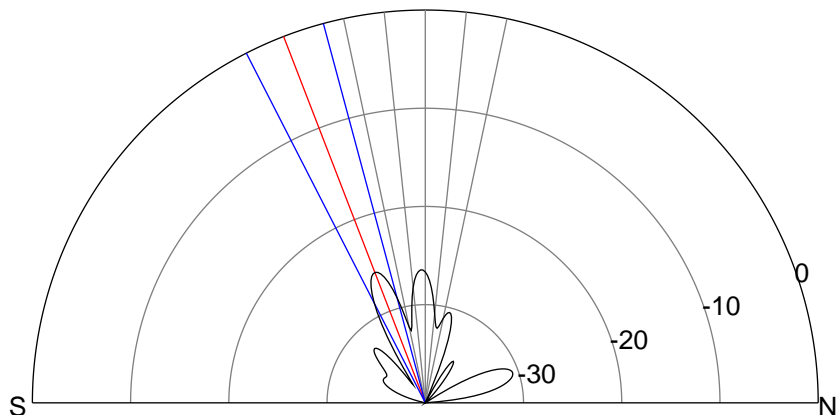
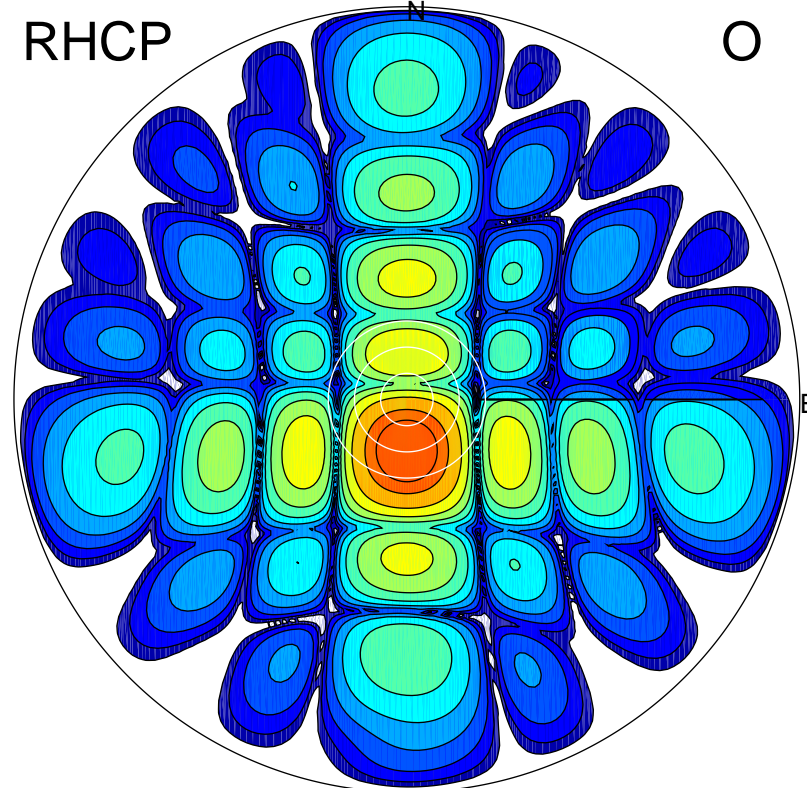
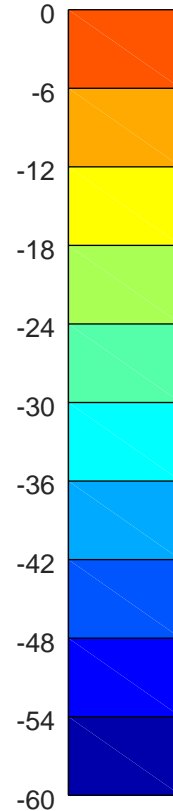
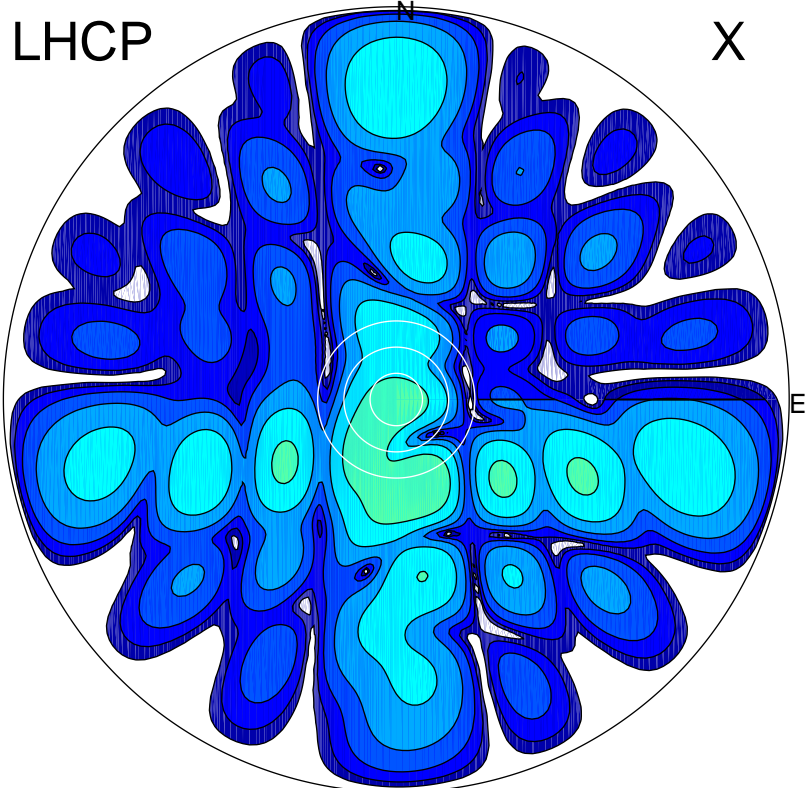


2019-10-18 14:21:00 A2 4.04000000 MHz 231.0 kW



### ERP 0.1 MW

Peak gain -2.0 dBi at Az 165 Zen 20  
RHCP gain 17.4 dBi  
N-S peak -3.4 dBi at Zen -21.1  
N-S -3 dB beamwidth 12.1 deg.

### ERP 39.7 MW

Peak gain 22.4 dBi at Az 180 Zen 12  
LHCP gain -9.8 dBi  
N-S peak 22.4 dBi at Zen -11.7  
N-S -3 dB beamwidth 14.1 deg.