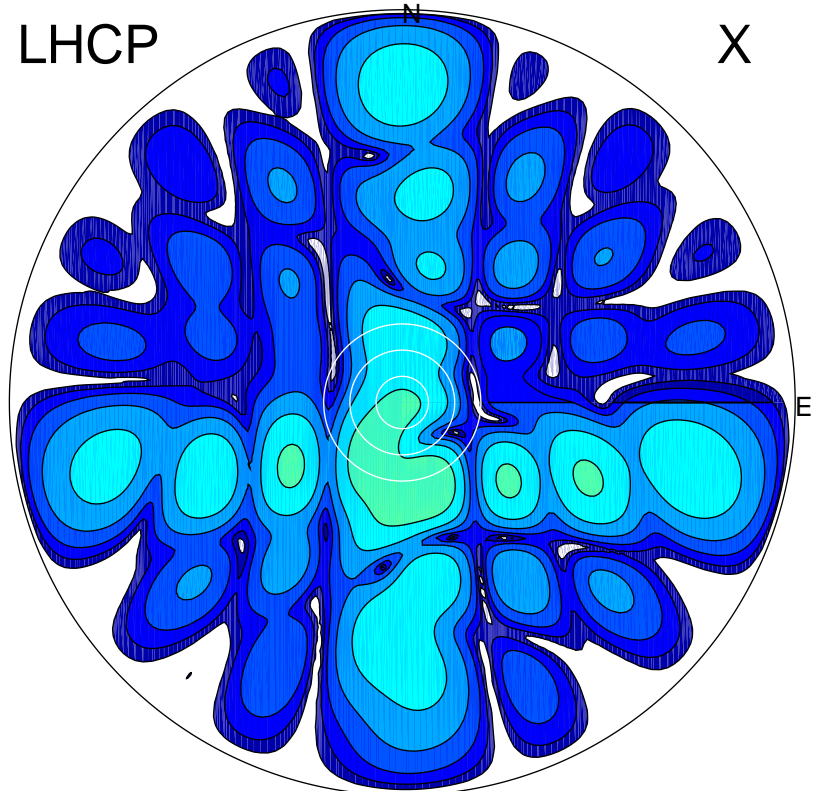


2019-10-18 14:19:00 A2 4.04000000 MHz 87.0 kW

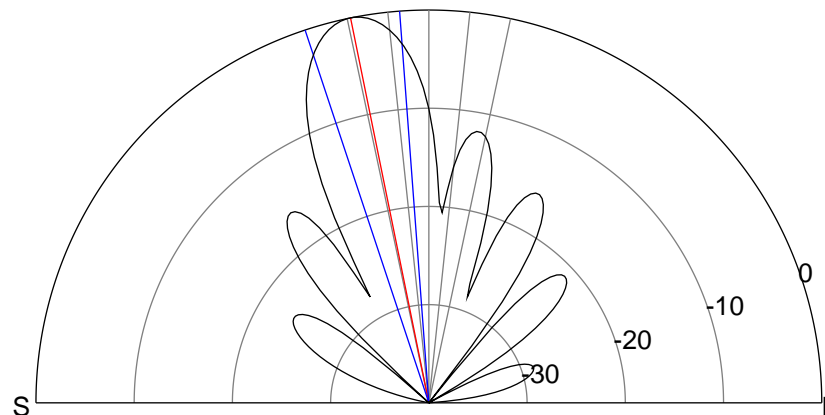
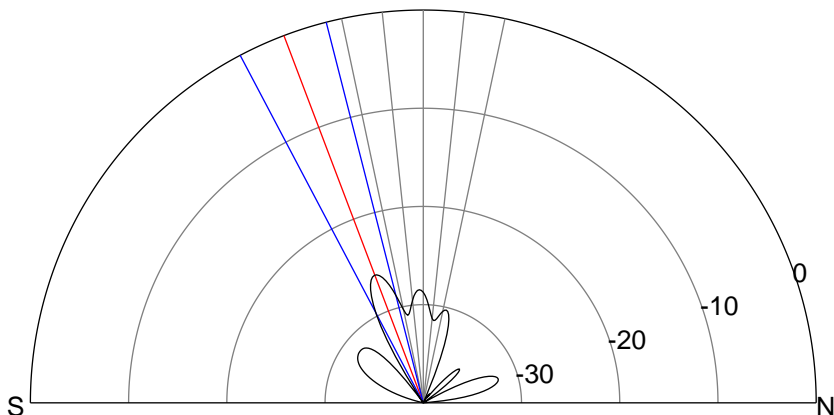
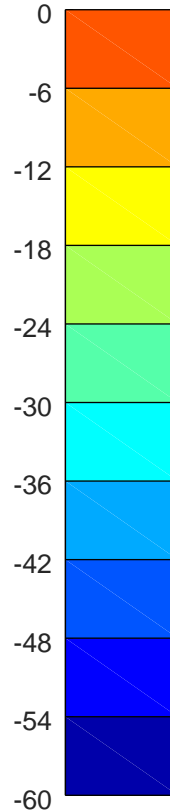
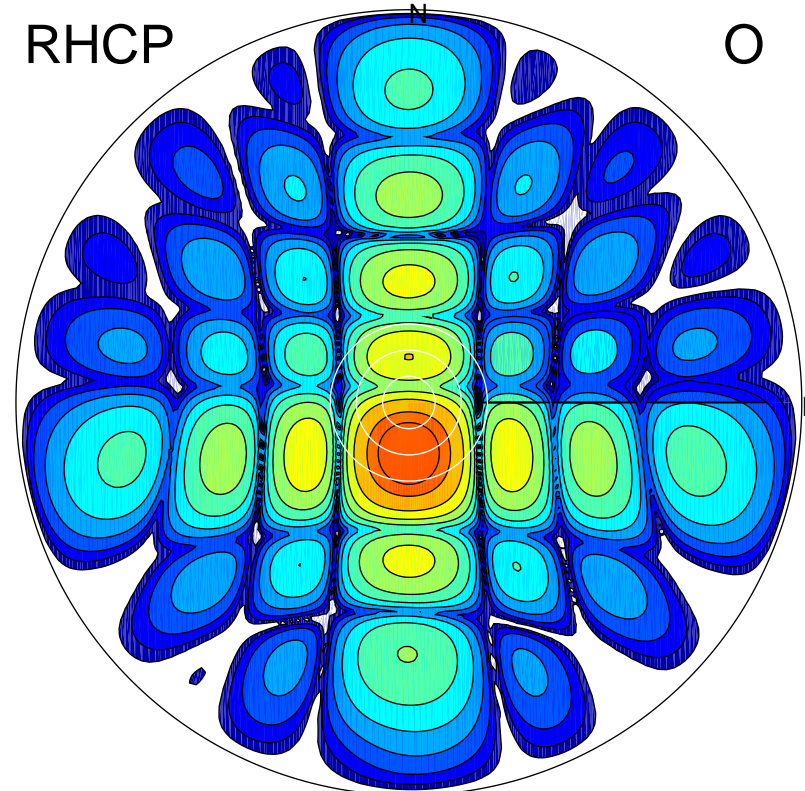
LHCP

X



RHCP

O



ERP 0.0 MW

Peak gain -2.4 dBi at Az 166 Zen 20
RHCP gain 17.4 dBi
N-S peak -3.8 dBi at Zen -20.8
N-S -3 dB beamwidth 13.5 deg.

ERP 14.9 MW

Peak gain 22.3 dBi at Az 179 Zen 11
LHCP gain -8.6 dBi
N-S peak 22.3 dBi at Zen -11.5
N-S -3 dB beamwidth 14.1 deg.