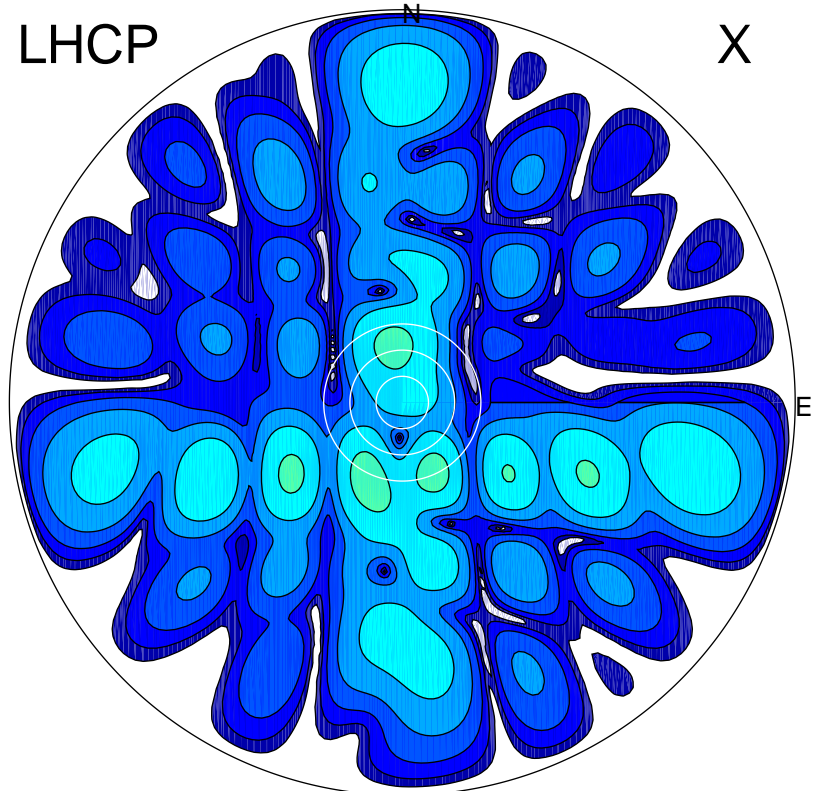
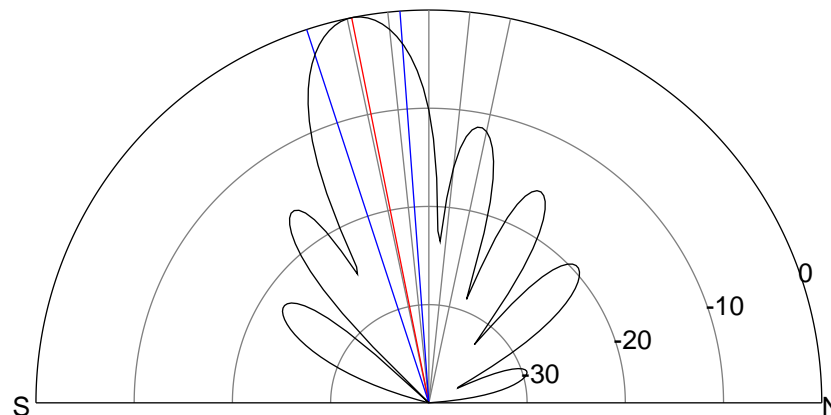
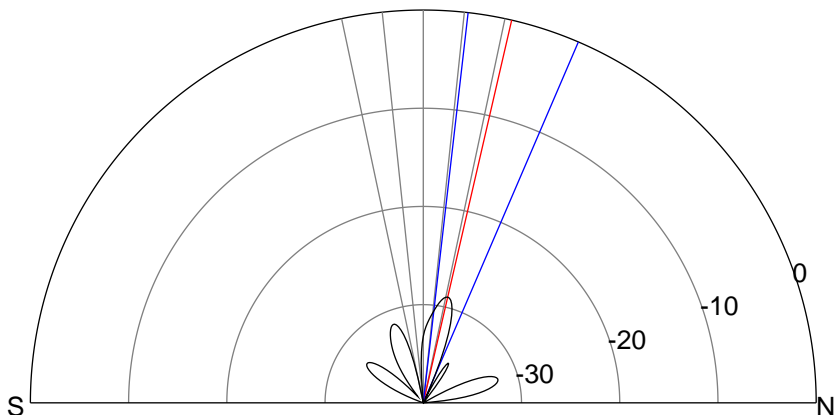
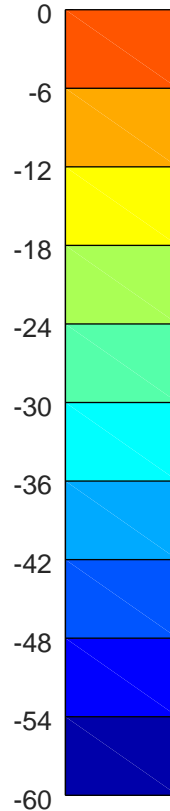
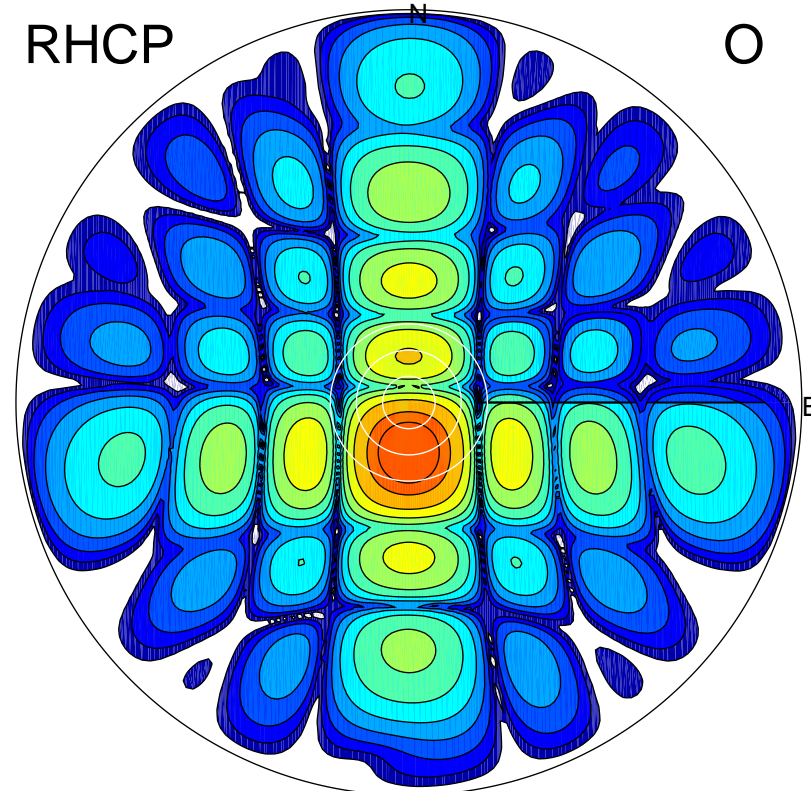


2019-10-18 14:17:00 A2 4.04000000 MHz 40.0 kW

LHCP



RHCP



### ERP 0.0 MW

Peak gain -5.5 dBi at Az 205 Zen 19  
RHCP gain 16.5 dBi  
N-S peak -6.6 dBi at Zen 13.0  
N-S -3 dB beamwidth 16.7 deg.

### ERP 6.9 MW

Peak gain 22.4 dBi at Az 181 Zen 11  
LHCP gain -17.7 dBi  
N-S peak 22.4 dBi at Zen -11.3  
N-S -3 dB beamwidth 13.9 deg.