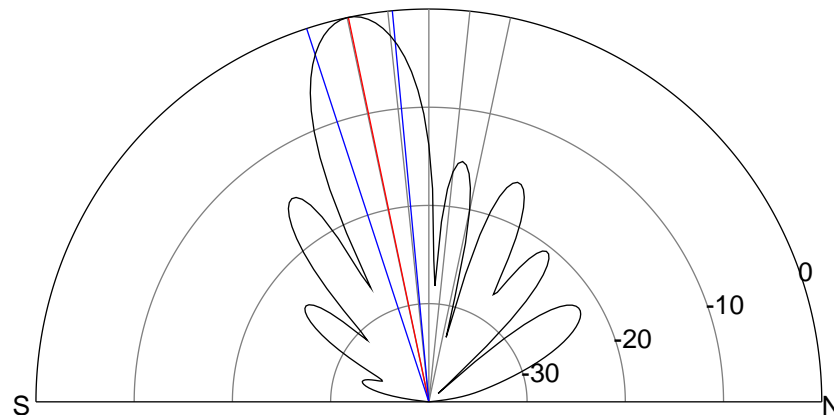
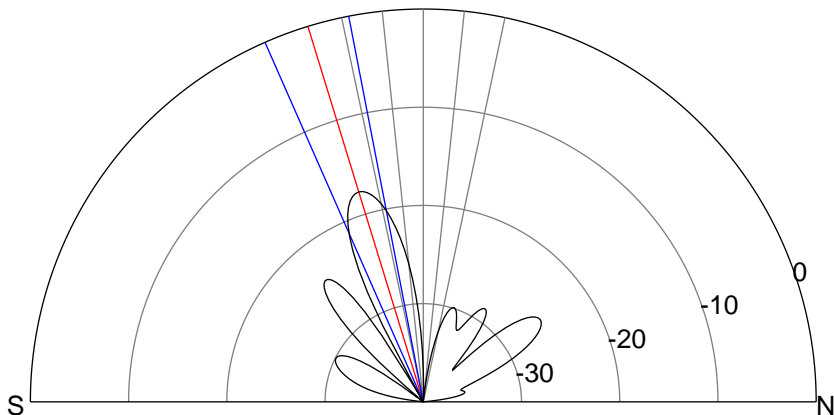
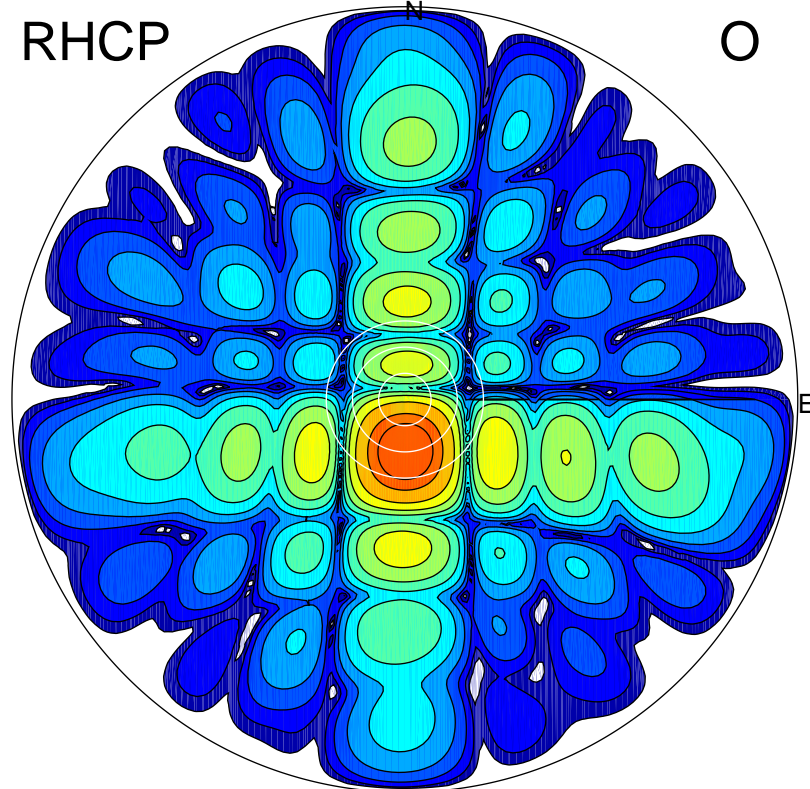
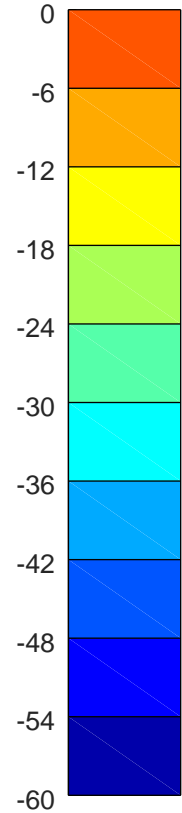
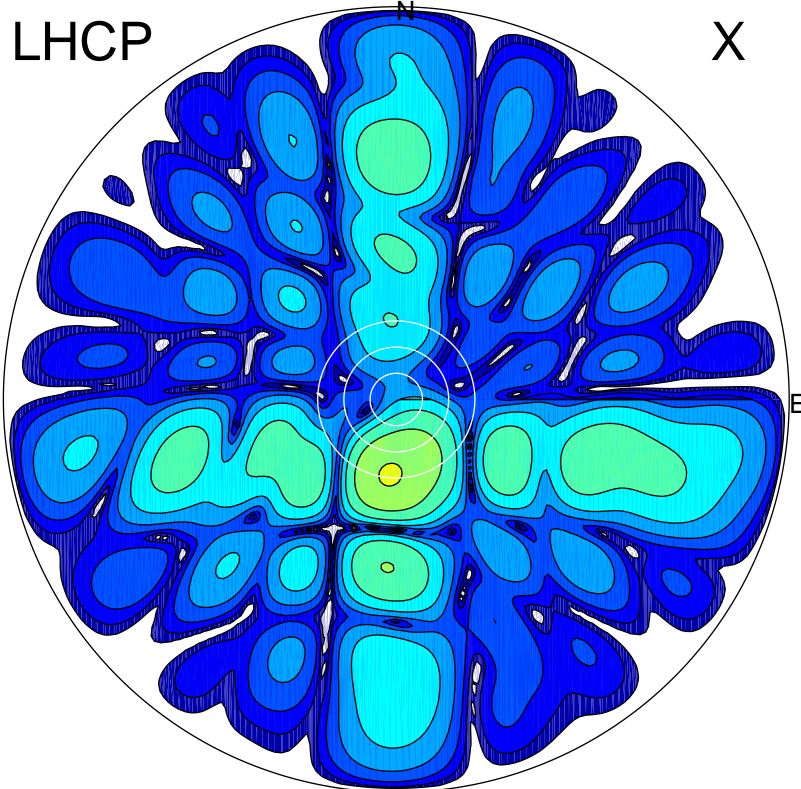


2019-10-18 13:30:00 A2 4.54400000 MHz 217.0 kW



ERP 0.8 MW

Peak gain 5.6 dBi at Az 185 Zen 17
RHCP gain 21.1 dBi
N-S peak 5.5 dBi at Zen -17.1
N-S -3 dB beamwidth 12.8 deg.

ERP 44.3 MW

Peak gain 23.1 dBi at Az 178 Zen 12
LHCP gain 3.7 dBi
N-S peak 23.1 dBi at Zen -11.8
N-S -3 dB beamwidth 12.8 deg.