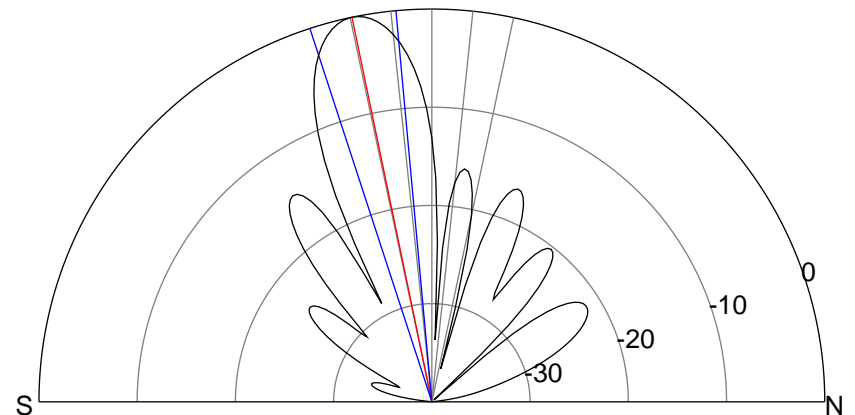
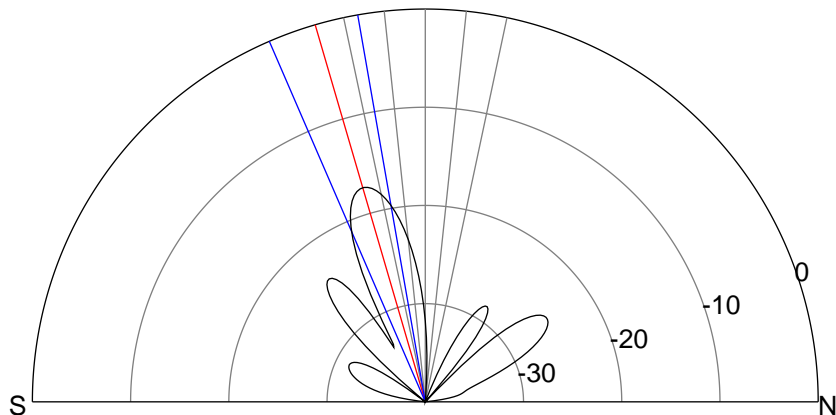
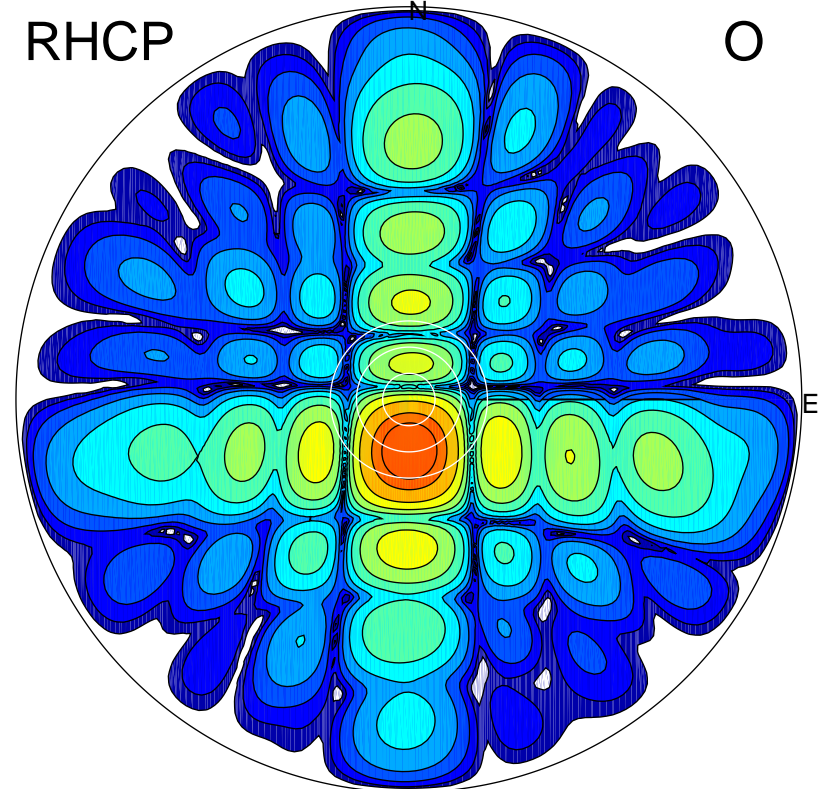
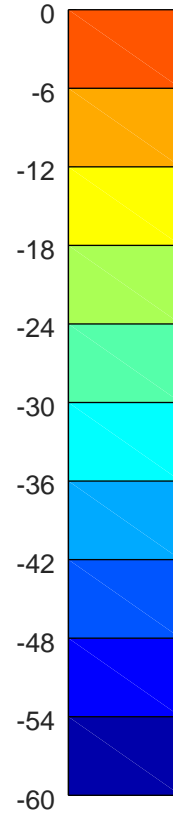
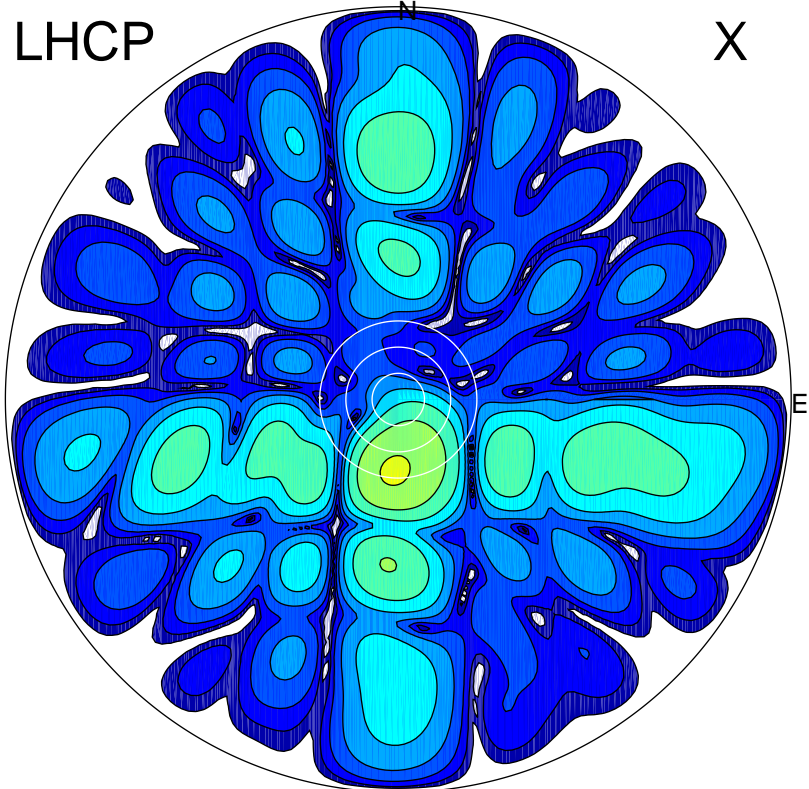


2019-10-18 13:27:00 A2 4.54400000 MHz 444.0 kW



ERP 1.7 MW

Peak gain 5.8 dBi at Az 183 Zen 16
RHCP gain 21.8 dBi
N-S peak 5.8 dBi at Zen -16.3
N-S -3 dB beamwidth 13.5 deg.

ERP 90.4 MW

Peak gain 23.1 dBi at Az 179 Zen 12
LHCP gain 4.7 dBi
N-S peak 23.1 dBi at Zen -11.7
N-S -3 dB beamwidth 12.8 deg.