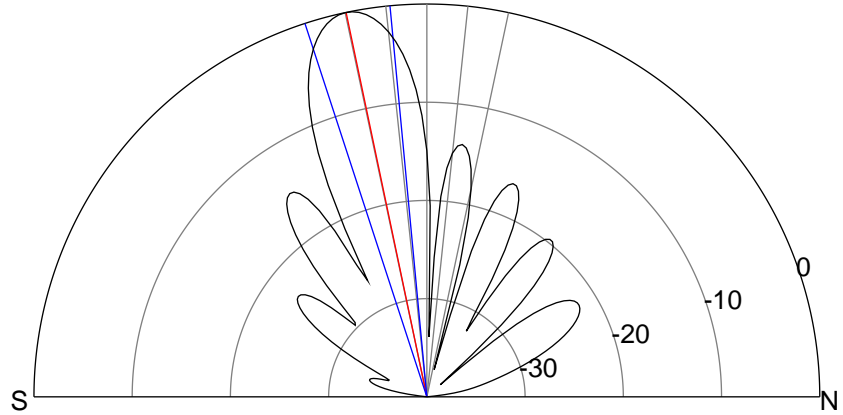
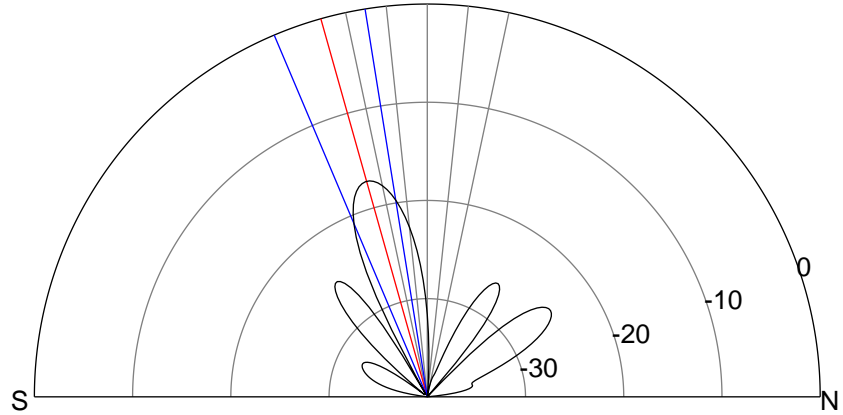
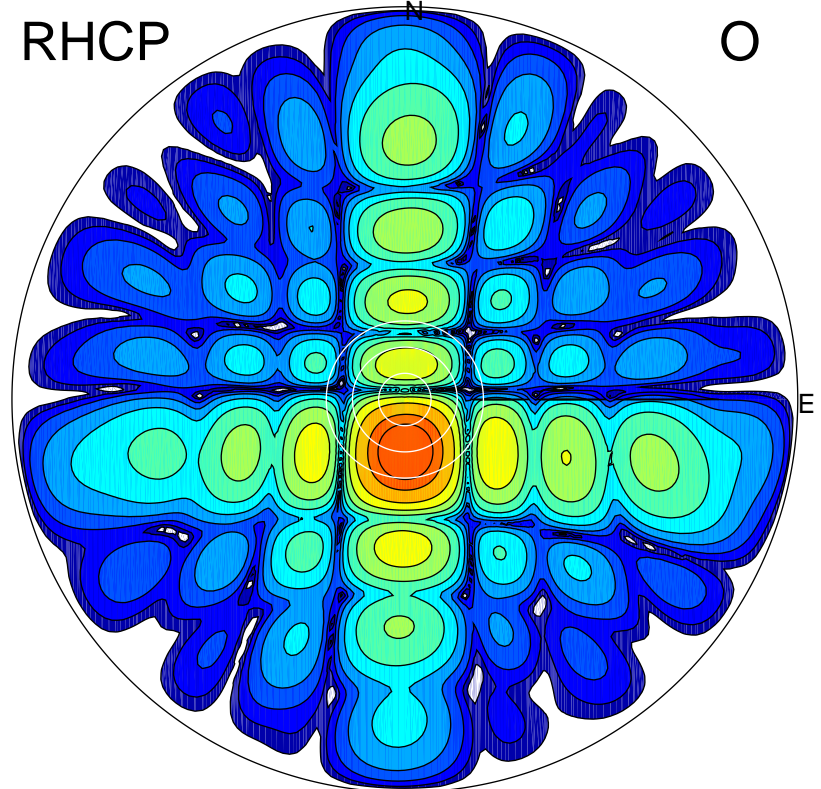
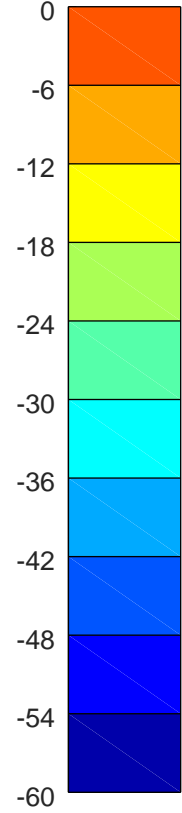
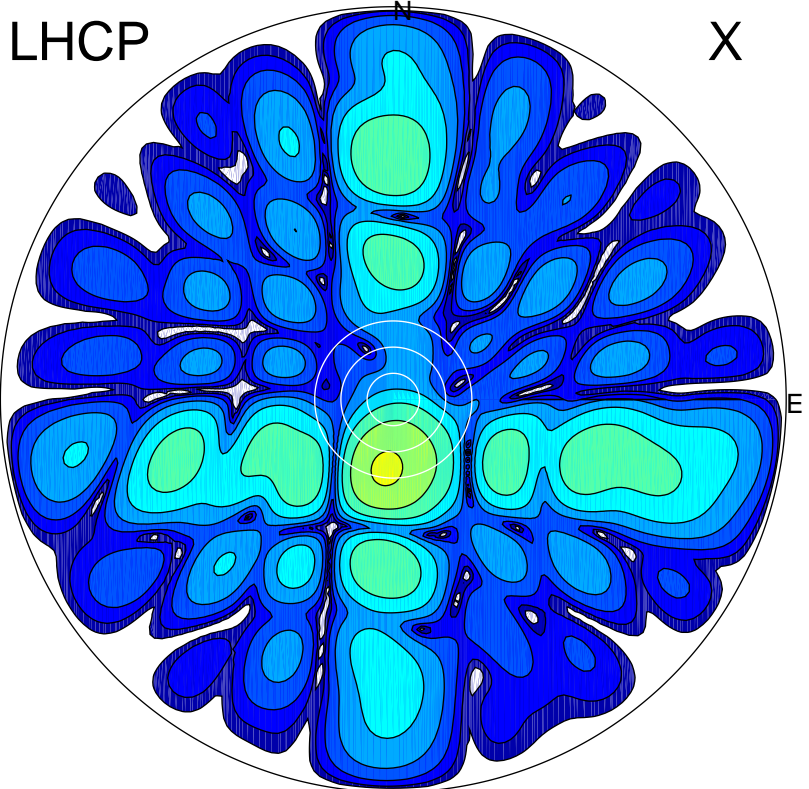


2019-10-18 13:21:00 A2 4.54400000 MHz 876.0 kW



### ERP 3.6 MW

Peak gain 6.1 dBi at Az 186 Zen 16  
RHCP gain 21.8 dBi  
N-S peak 5.9 dBi at Zen -15.7  
N-S -3 dB beamwidth 13.8 deg.

### ERP 179.9 MW

Peak gain 23.1 dBi at Az 179 Zen 12  
LHCP gain 5.1 dBi  
N-S peak 23.1 dBi at Zen -11.9  
N-S -3 dB beamwidth 12.7 deg.