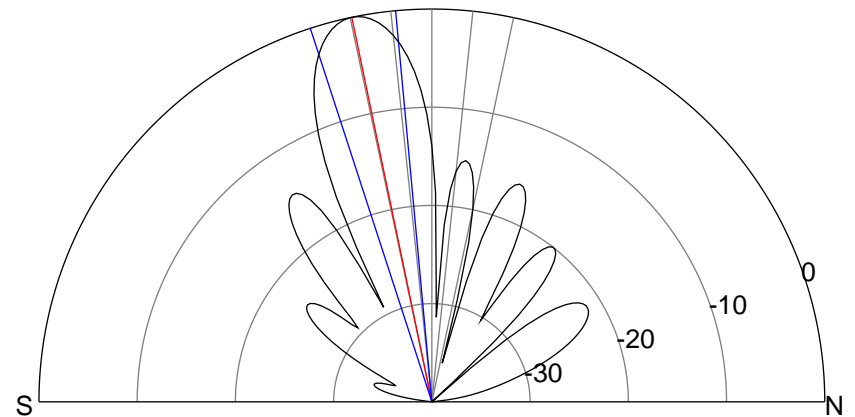
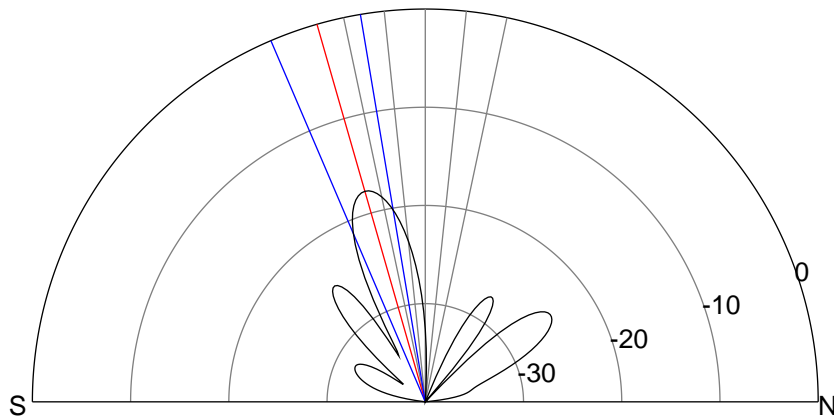
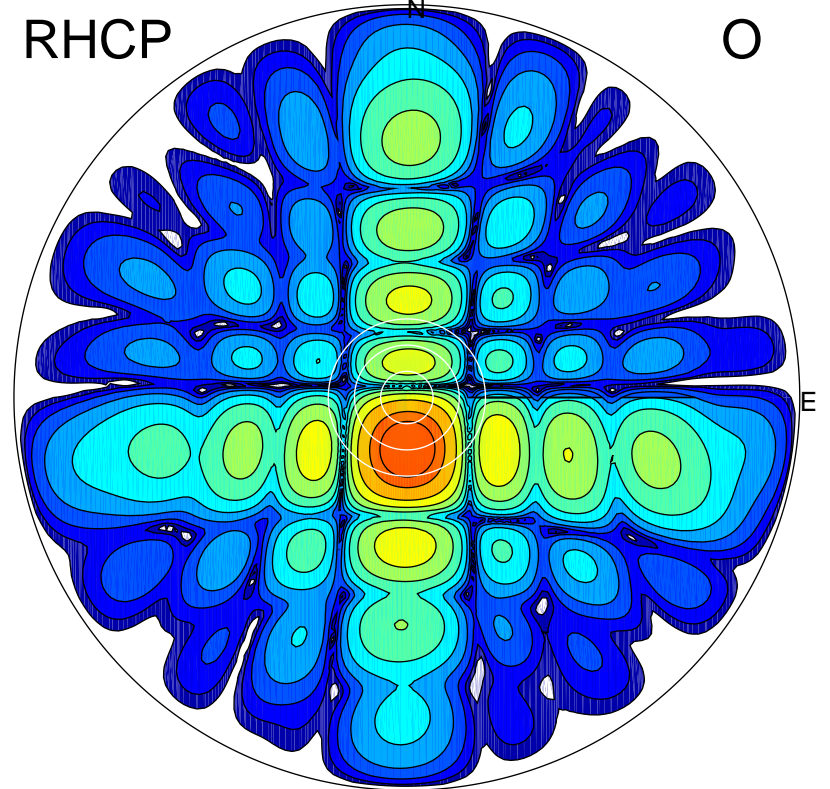
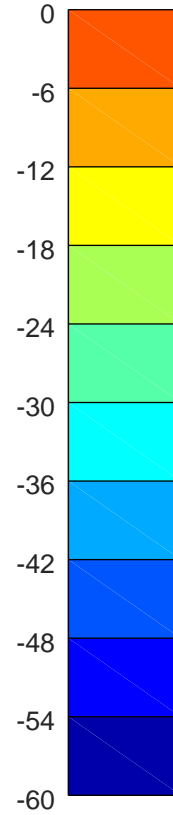
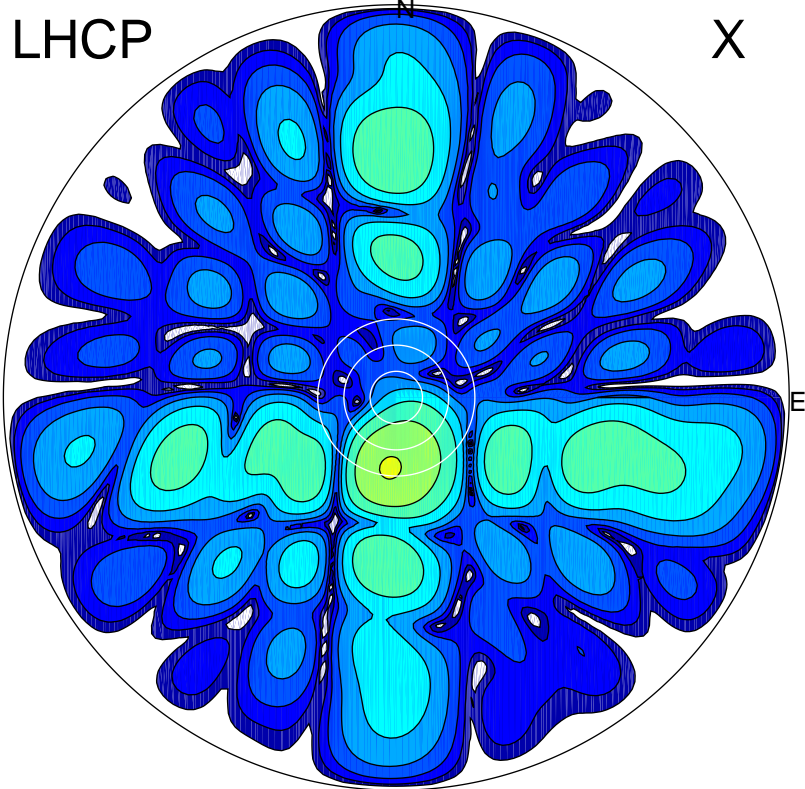


2019-10-18 13:18:01 A2 4.54400000 MHz 670.0 kW



### ERP 2.4 MW

Peak gain 5.6 dBi at Az 185 Zen 16  
RHCP gain 21.7 dBi  
N-S peak 5.4 dBi at Zen -16.0  
N-S -3 dB beamwidth 13.6 deg.

### ERP 137.3 MW

Peak gain 23.1 dBi at Az 178 Zen 12  
LHCP gain 4.4 dBi  
N-S peak 23.1 dBi at Zen -11.8  
N-S -3 dB beamwidth 12.7 deg.