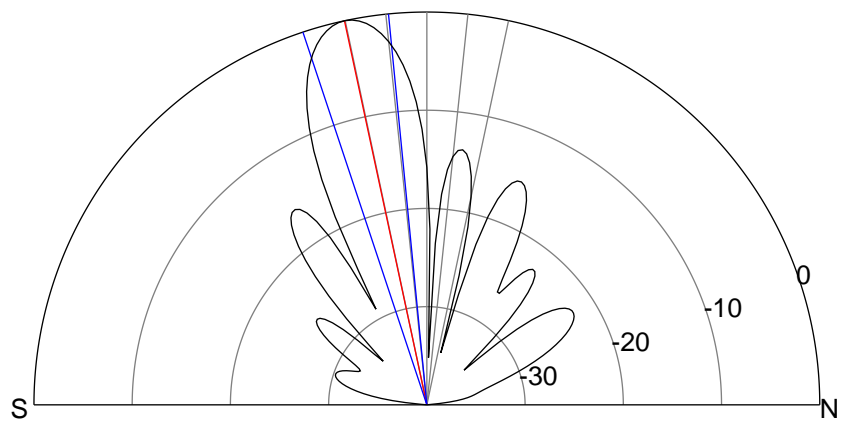
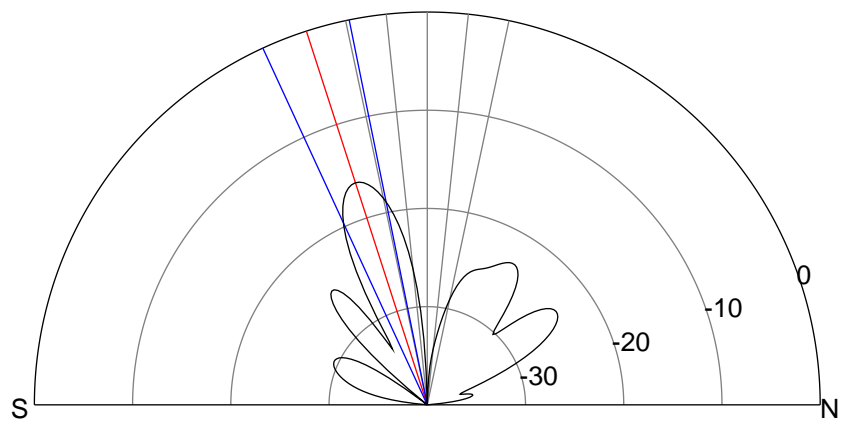
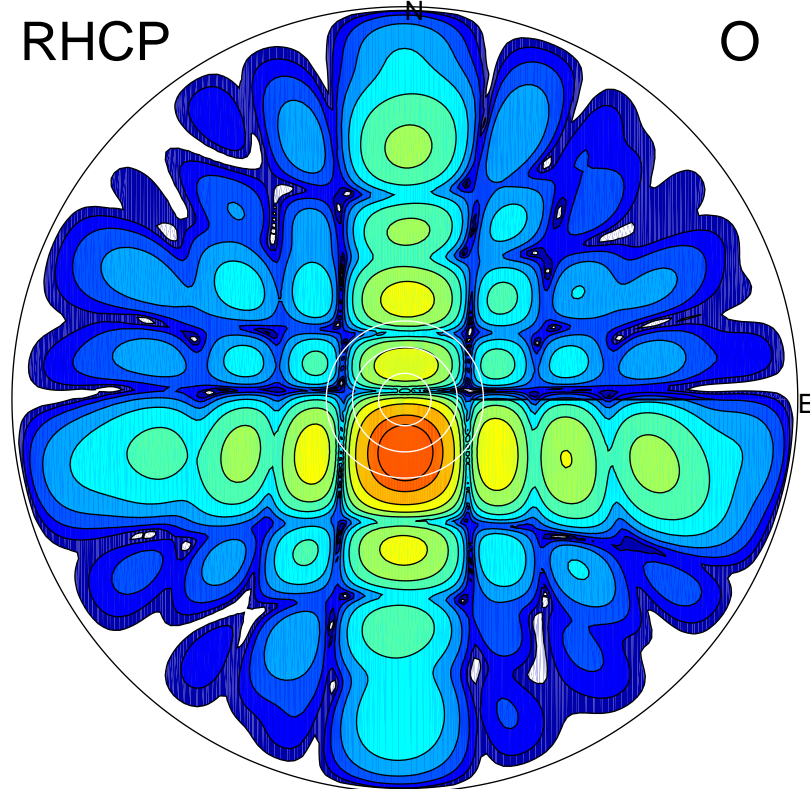
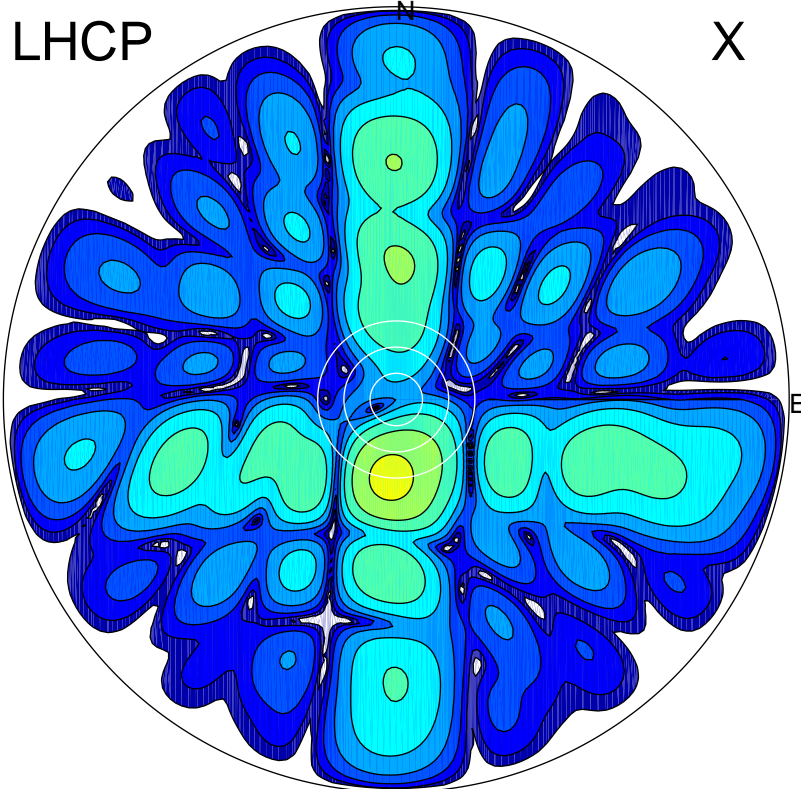


2019-10-18 13:15:00 A2 4.54400000 MHz 445.0 kW



### ERP 2.2 MW

Peak gain 7.0 dBi at Az 184 Zen 18  
RHCP gain 20.5 dBi  
N-S peak 6.8 dBi at Zen -17.9  
N-S -3 dB beamwidth 13.3 deg.

### ERP 89.9 MW

Peak gain 23.1 dBi at Az 178 Zen 12  
LHCP gain 4.5 dBi  
N-S peak 23.1 dBi at Zen -12.1  
N-S -3 dB beamwidth 12.8 deg.