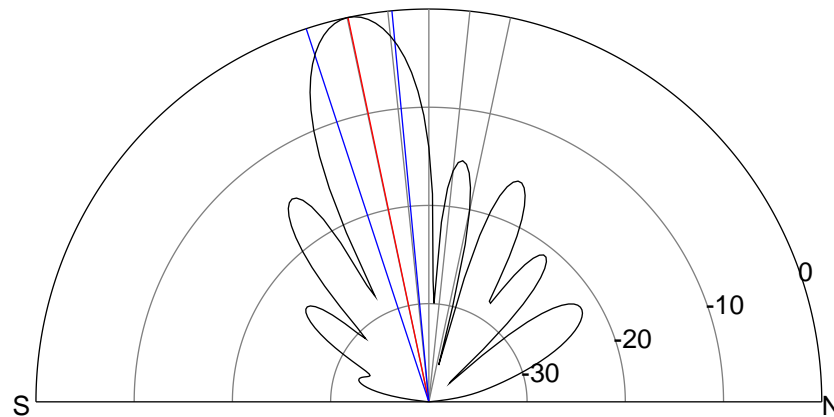
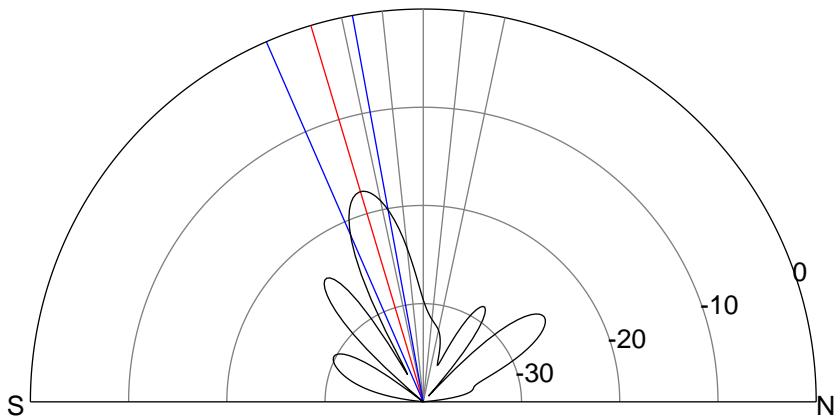
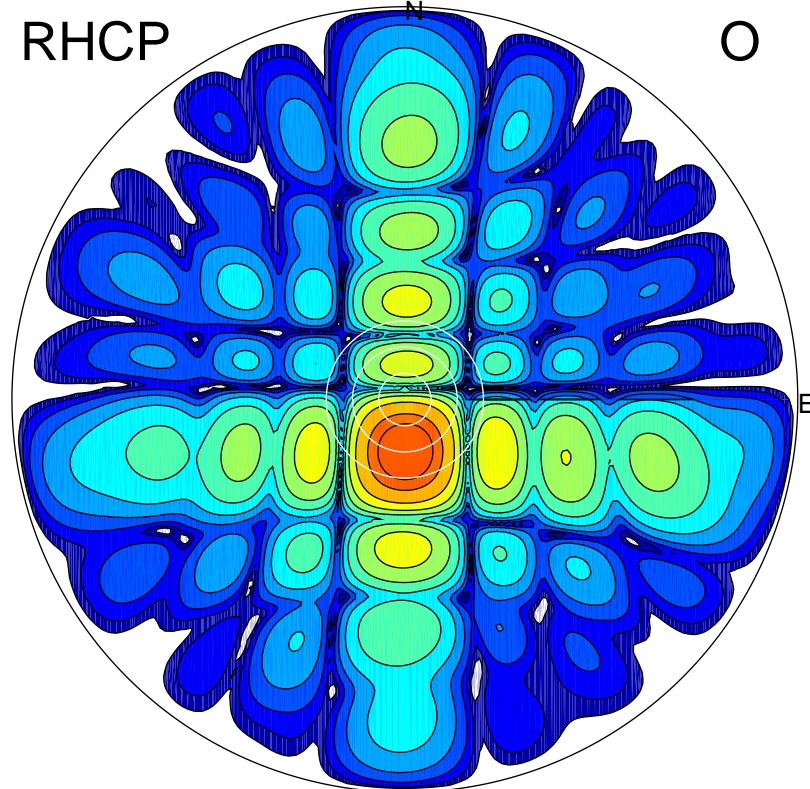
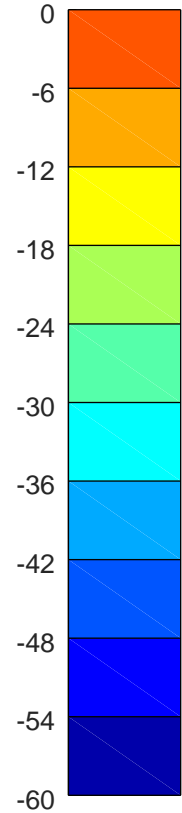
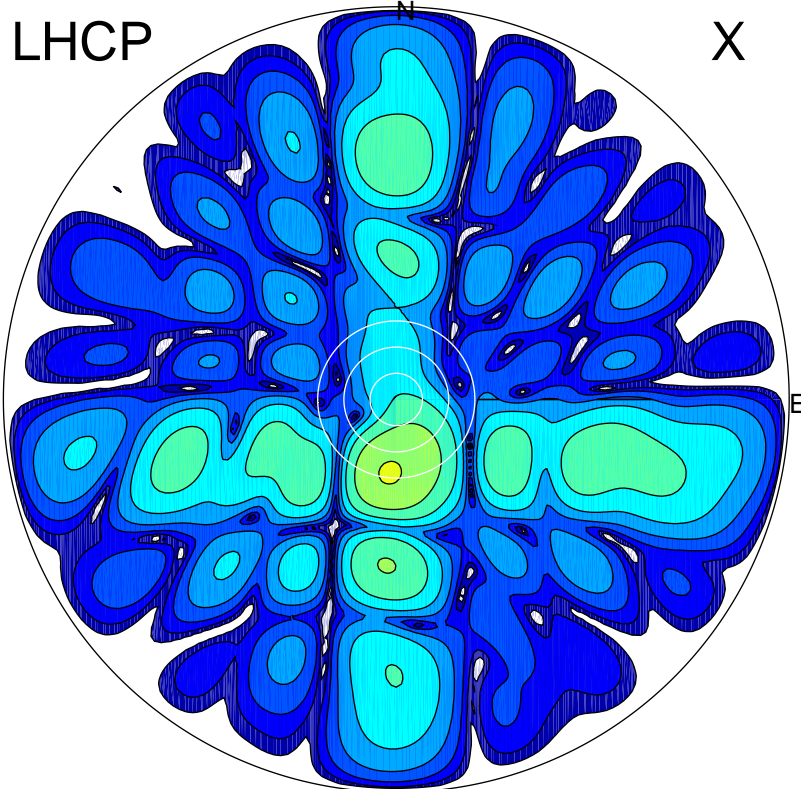


2019-10-18 13:12:00 A2 4.54400000 MHz 215.0 kW



ERP 0.8 MW

Peak gain 5.6 dBi at Az 185 Zen 17
RHCP gain 21.1 dBi
N-S peak 5.4 dBi at Zen -16.6
N-S -3 dB beamwidth 13.1 deg.

ERP 43.9 MW

Peak gain 23.1 dBi at Az 178 Zen 12
LHCP gain 4.0 dBi
N-S peak 23.1 dBi at Zen -11.9
N-S -3 dB beamwidth 12.8 deg.