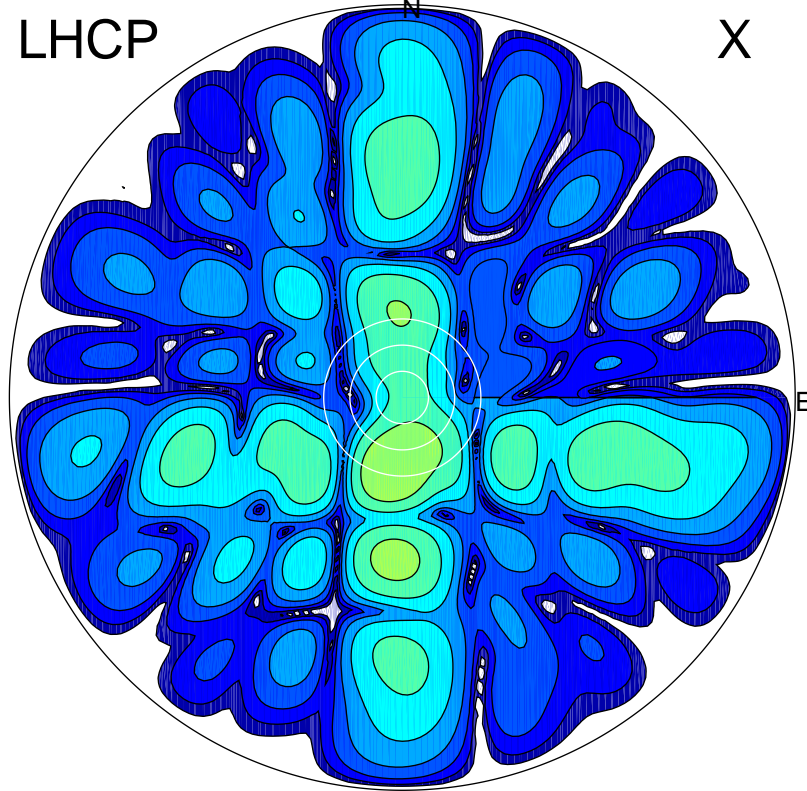


2019-10-18 13:09:00 A2 4.54400000 MHz 81.0 kW

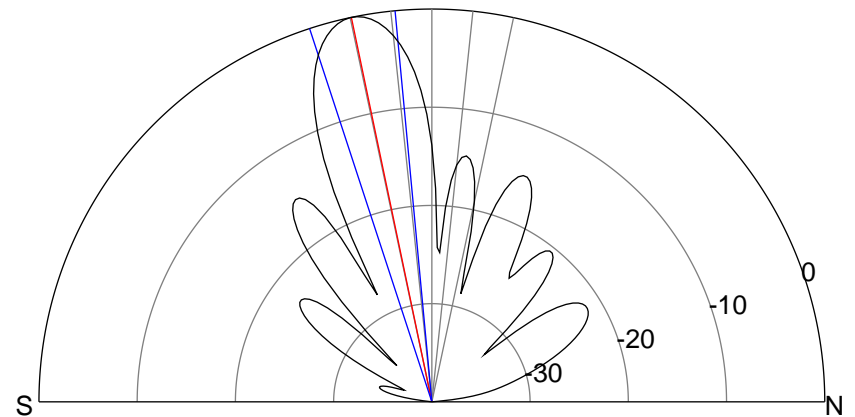
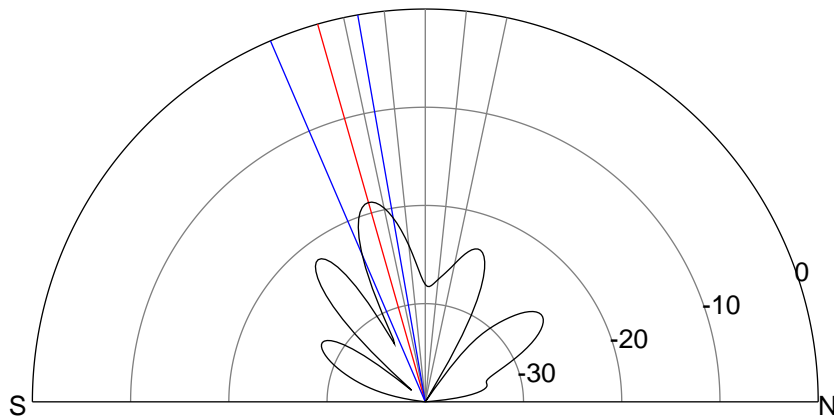
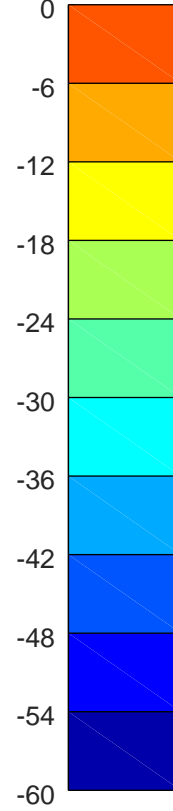
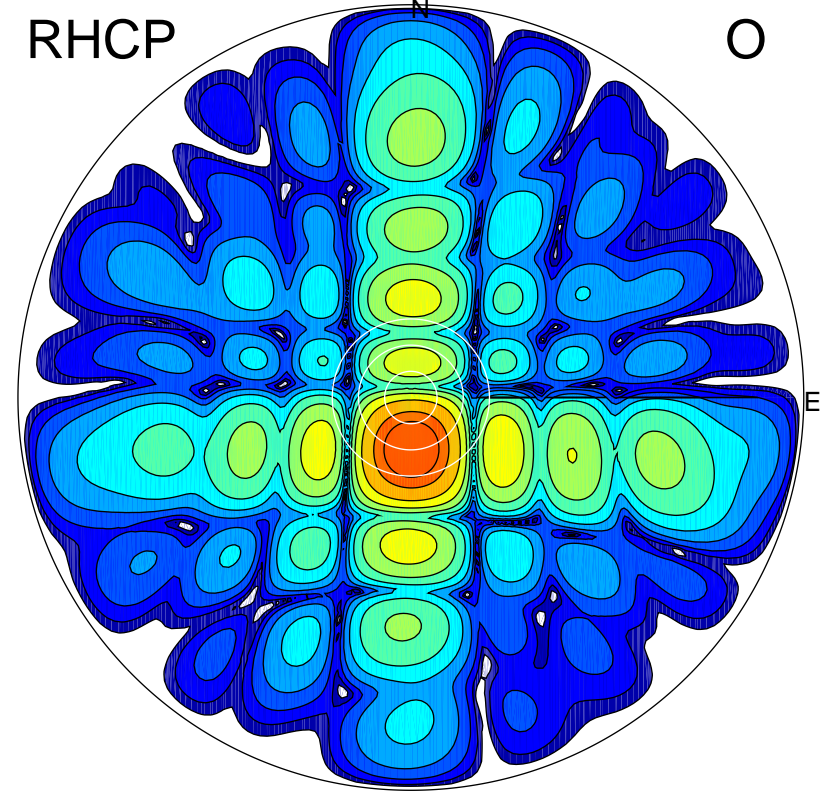
LHCP

X



RHCP

O



ERP 0.2 MW

Peak gain 4.6 dBi at Az 189 Zen 17
RHCP gain 20.8 dBi
N-S peak 4.2 dBi at Zen -15.9
N-S -3 dB beamwidth 13.3 deg.

ERP 16.4 MW

Peak gain 23.1 dBi at Az 178 Zen 12
LHCP gain 3.2 dBi
N-S peak 23.1 dBi at Zen -11.8
N-S -3 dB beamwidth 12.8 deg.