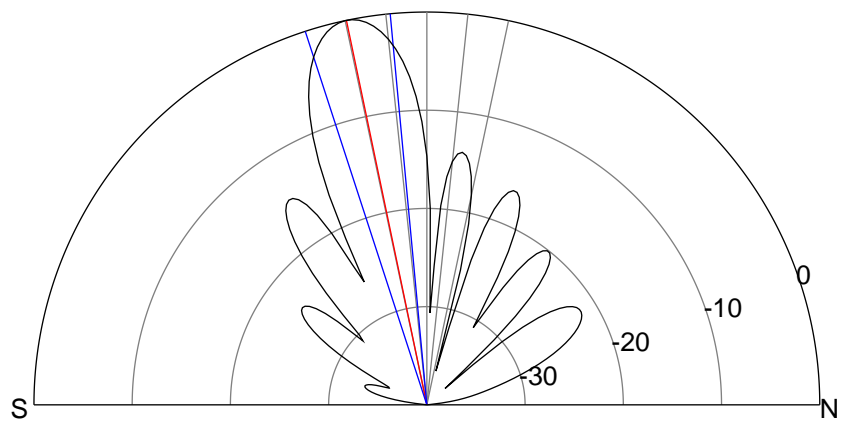
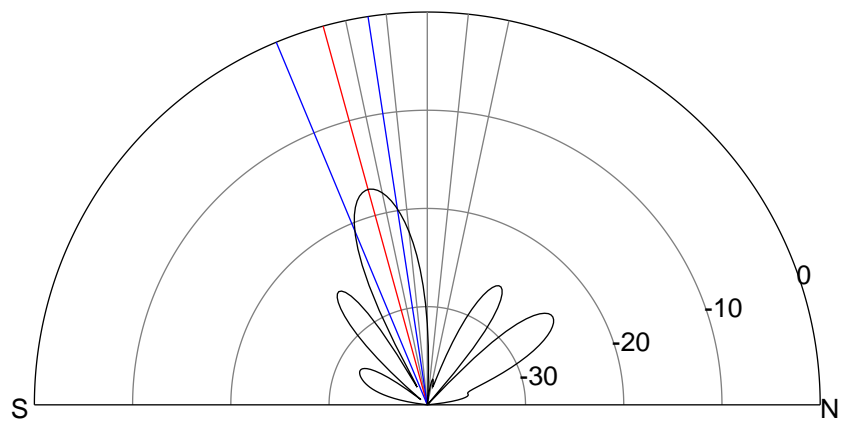
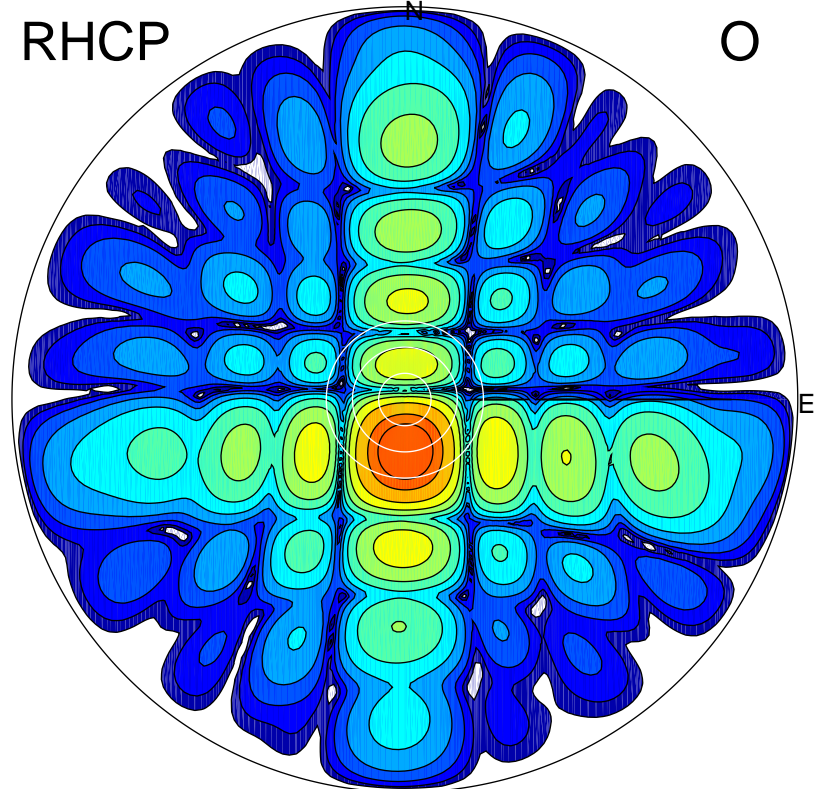
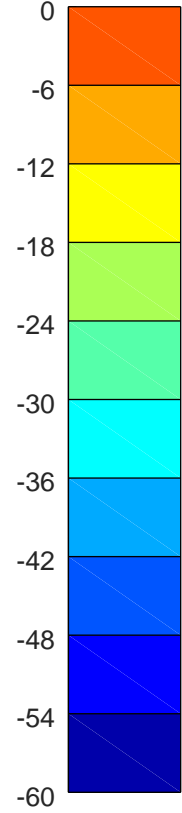
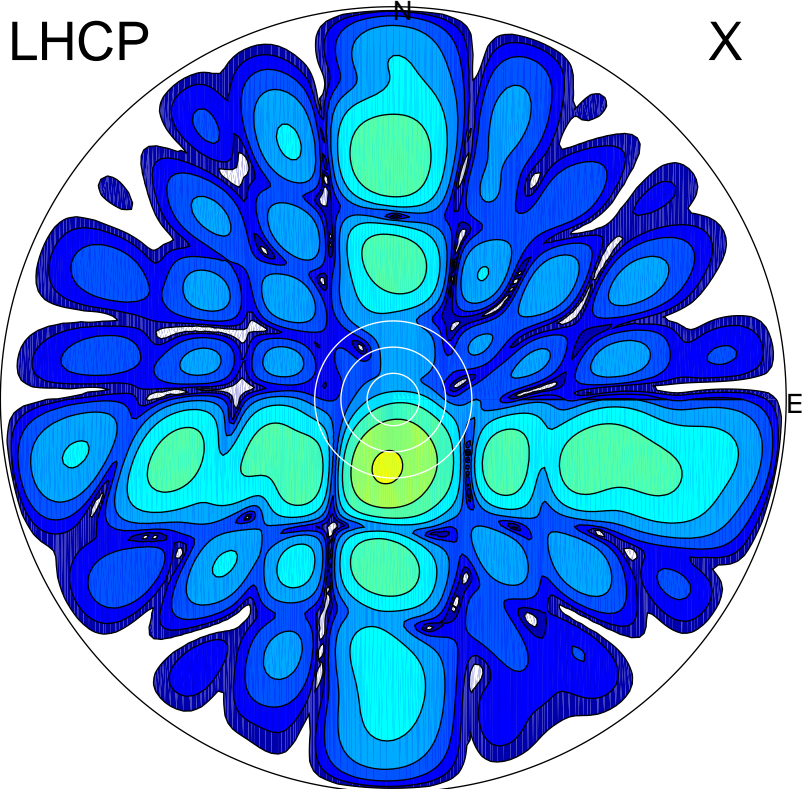


2019-10-18 12:57:00 A2 4.54400000 MHz 886.0 kW



ERP 3.5 MW

Peak gain 6.0 dBi at Az 186 Zen 16
RHCP gain 21.7 dBi
N-S peak 5.9 dBi at Zen -15.4
N-S -3 dB beamwidth 13.9 deg.

ERP 181.5 MW

Peak gain 23.1 dBi at Az 178 Zen 12
LHCP gain 5.1 dBi
N-S peak 23.1 dBi at Zen -11.8
N-S -3 dB beamwidth 12.7 deg.