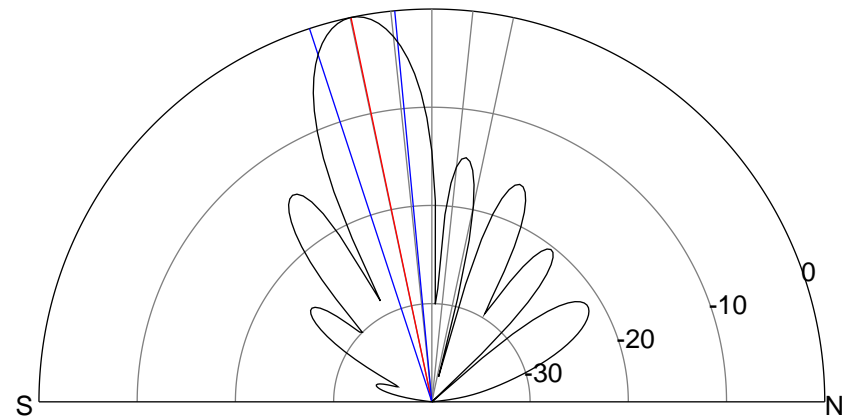
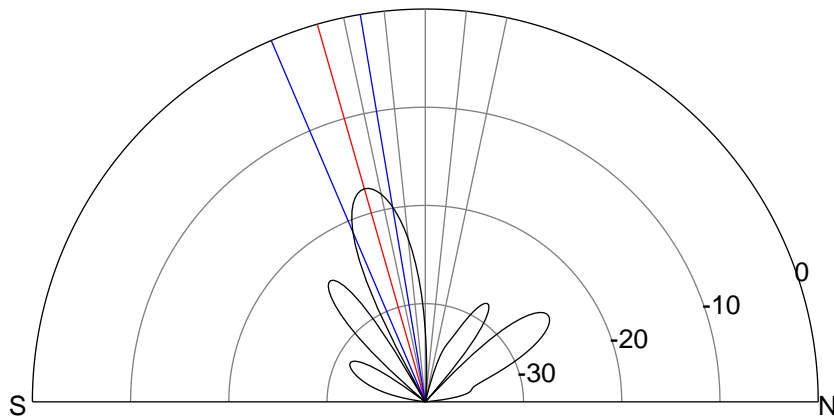
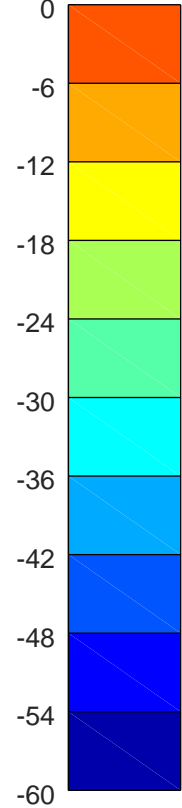
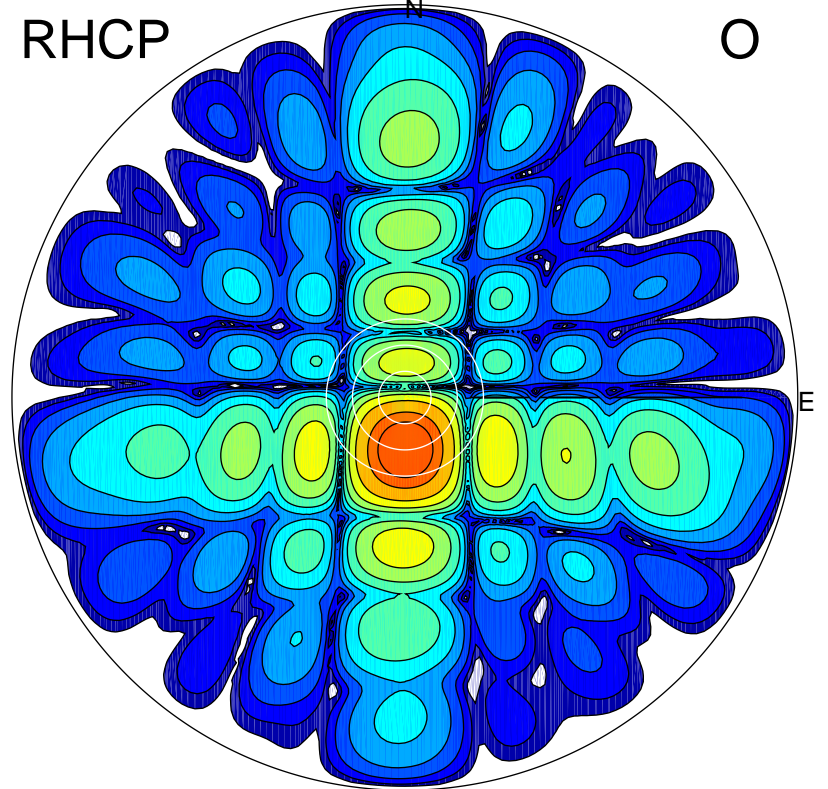
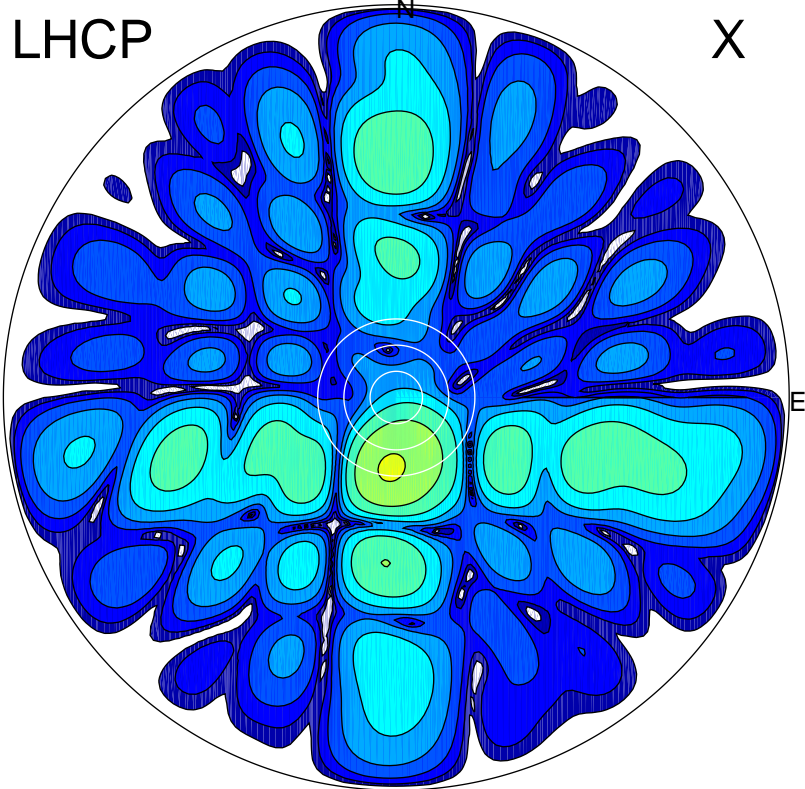


2019-10-18 12:55:01 A2 4.54400000 MHz 676.0 kW



ERP 2.5 MW

Peak gain 5.8 dBi at Az 184 Zen 16
RHCP gain 21.8 dBi
N-S peak 5.7 dBi at Zen -16.0
N-S -3 dB beamwidth 13.6 deg.

ERP 138.3 MW

Peak gain 23.1 dBi at Az 178 Zen 12
LHCP gain 4.7 dBi
N-S peak 23.1 dBi at Zen -11.9
N-S -3 dB beamwidth 12.7 deg.