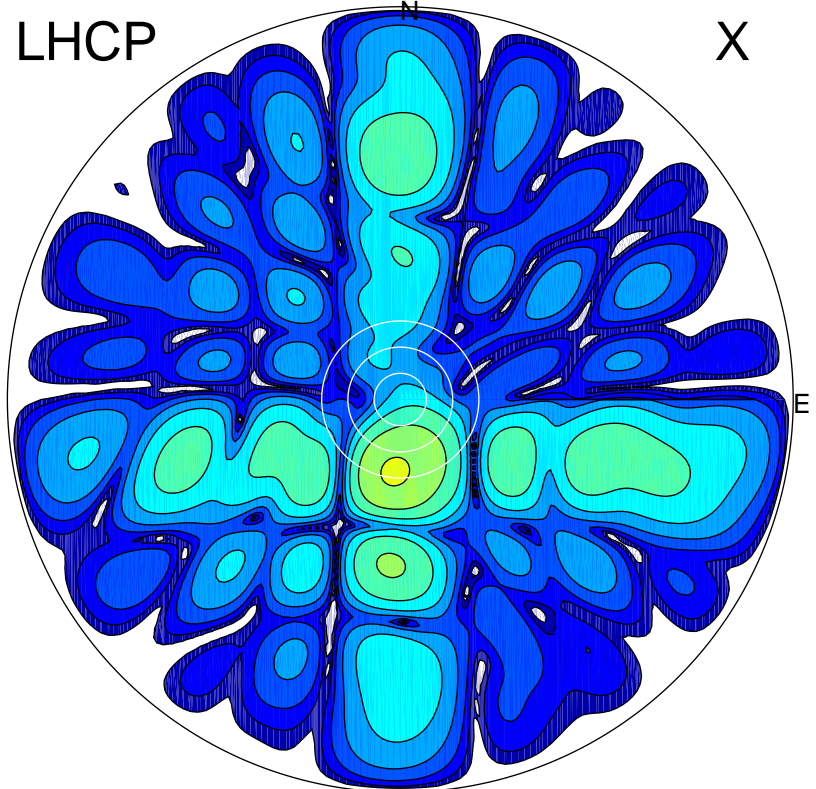


2019-10-18 12:53:00 A2 4.54400000 MHz 448.0 kW

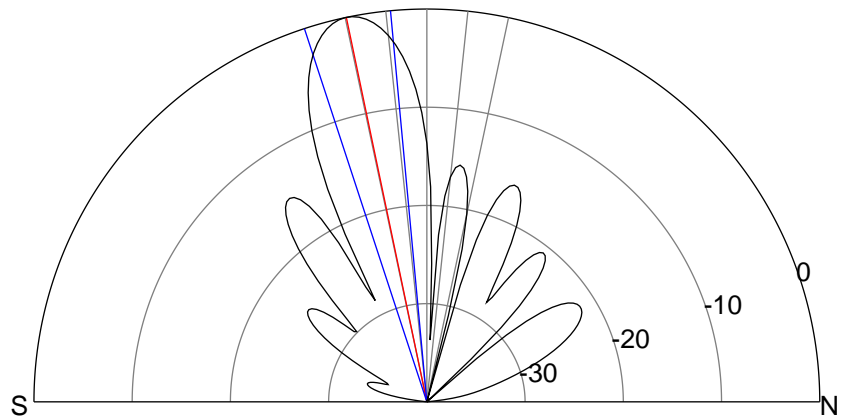
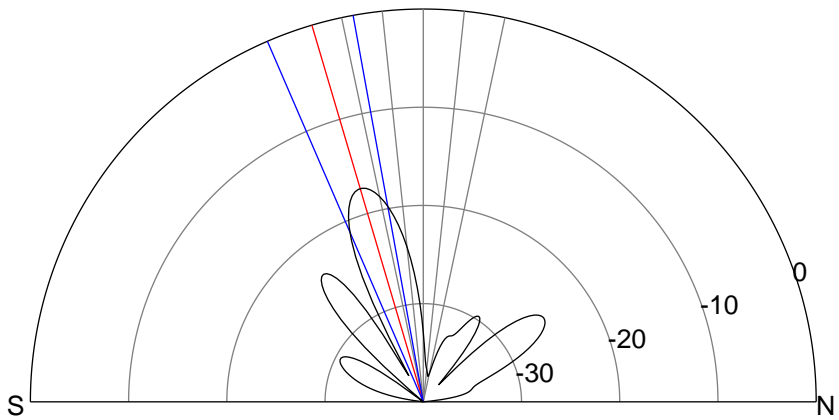
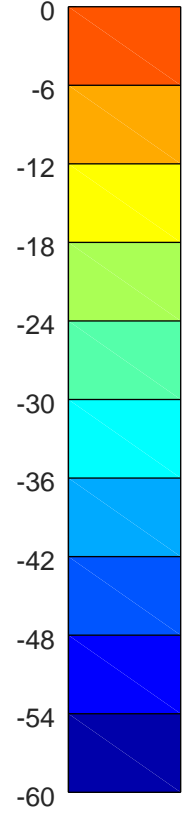
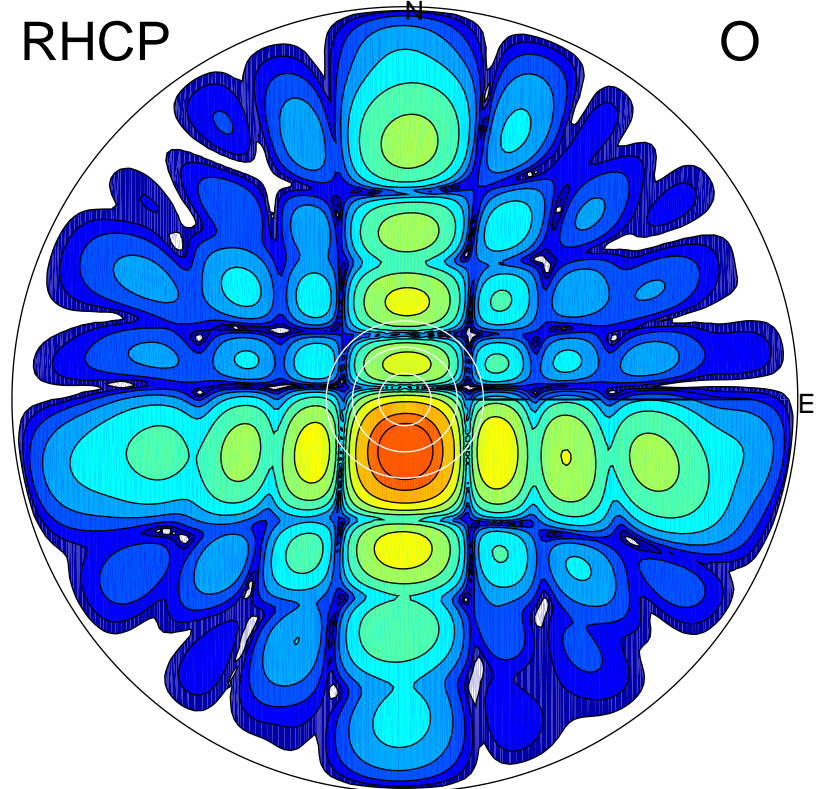
LHCP

X



RHCP

O



ERP 1.7 MW

Peak gain 5.9 dBi at Az 185 Zen 17
RHCP gain 21.1 dBi
N-S peak 5.7 dBi at Zen -16.5
N-S -3 dB beamwidth 13.1 deg.

ERP 91.3 MW

Peak gain 23.1 dBi at Az 178 Zen 12
LHCP gain 4.4 dBi
N-S peak 23.1 dBi at Zen -11.8
N-S -3 dB beamwidth 12.8 deg.