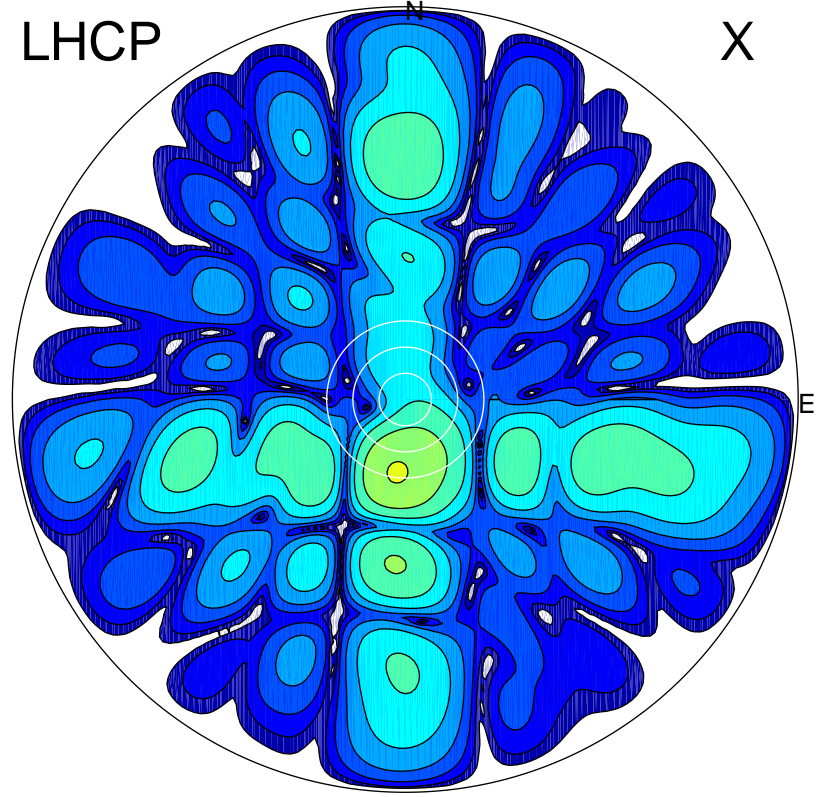


2019-10-18 12:51:00 A2 4.54400000 MHz 218.0 kW

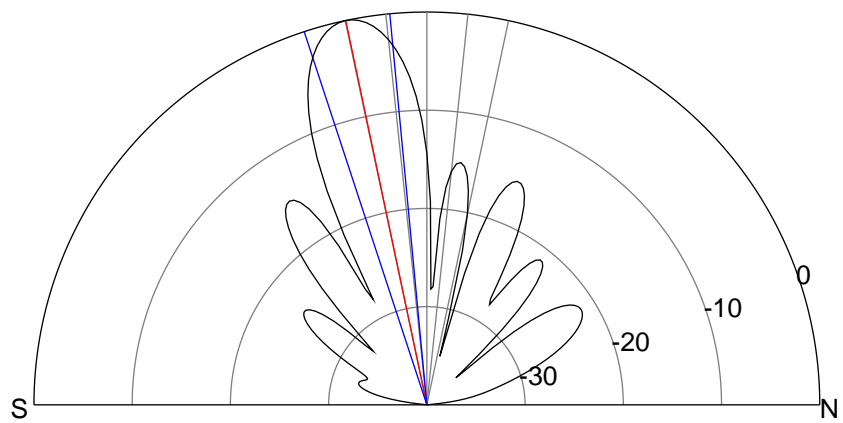
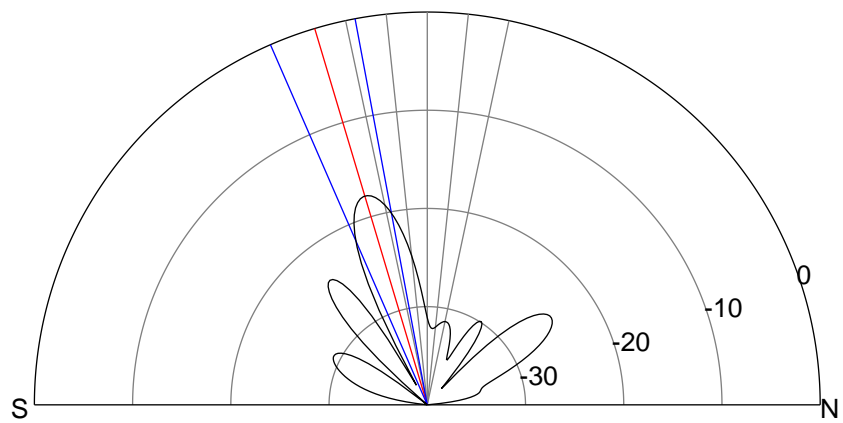
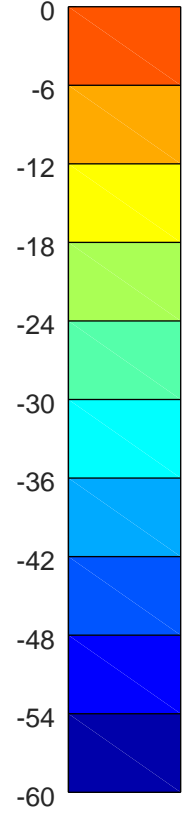
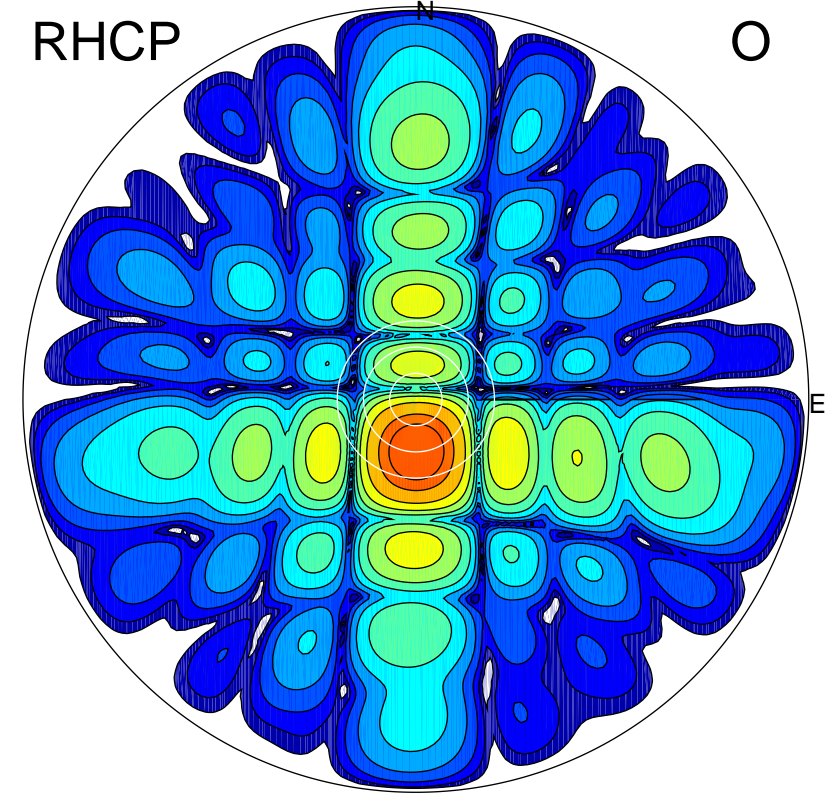
LHCP

X



RHCP

O



ERP 0.8 MW

Peak gain 5.5 dBi at Az 186 Zen 17
RHCP gain 21.1 dBi
N-S peak 5.3 dBi at Zen -16.7
N-S -3 dB beamwidth 12.9 deg.

ERP 44.5 MW

Peak gain 23.1 dBi at Az 178 Zen 12
LHCP gain 3.8 dBi
N-S peak 23.1 dBi at Zen -11.9
N-S -3 dB beamwidth 12.8 deg.