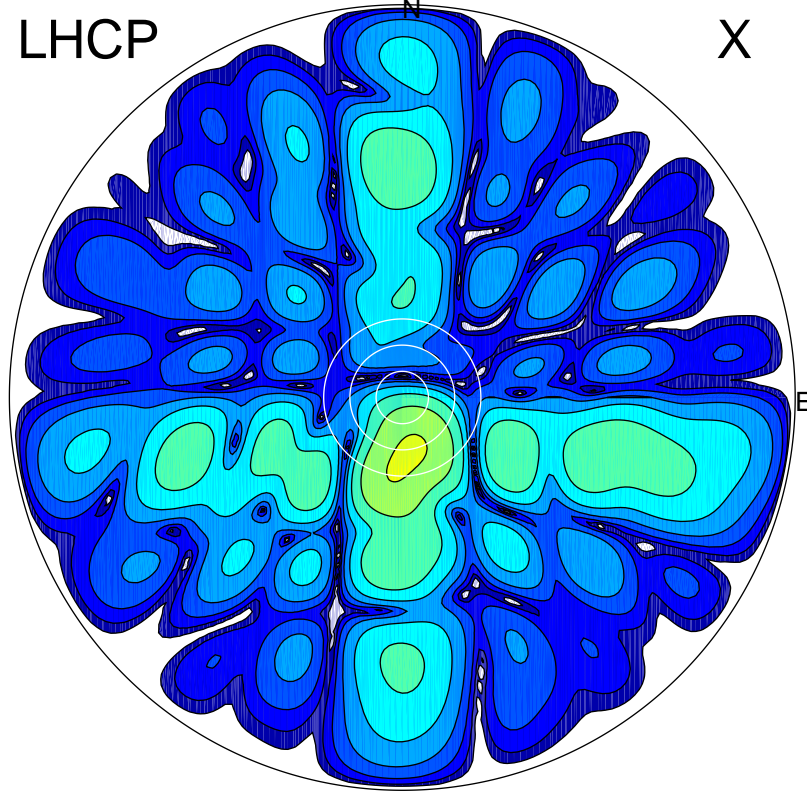


2019-10-18 12:47:00 A2 4.54400000 MHz 40.0 kW

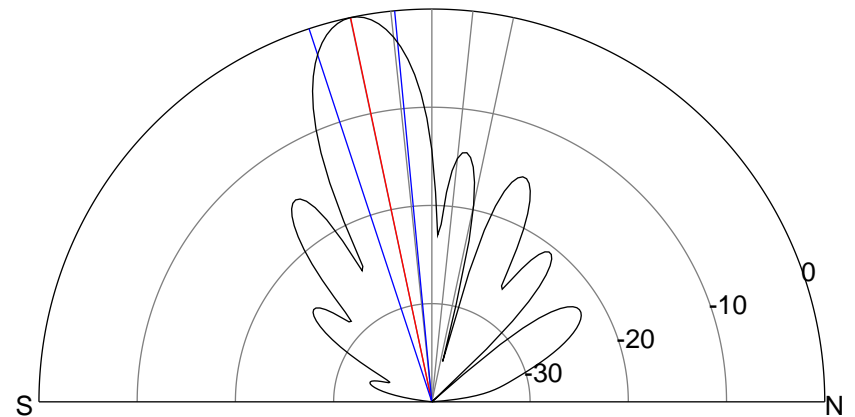
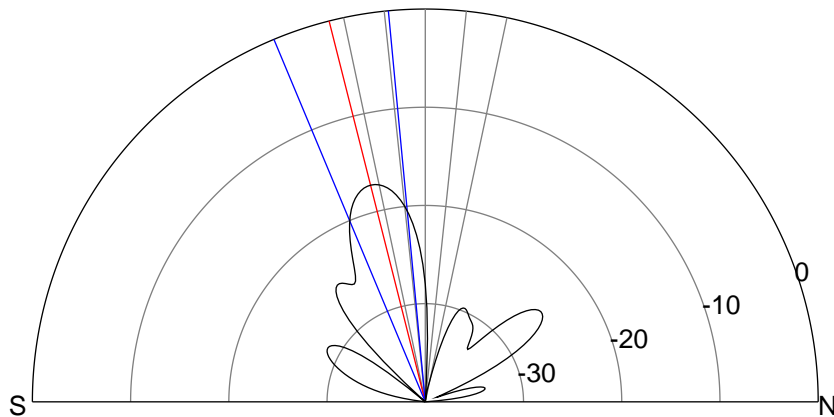
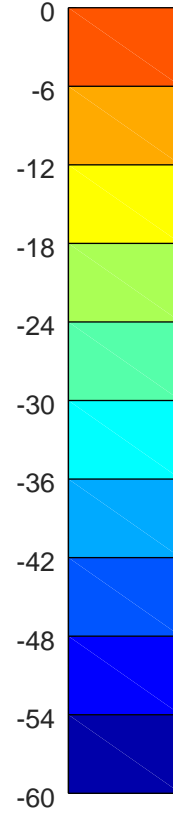
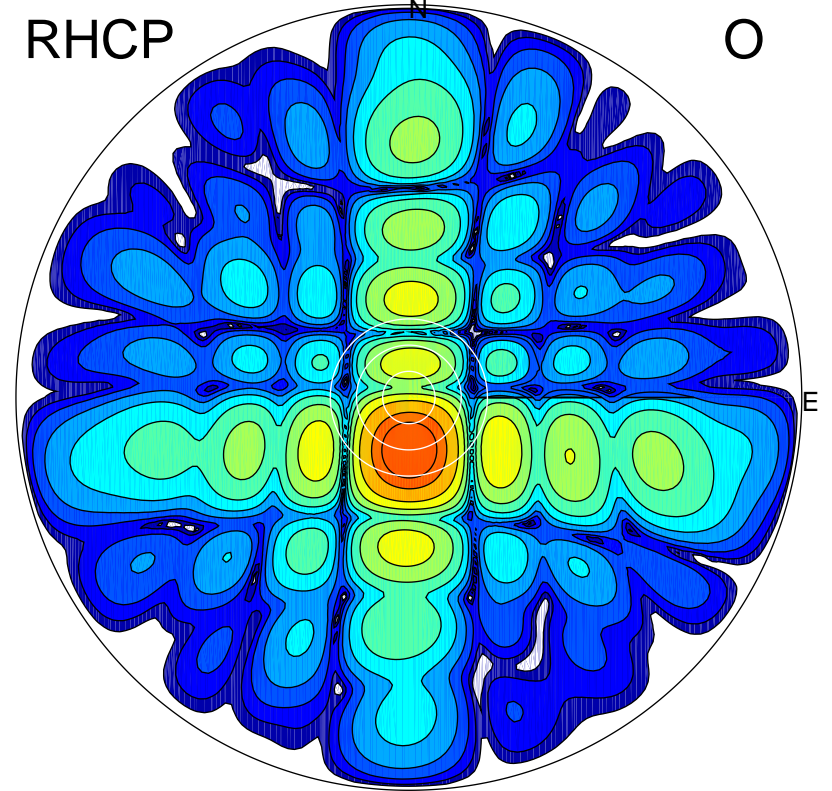
LHCP

X



RHCP

O



### ERP 0.2 MW

Peak gain 5.9 dBi at Az 172 Zen 13  
RHCP gain 22.8 dBi  
N-S peak 5.8 dBi at Zen -14.2  
N-S -3 dB beamwidth 17.3 deg.

### ERP 8.1 MW

Peak gain 23.0 dBi at Az 179 Zen 12  
LHCP gain 5.7 dBi  
N-S peak 23.0 dBi at Zen -11.9  
N-S -3 dB beamwidth 12.8 deg.