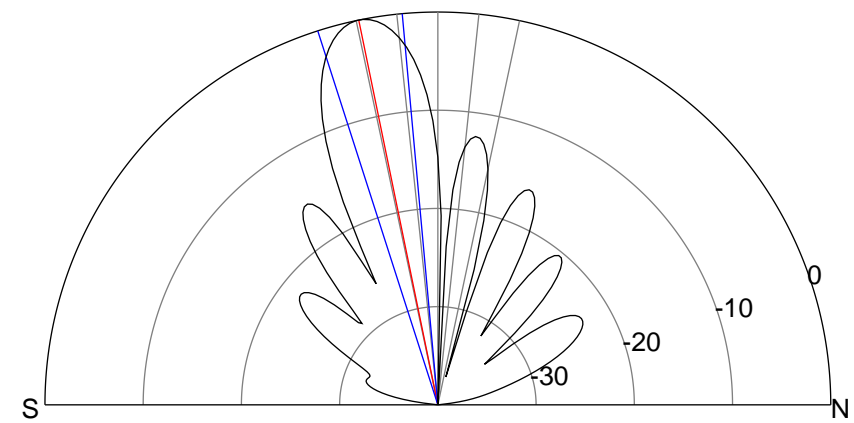
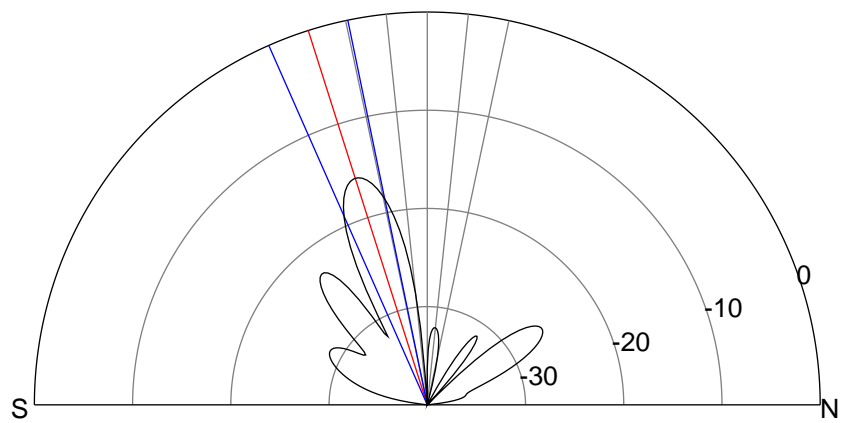
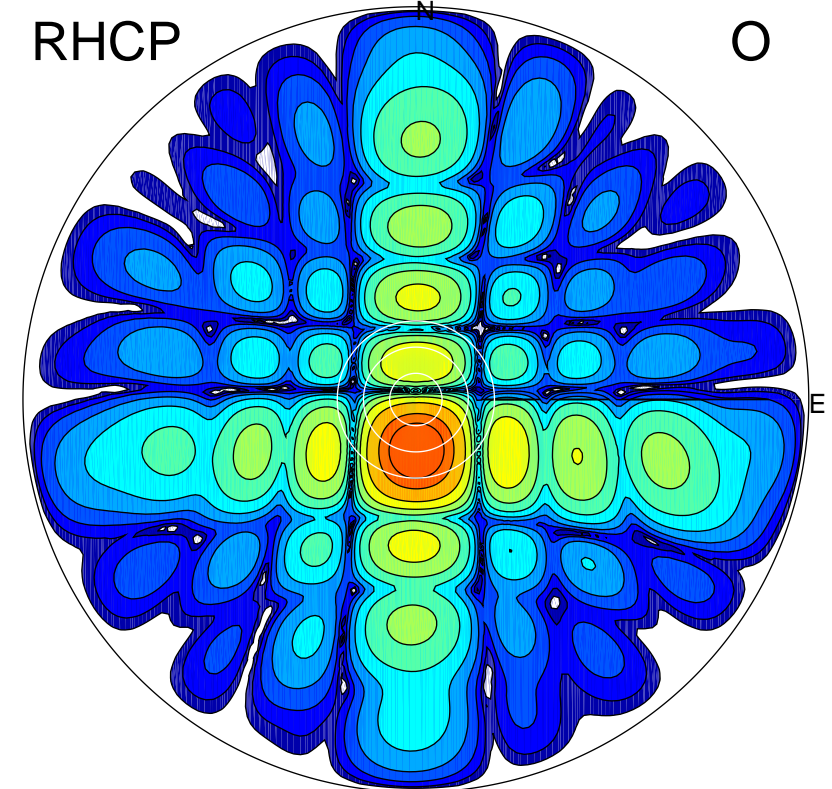
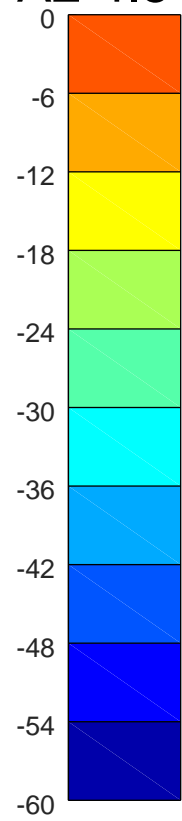
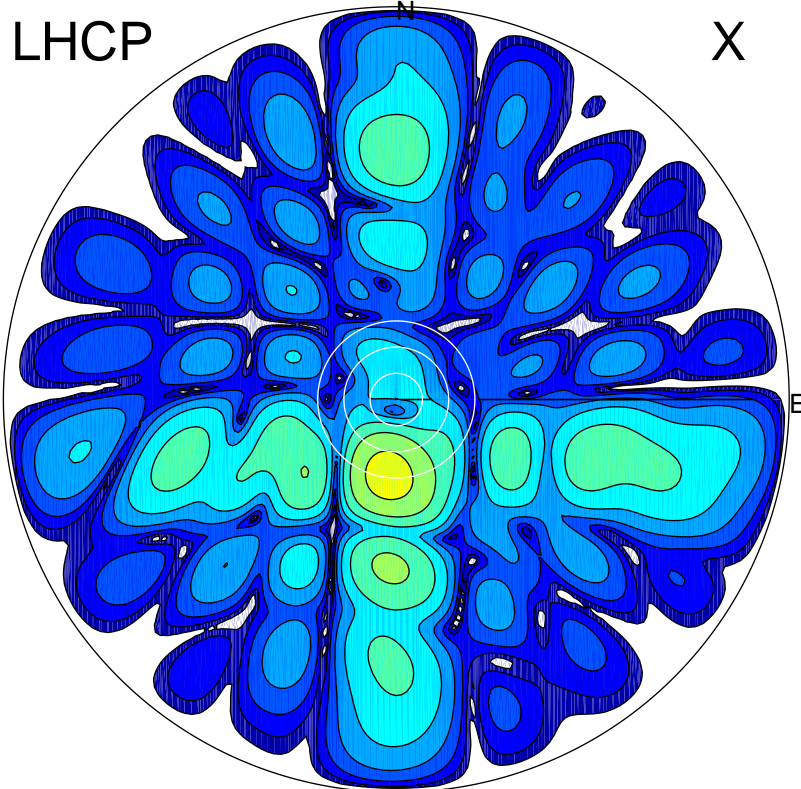


2019-10-18 11:01:50 A2 4.54400000 MHz 920.0 kW



### ERP 5.3 MW

Peak gain 7.6 dBi at Az 187 Zen 18  
RHCP gain 19.9 dBi  
N-S peak 7.3 dBi at Zen -17.6  
N-S -3 dB beamwidth 12.1 deg.

### ERP 187.8 MW

Peak gain 23.1 dBi at Az 179 Zen 12  
LHCP gain 4.7 dBi  
N-S peak 23.1 dBi at Zen -11.6  
N-S -3 dB beamwidth 12.6 deg.