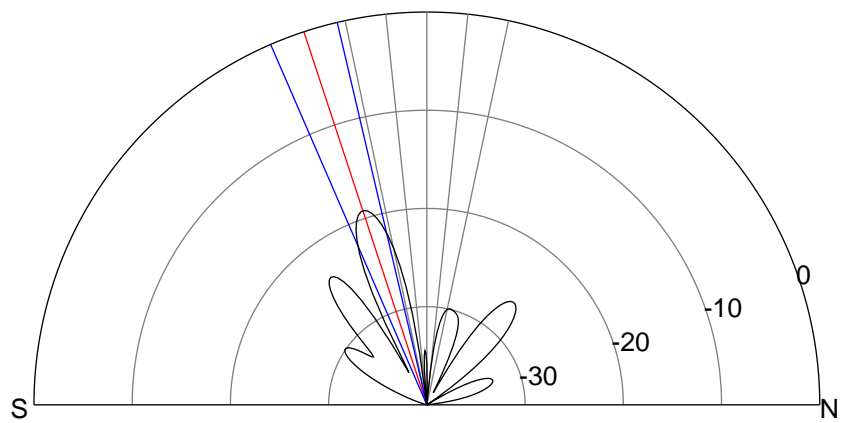
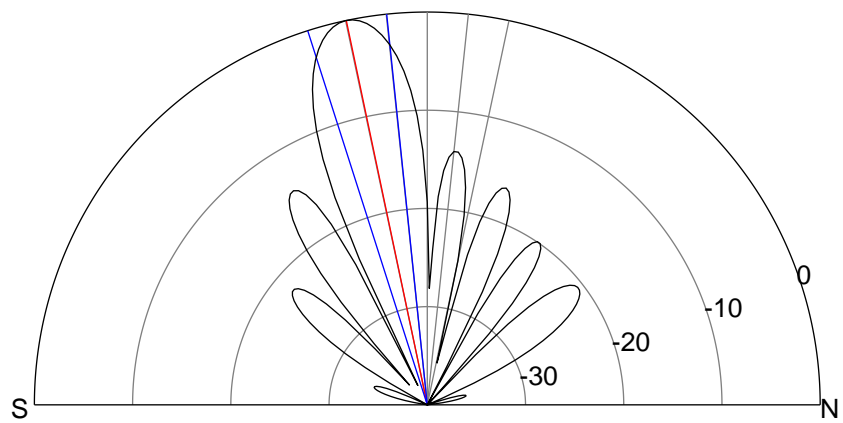
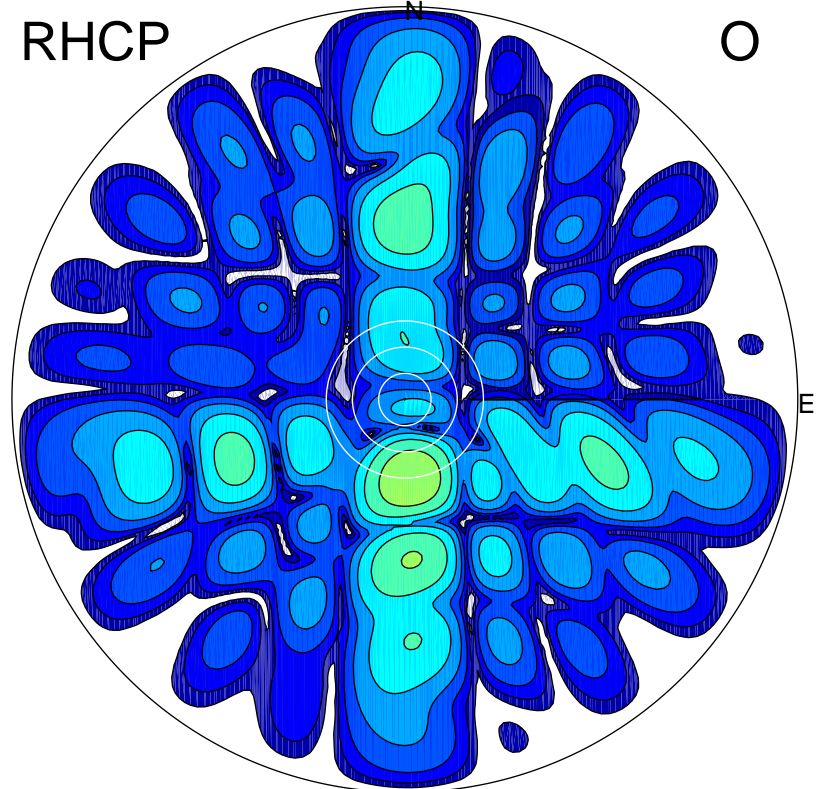
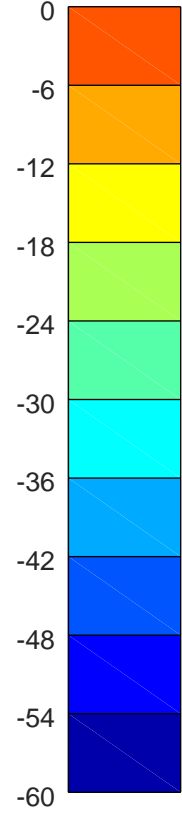
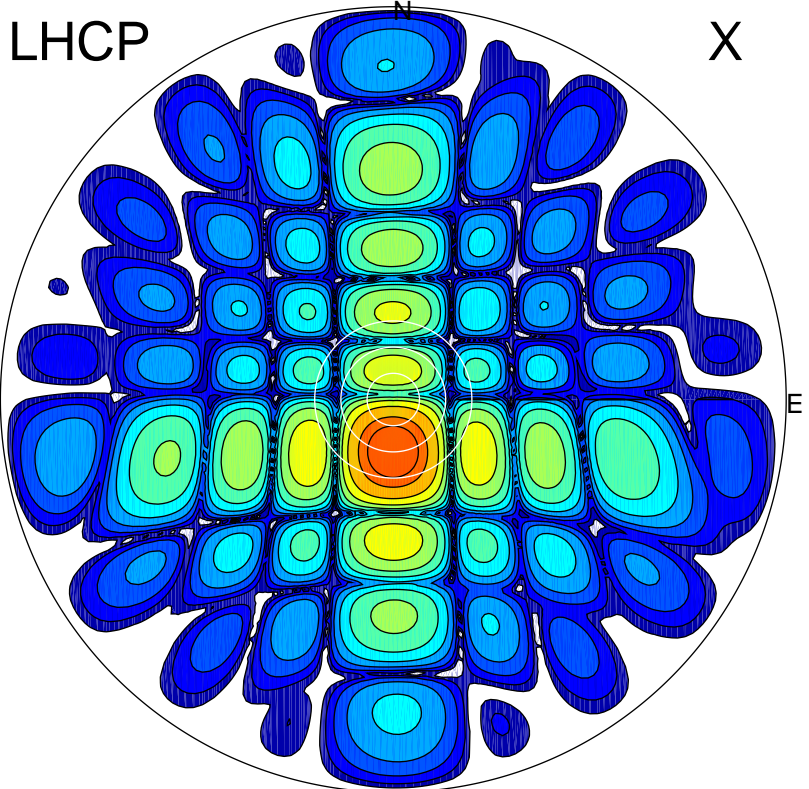


2019-10-17 12:27:00 A2 4.91280000 MHz 879.0 kW



### ERP 213.0 MW

Peak gain 23.8 dBi at Az 181 Zen 12  
RHCP gain 0.1 dBi  
N-S peak 23.8 dBi at Zen -11.9  
N-S -3 dB beamwidth 11.8 deg.

### ERP 2.7 MW

Peak gain 4.8 dBi at Az 175 Zen 18  
LHCP gain 20.6 dBi  
N-S peak 4.6 dBi at Zen -18.2  
N-S -3 dB beamwidth 10.2 deg.