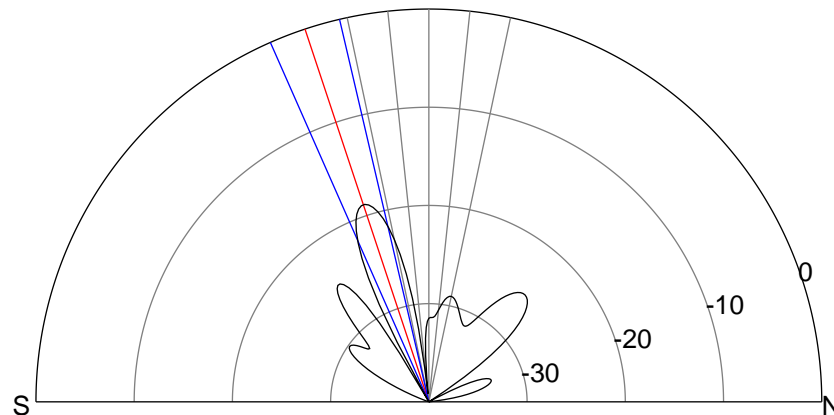
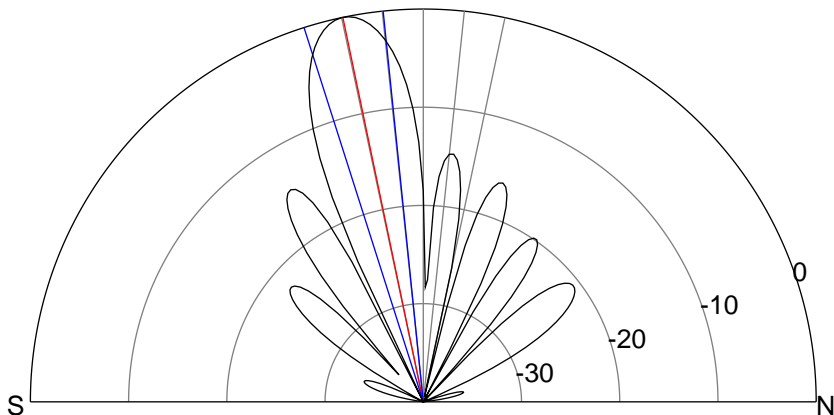
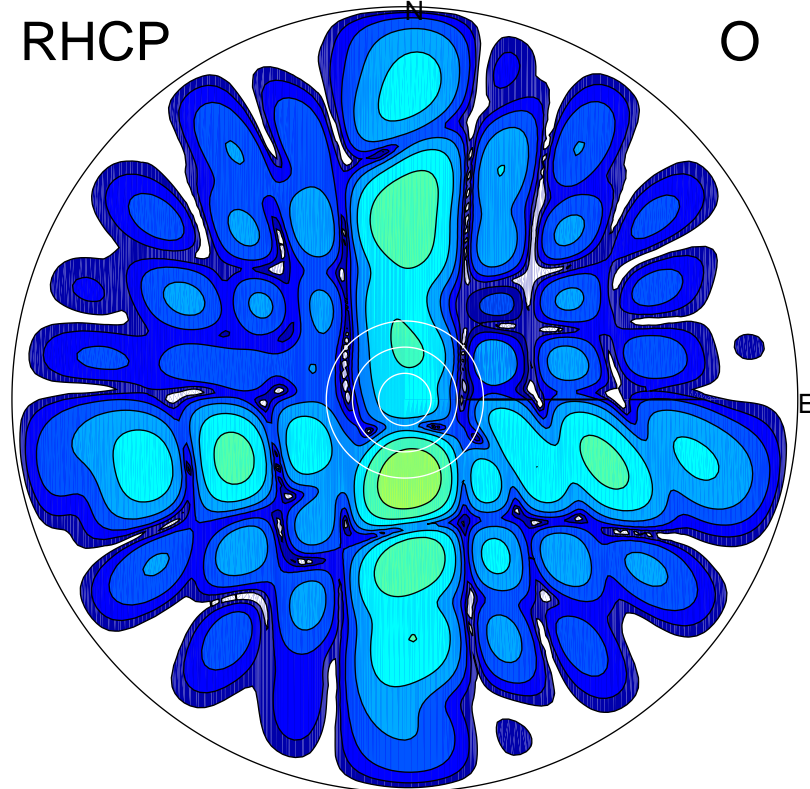
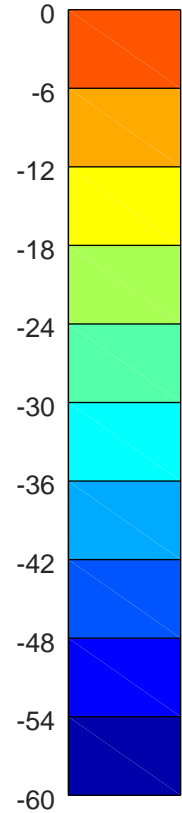
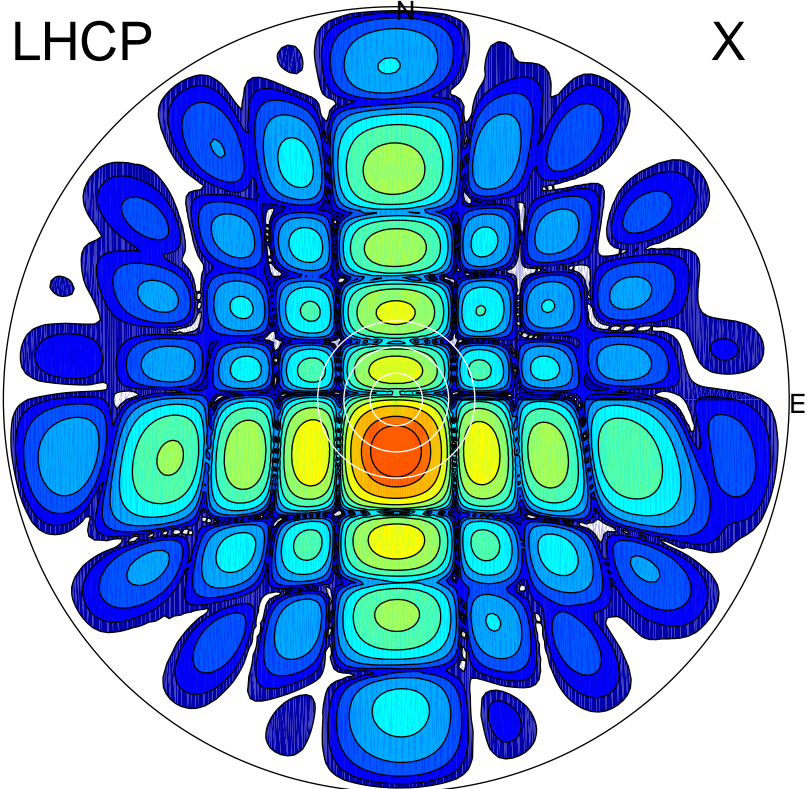


2019-10-17 12:23:00 A2 4.91280000 MHz 455.0 kW



### ERP 110.2 MW

Peak gain 23.8 dBi at Az 181 Zen 12  
RHCP gain 0.7 dBi  
N-S peak 23.8 dBi at Zen -11.8  
N-S -3 dB beamwidth 11.8 deg.

### ERP 1.5 MW

Peak gain 5.2 dBi at Az 176 Zen 18  
LHCP gain 20.5 dBi  
N-S peak 5.0 dBi at Zen -18.4  
N-S -3 dB beamwidth 10.7 deg.