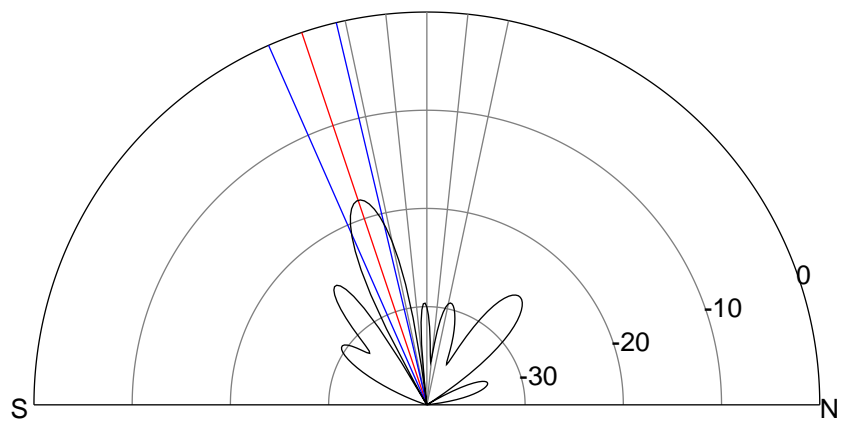
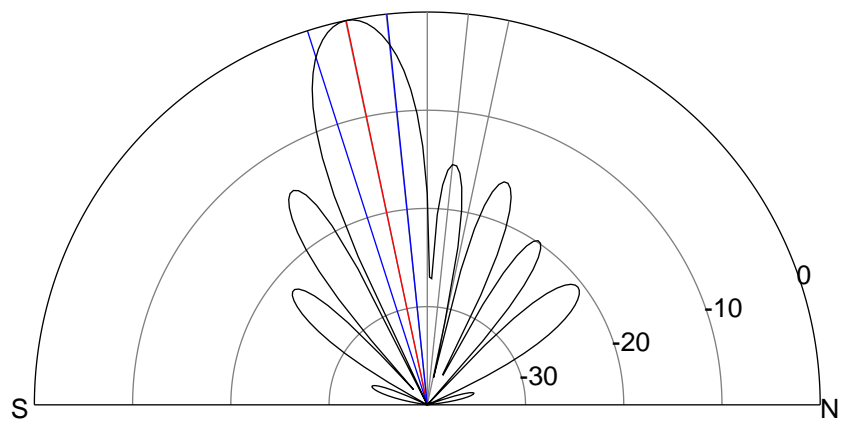
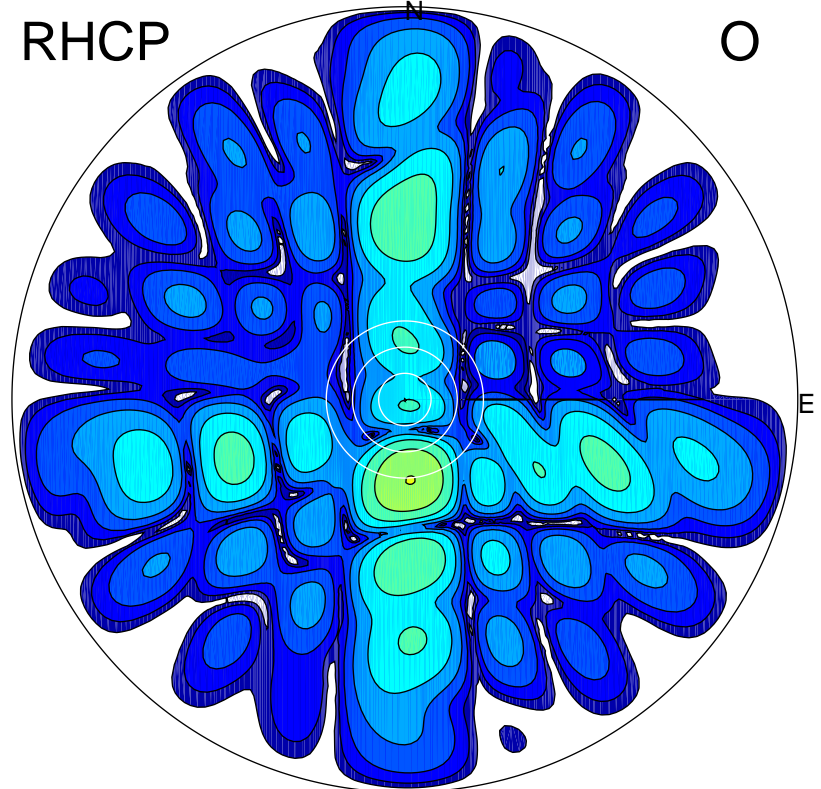
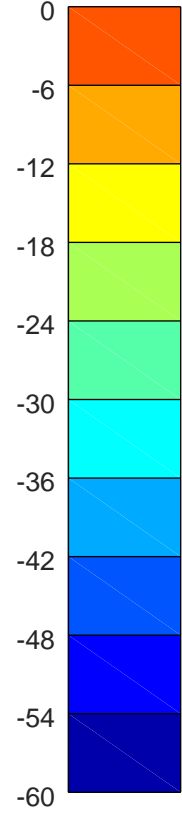
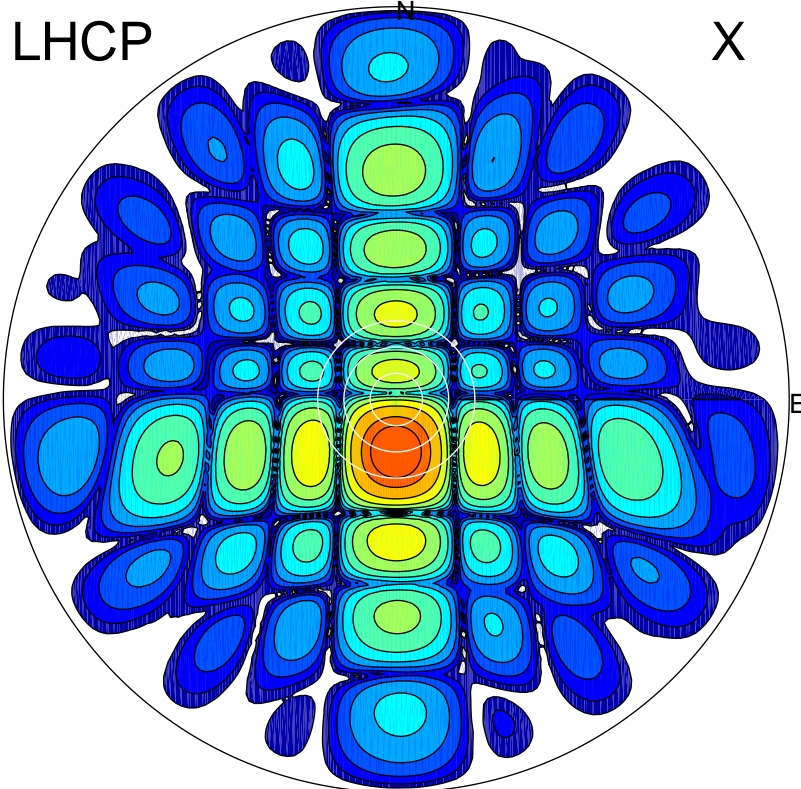


2019-10-17 12:21:00 A2 4.91280000 MHz 222.0 kW



ERP 53.5 MW

Peak gain 23.8 dBi at Az 181 Zen 12
RHCP gain 0.7 dBi
N-S peak 23.8 dBi at Zen -11.9
N-S -3 dB beamwidth 11.9 deg.

ERP 0.9 MW

Peak gain 5.9 dBi at Az 176 Zen 19
LHCP gain 19.4 dBi
N-S peak 5.8 dBi at Zen -18.6
N-S -3 dB beamwidth 10.4 deg.