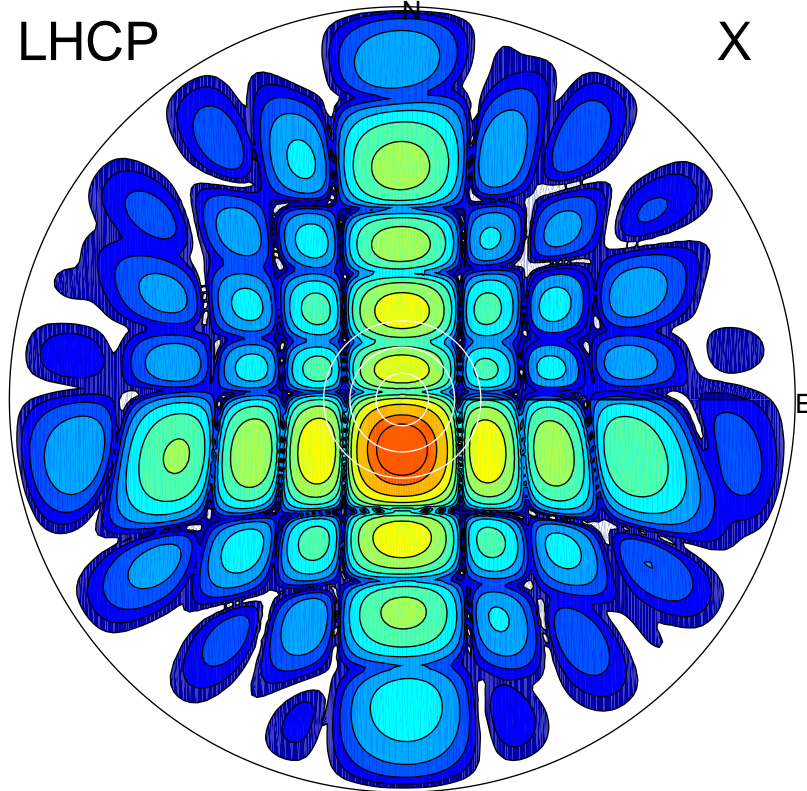


2019-10-17 12:19:01 A2 4.91280000 MHz 84.0 kW

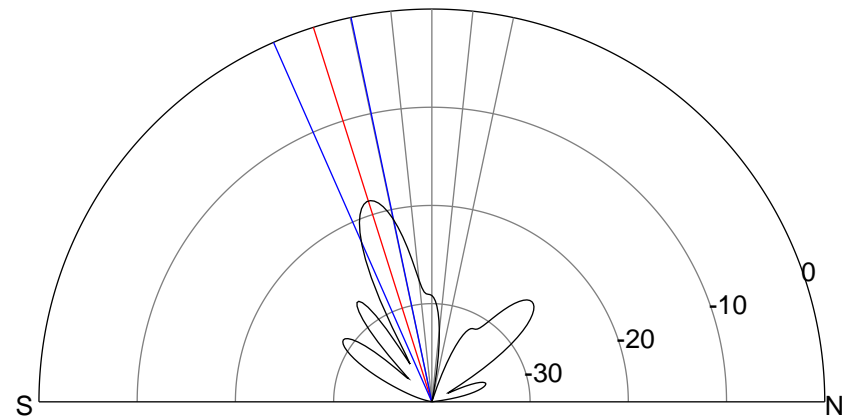
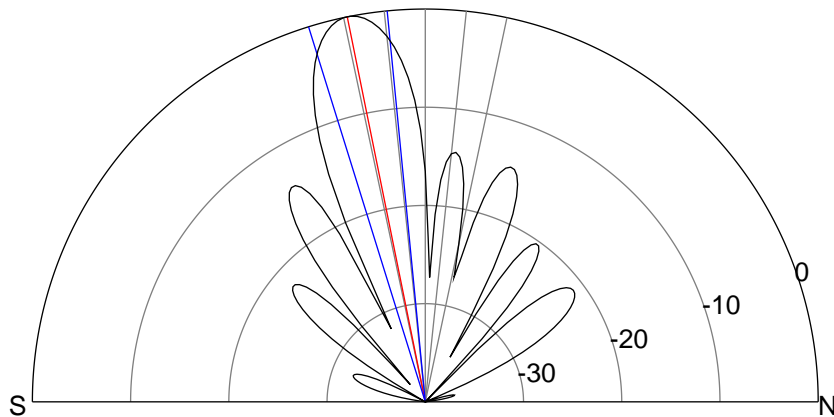
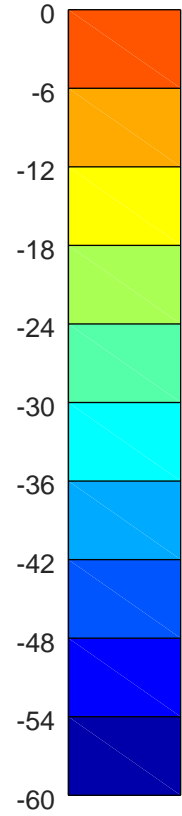
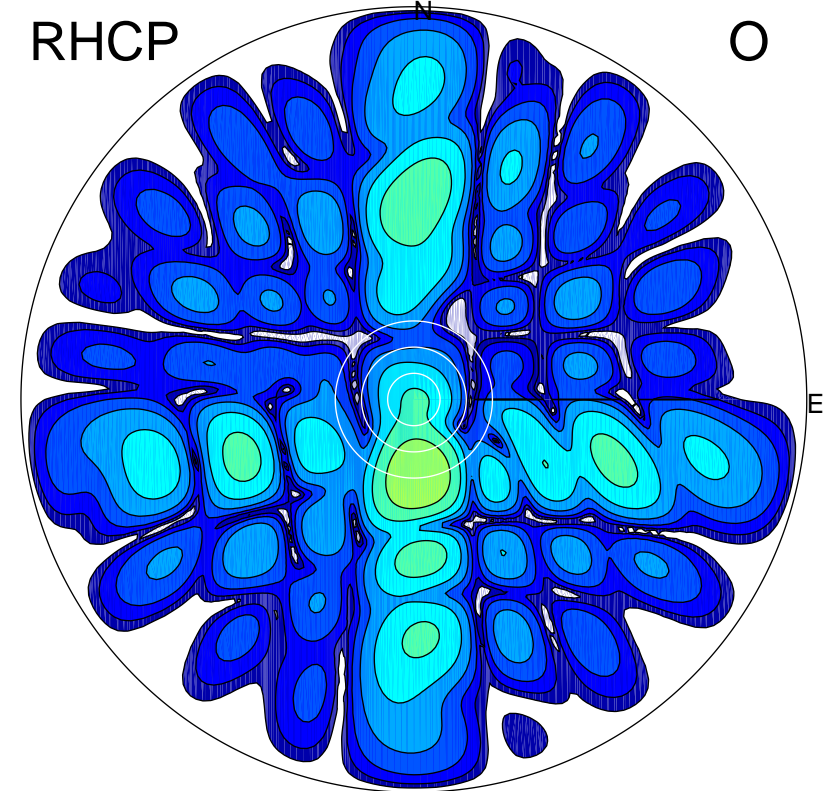
LHCP

X



RHCP

O



ERP 20.2 MW

Peak gain 23.8 dBi at Az 182 Zen 11
RHCP gain 1.9 dBi
N-S peak 23.8 dBi at Zen -11.5
N-S -3 dB beamwidth 11.7 deg.

ERP 0.3 MW

Peak gain 5.4 dBi at Az 176 Zen 18
LHCP gain 20.0 dBi
N-S peak 5.3 dBi at Zen -17.6
N-S -3 dB beamwidth 11.9 deg.