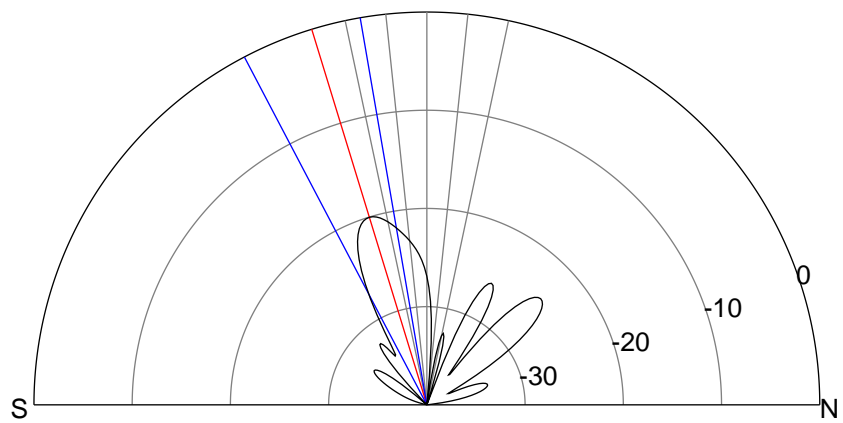
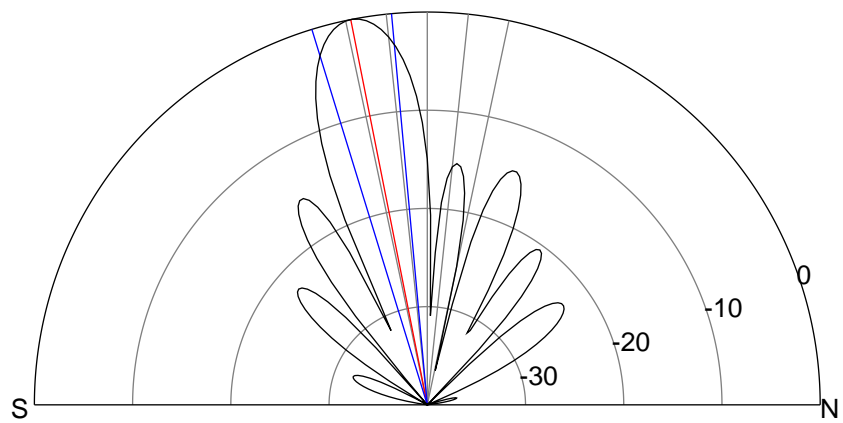
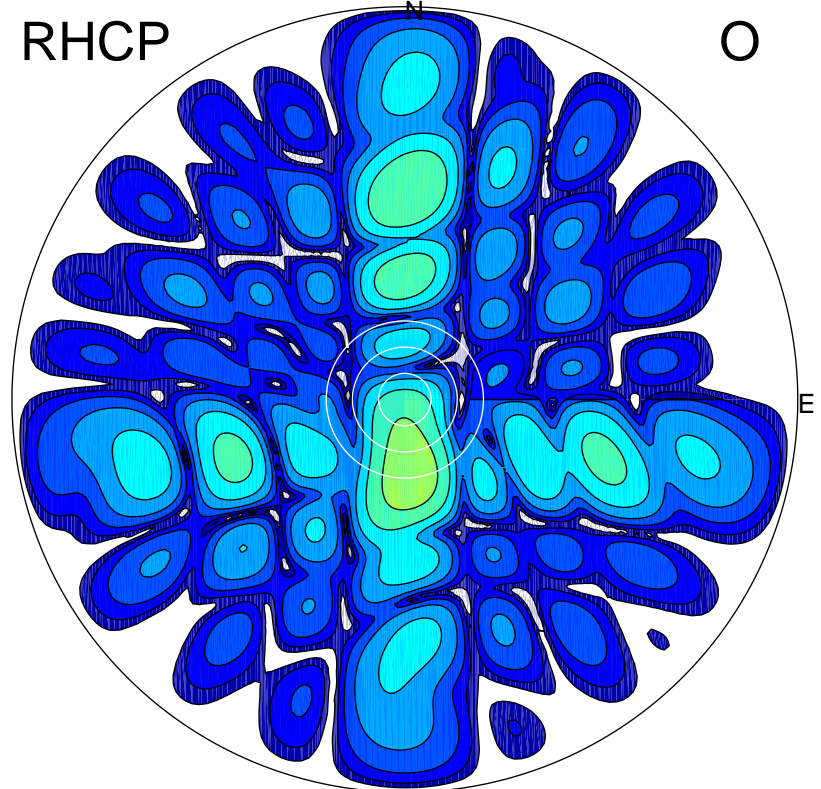
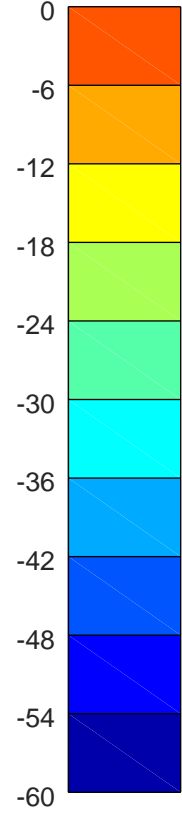
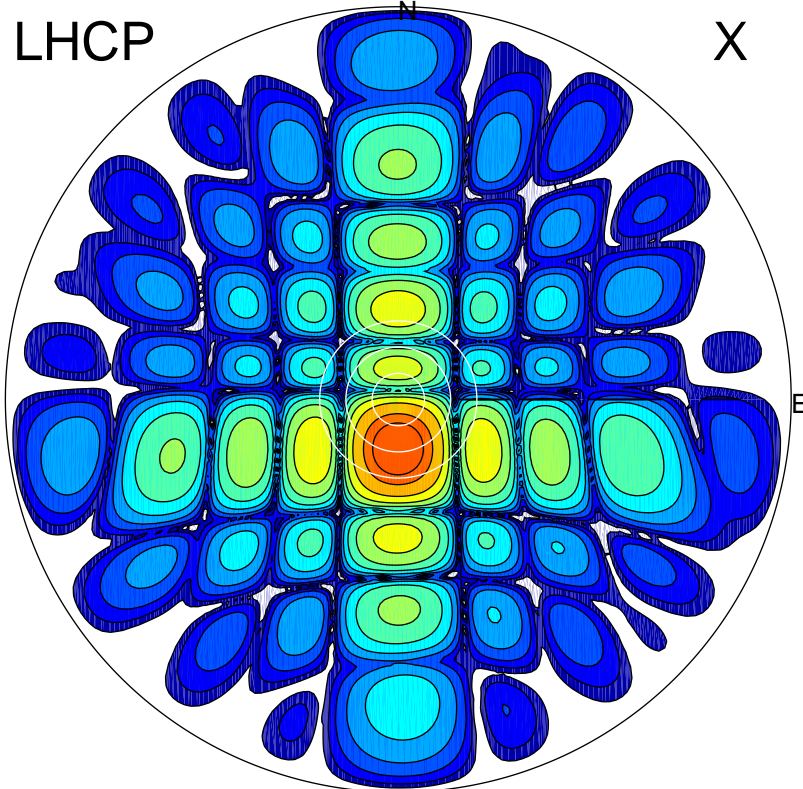


2019-10-17 12:17:00 A2 4.91280000 MHz 41.0 kW



ERP 9.9 MW

Peak gain 23.8 dBi at Az 181 Zen 11
RHCP gain 2.5 dBi
N-S peak 23.8 dBi at Zen -11.2
N-S -3 dB beamwidth 11.9 deg.

ERP 0.1 MW

Peak gain 4.0 dBi at Az 175 Zen 17
LHCP gain 21.0 dBi
N-S peak 3.8 dBi at Zen -17.0
N-S -3 dB beamwidth 17.9 deg.