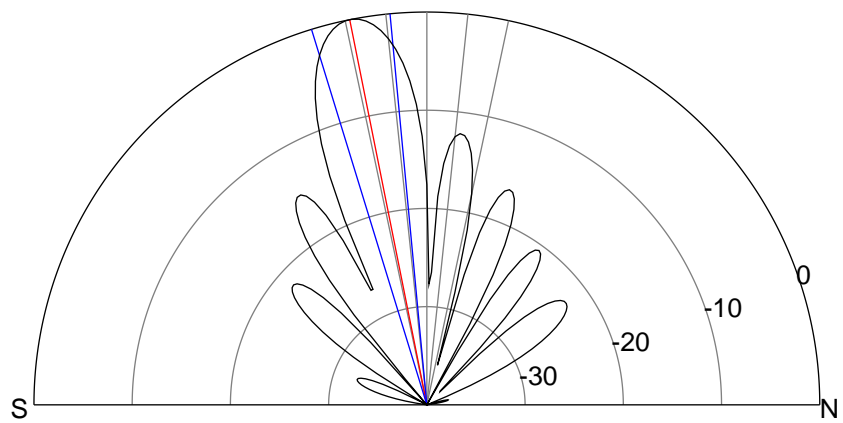
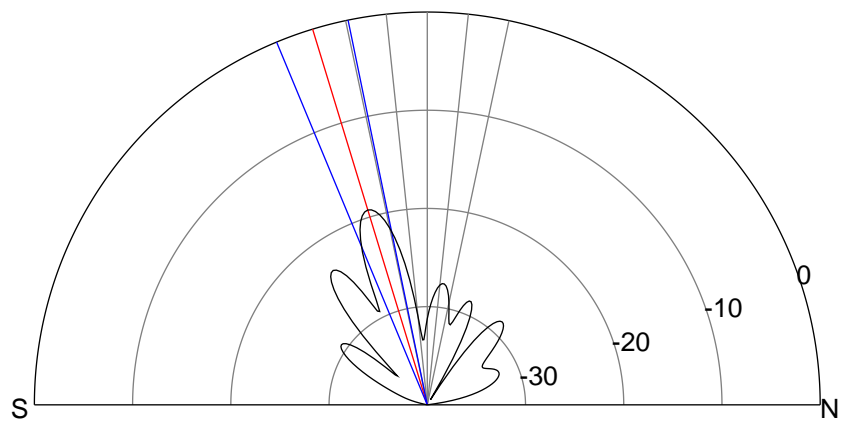
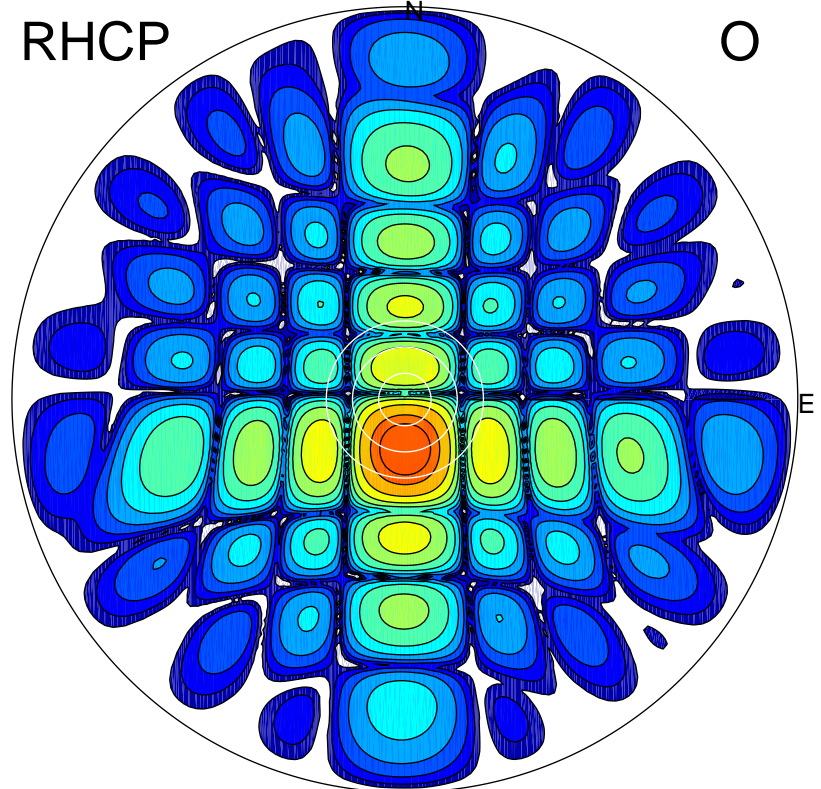
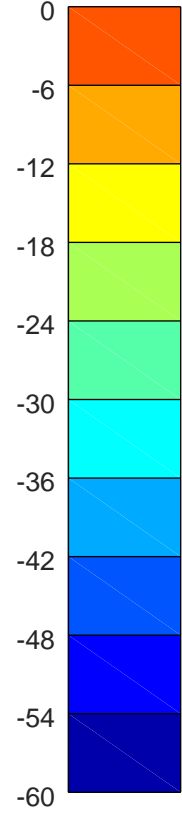
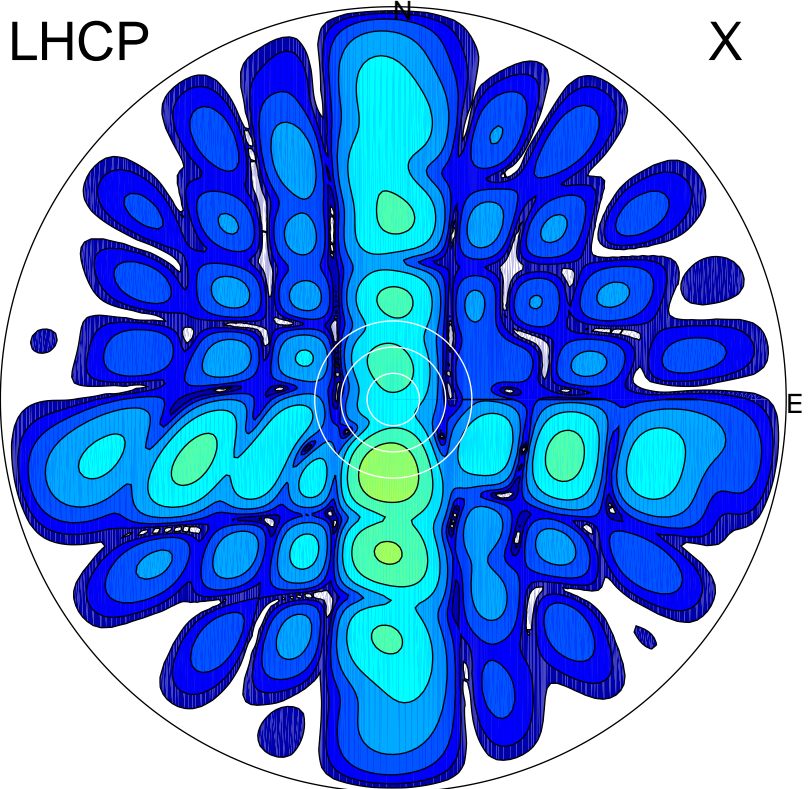


2019-10-17 12:12:00 A2 4.91280000 MHz 862.0 kW



### ERP 2.6 MW

Peak gain 4.7 dBi at Az 185 Zen 17  
RHCP gain 21.0 dBi  
N-S peak 4.6 dBi at Zen -17.0  
N-S -3 dB beamwidth 10.9 deg.

### ERP 208.7 MW

Peak gain 23.8 dBi at Az 178 Zen 11  
LHCP gain 1.1 dBi  
N-S peak 23.8 dBi at Zen -11.3  
N-S -3 dB beamwidth 11.7 deg.