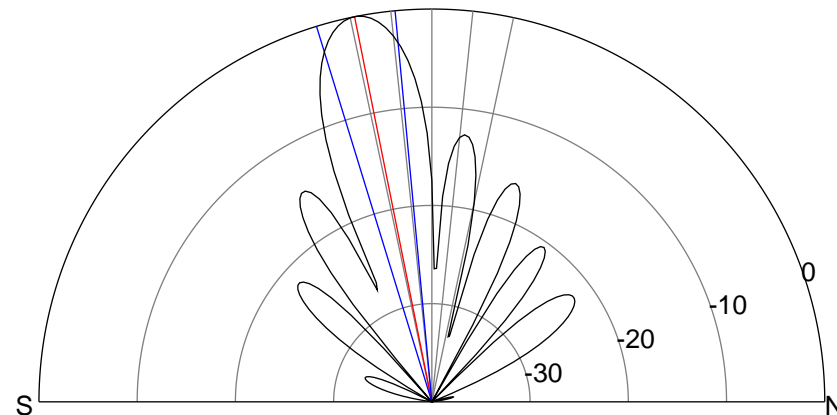
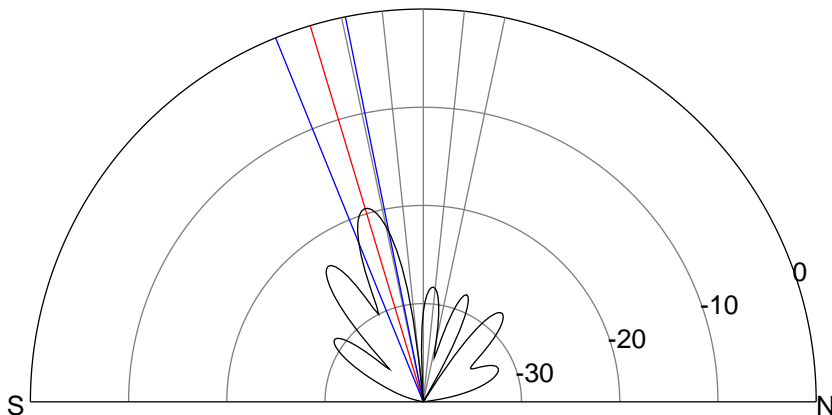
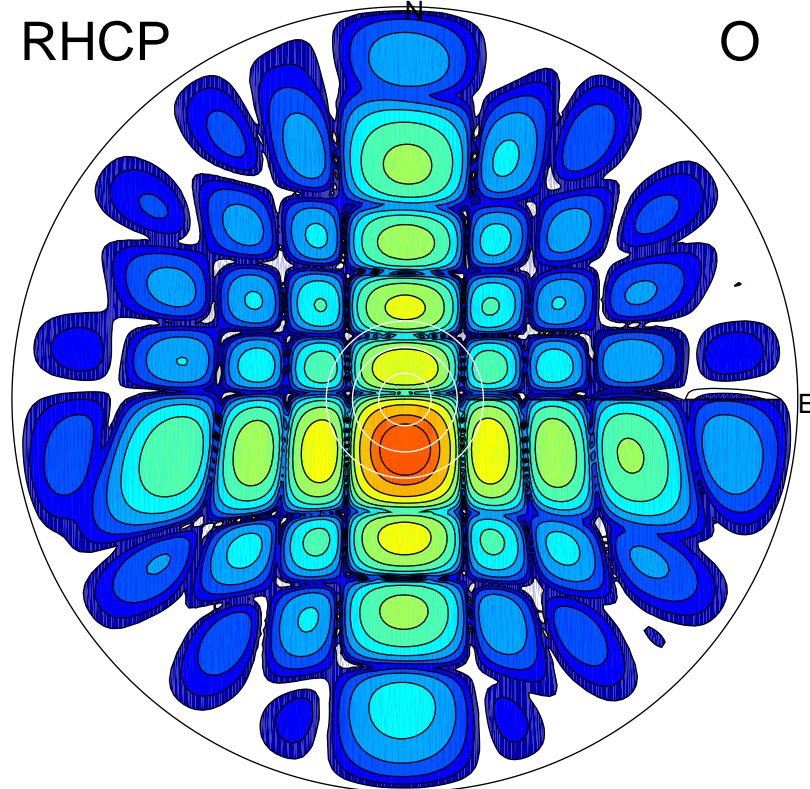
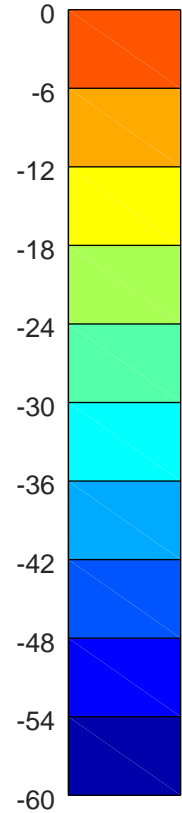
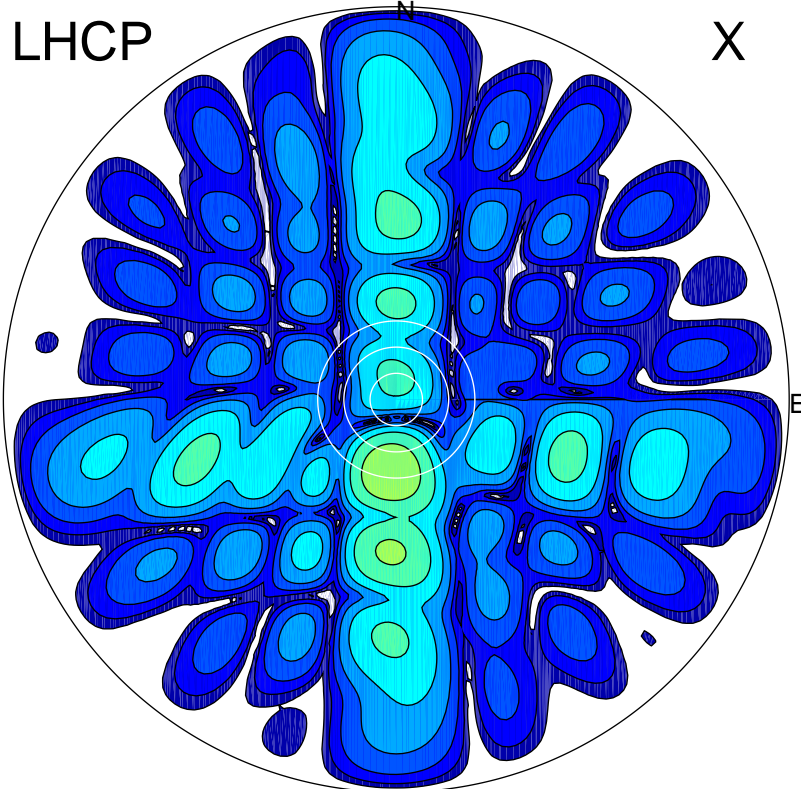


2019-10-17 12:10:00 A2 4.91280000 MHz 658.0 kW



ERP 1.9 MW

Peak gain 4.6 dBi at Az 185 Zen 17
RHCP gain 21.1 dBi
N-S peak 4.4 dBi at Zen -16.7
N-S -3 dB beamwidth 10.6 deg.

ERP 159.3 MW

Peak gain 23.8 dBi at Az 179 Zen 11
LHCP gain 0.9 dBi
N-S peak 23.9 dBi at Zen -11.3
N-S -3 dB beamwidth 11.7 deg.