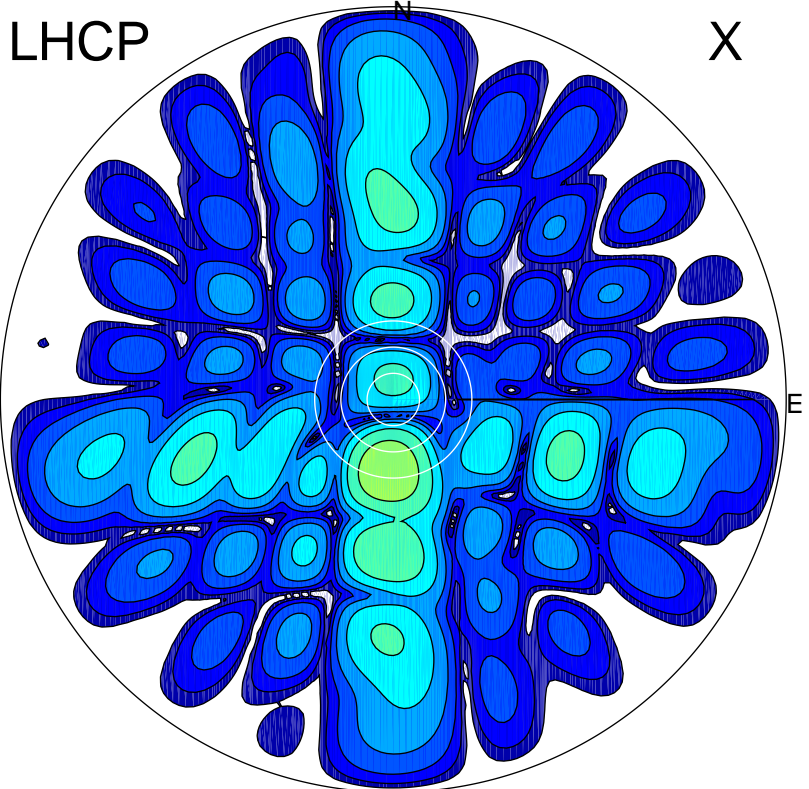
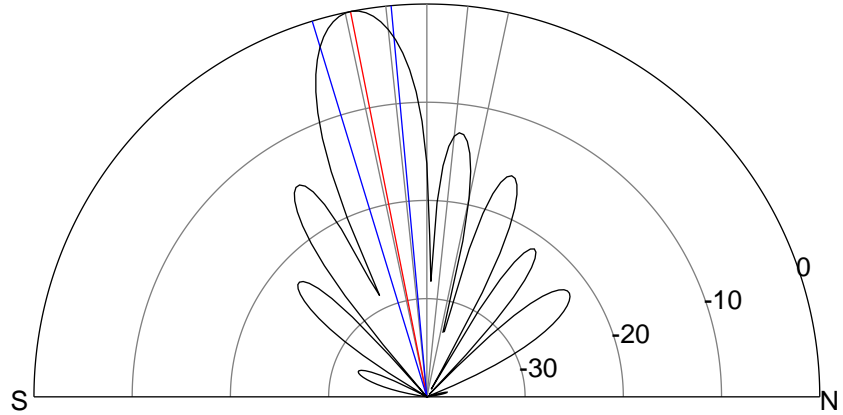
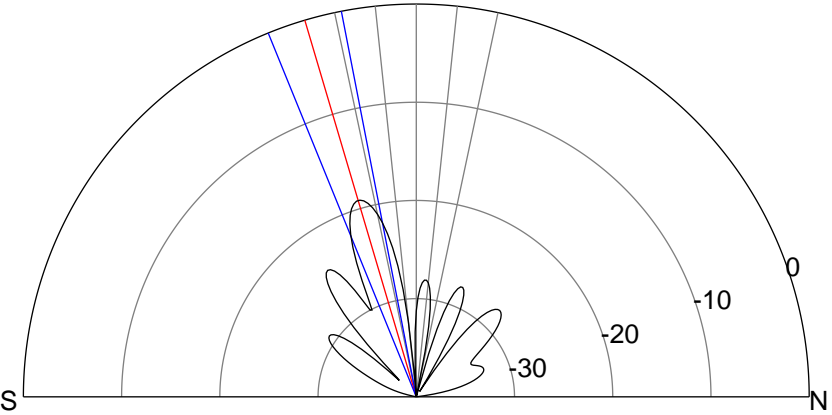
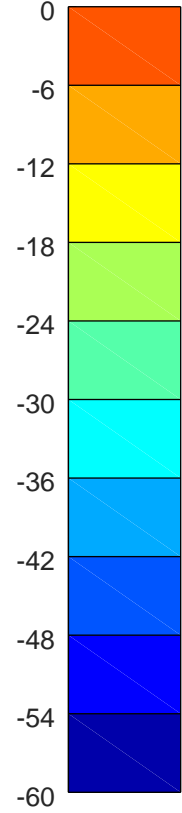
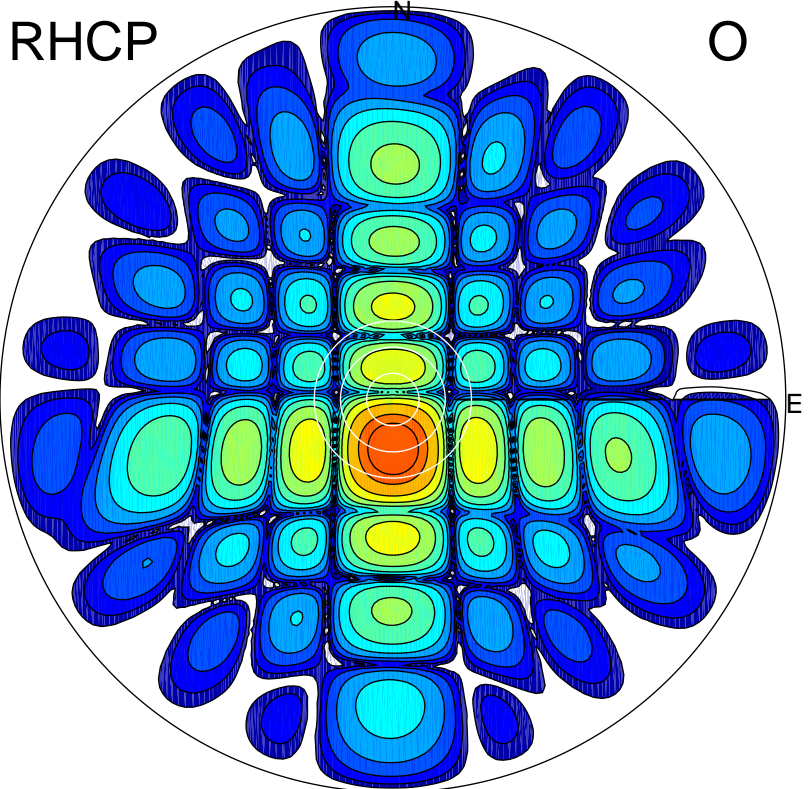


2019-10-17 12:08:00 A2 4.91280000 MHz 427.0 kW

LHCP



RHCP



### ERP 1.3 MW

Peak gain 4.8 dBi at Az 184 Zen 16  
RHCP gain 21.9 dBi  
N-S peak 4.7 dBi at Zen -16.5  
N-S -3 dB beamwidth 11.1 deg.

### ERP 103.5 MW

Peak gain 23.8 dBi at Az 179 Zen 11  
LHCP gain 1.9 dBi  
N-S peak 23.8 dBi at Zen -11.2  
N-S -3 dB beamwidth 11.7 deg.