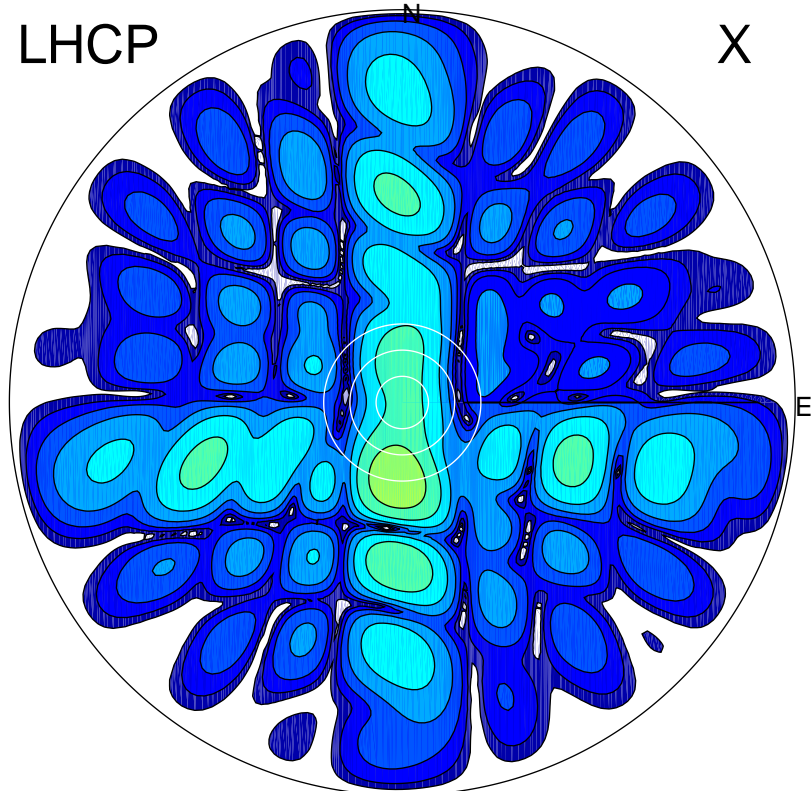


2019-10-17 12:04:00 A2 4.91280000 MHz 80.0 kW

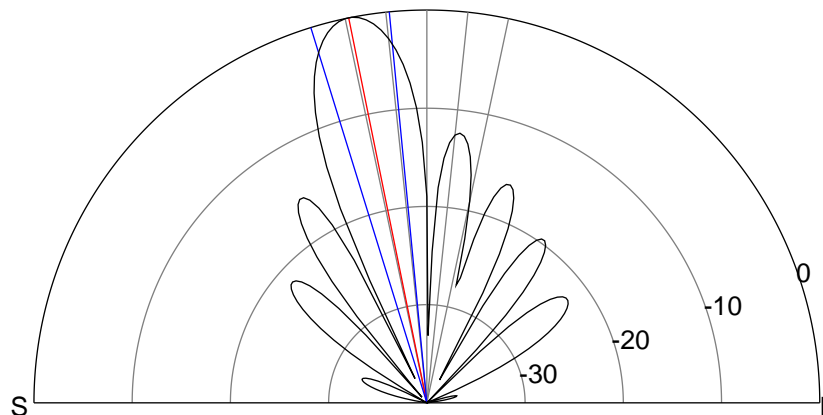
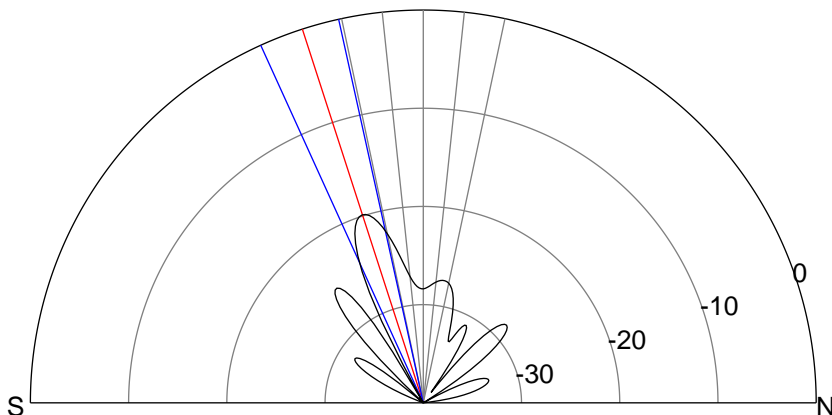
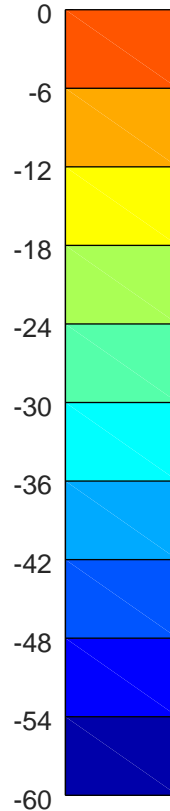
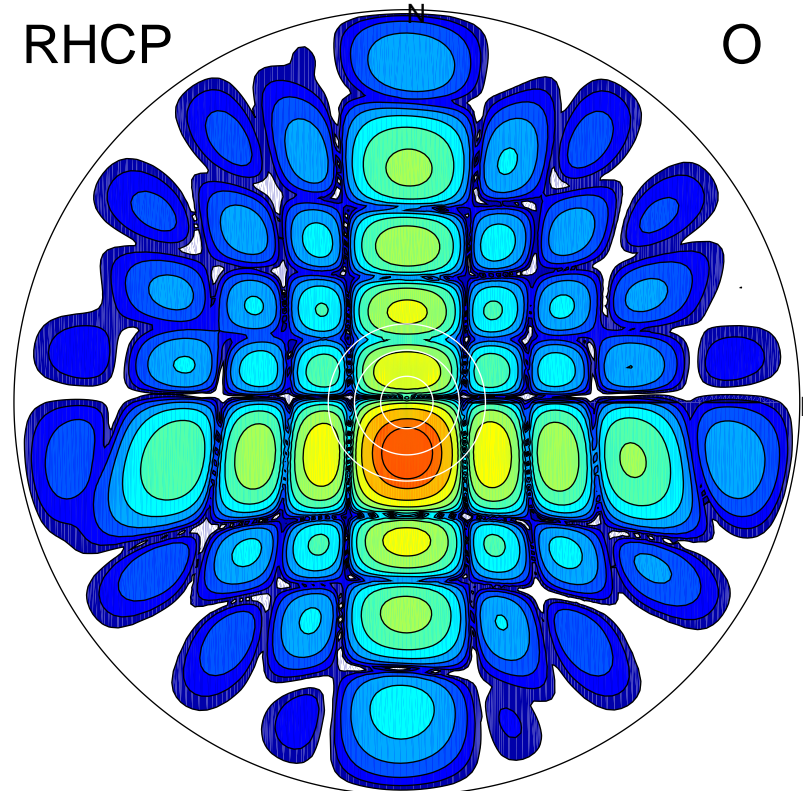
LHCP

X



RHCP

O



ERP 0.2 MW

Peak gain 4.1 dBi at Az 185 Zen 18
RHCP gain 20.2 dBi
N-S peak 4.0 dBi at Zen -17.9
N-S -3 dB beamwidth 12.0 deg.

ERP 19.4 MW

Peak gain 23.8 dBi at Az 179 Zen 11
LHCP gain 0.6 dBi
N-S peak 23.9 dBi at Zen -11.5
N-S -3 dB beamwidth 11.7 deg.