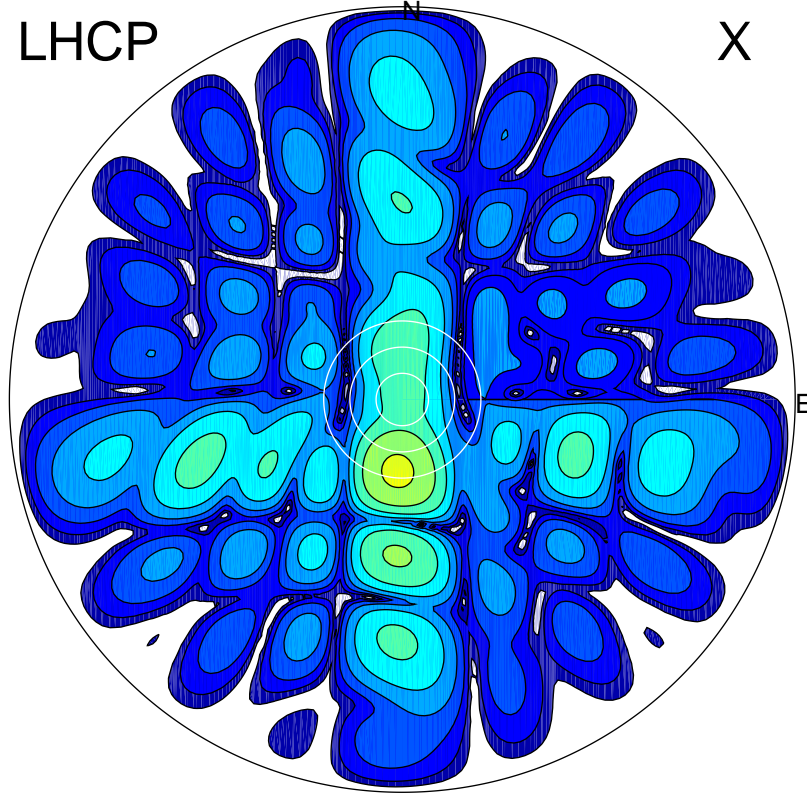


2019-10-17 12:02:00 A2 4.91280000 MHz 38.0 kW

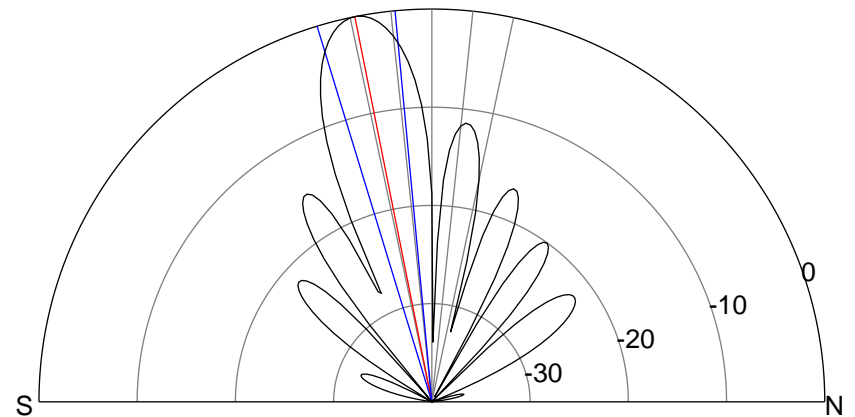
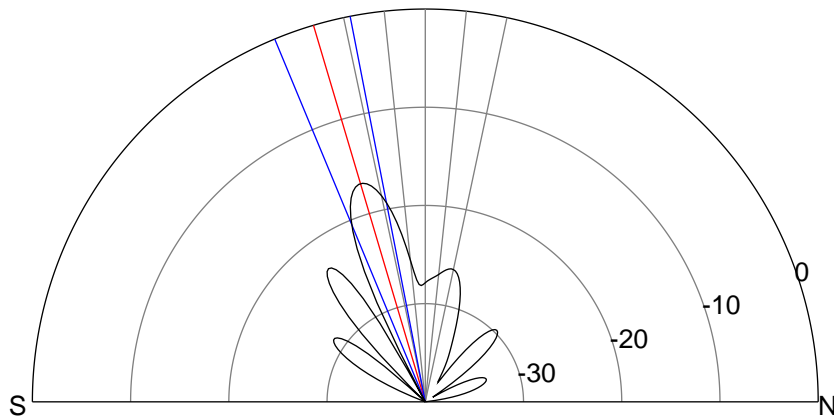
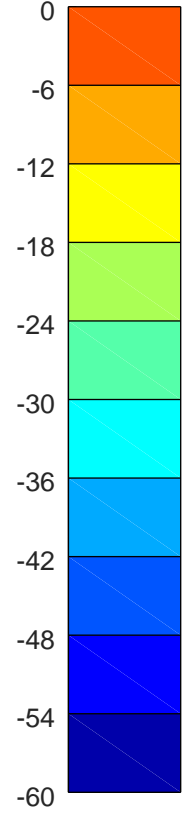
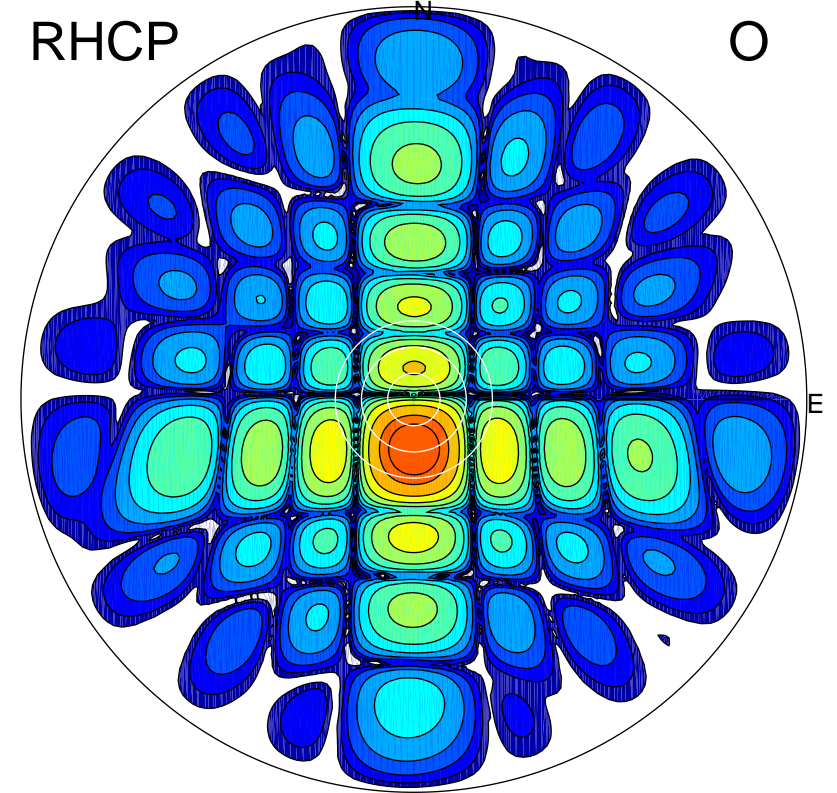
LHCP

X



RHCP

O



ERP 0.2 MW

Peak gain 7.1 dBi at Az 184 Zen 17
RHCP gain 21.0 dBi
N-S peak 7.0 dBi at Zen -16.5
N-S -3 dB beamwidth 11.5 deg.

ERP 9.1 MW

Peak gain 23.8 dBi at Az 179 Zen 11
LHCP gain 4.4 dBi
N-S peak 23.8 dBi at Zen -11.3
N-S -3 dB beamwidth 11.6 deg.