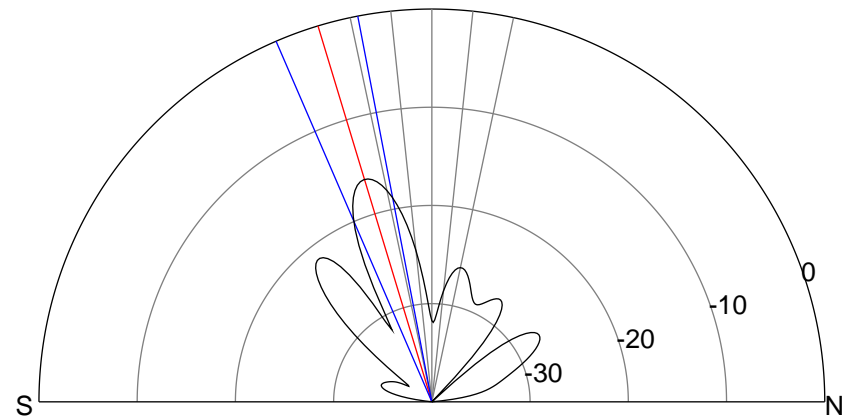
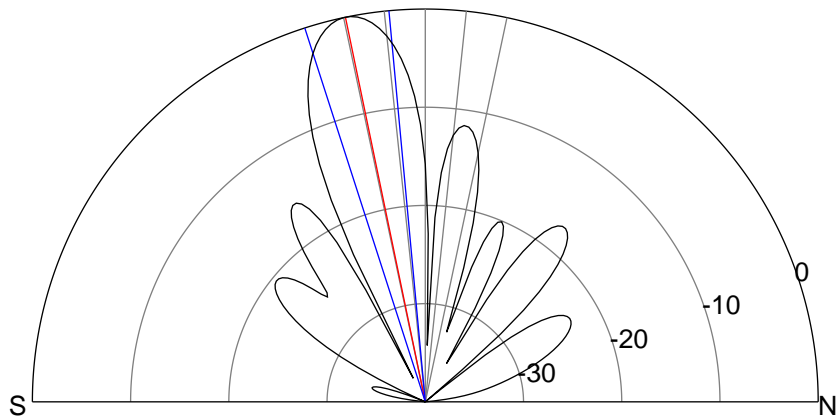
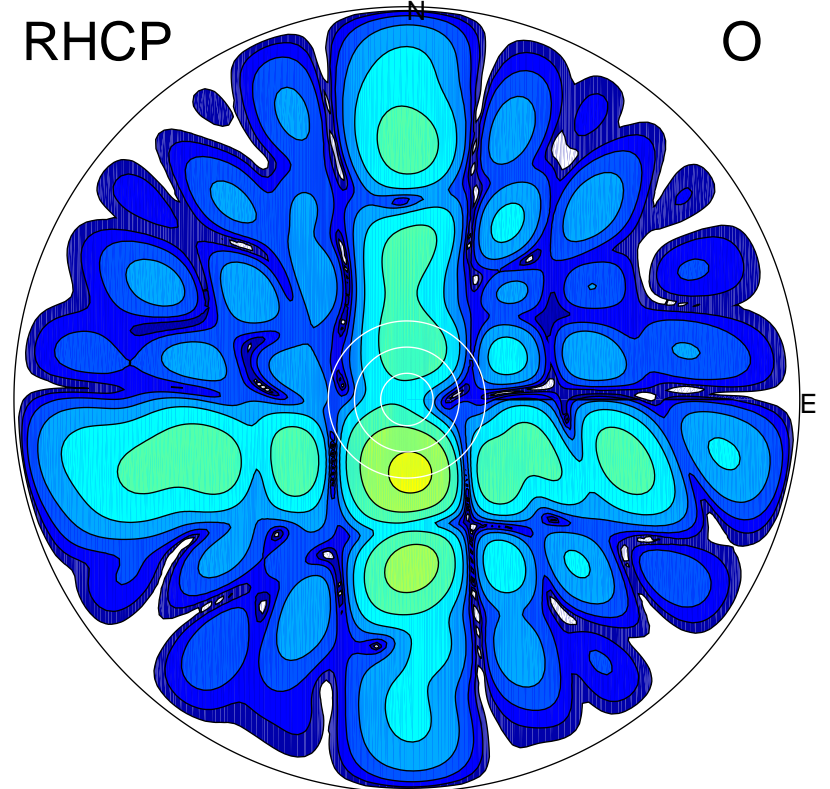
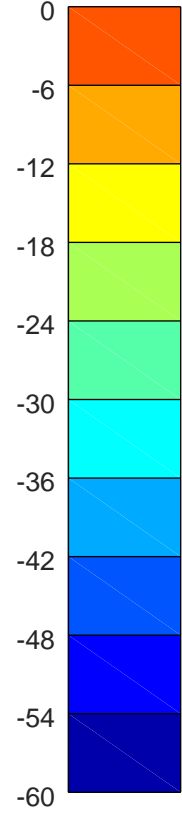
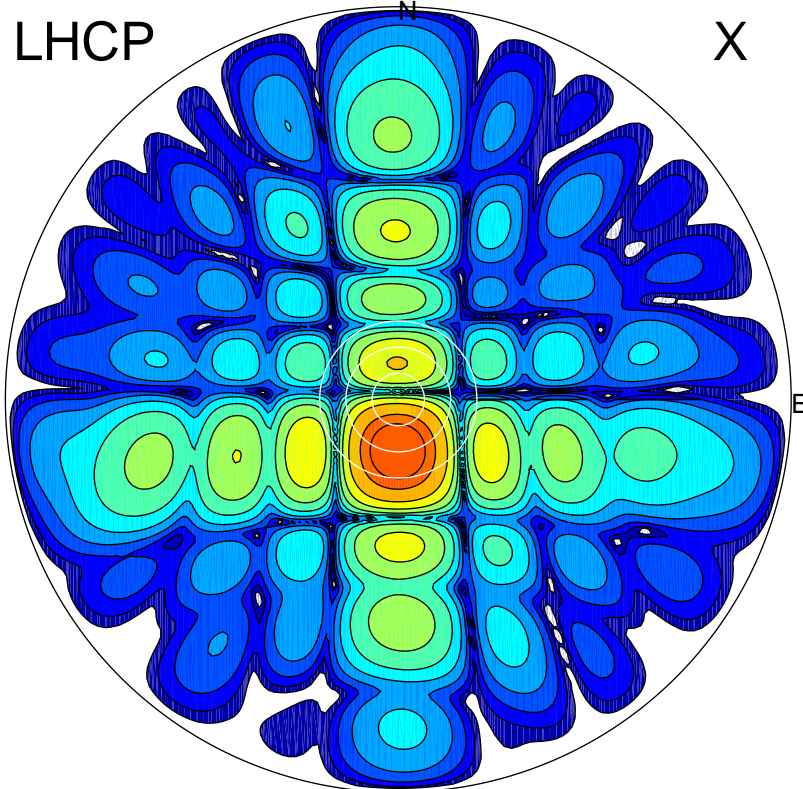


2019-10-17 11:18:10 A2 4.54400000 MHz 901.0 kW



### ERP 182.5 MW

Peak gain 23.1 dBi at Az 182 Zen 12  
RHCP gain 5.0 dBi  
N-S peak 23.1 dBi at Zen -11.7  
N-S -3 dB beamwidth 12.6 deg.

### ERP 4.3 MW

Peak gain 6.8 dBi at Az 176 Zen 17  
LHCP gain 21.0 dBi  
N-S peak 6.7 dBi at Zen -16.8  
N-S -3 dB beamwidth 12.5 deg.