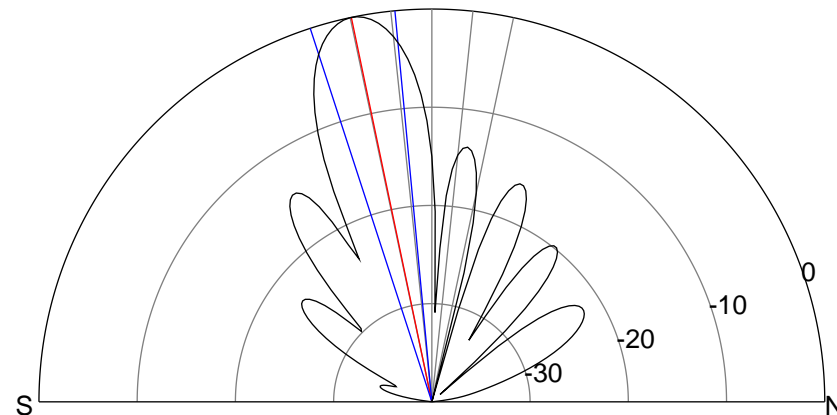
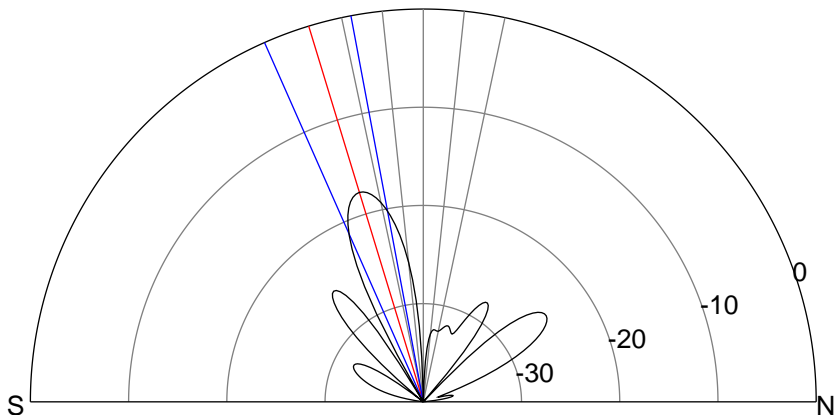
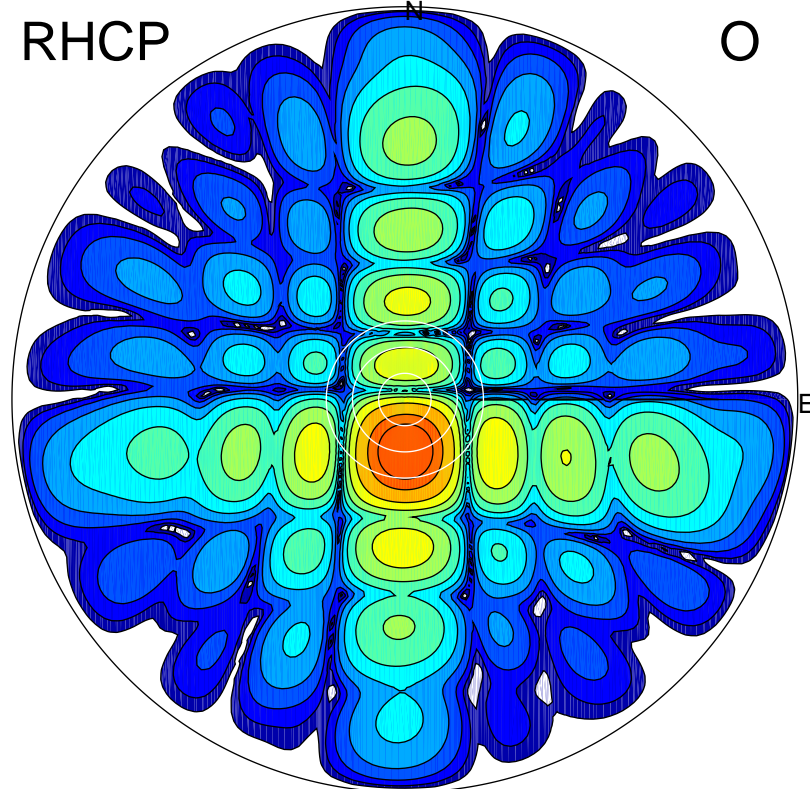
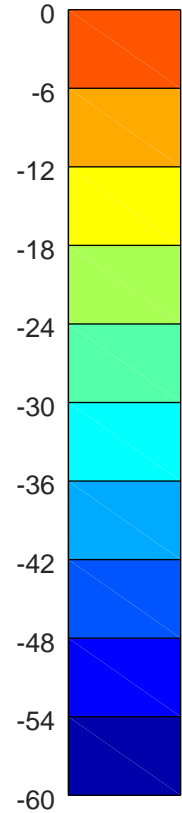
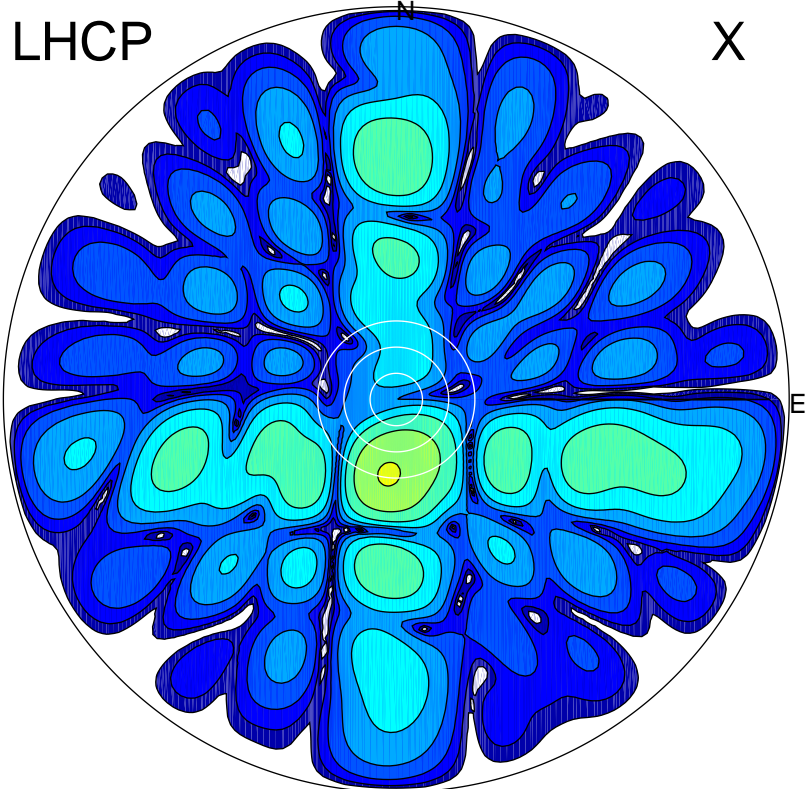


2019-10-17 11:02:10 A2 4.54400000 MHz 898.0 kW



### ERP 3.3 MW

Peak gain 5.6 dBi at Az 185 Zen 17  
RHCP gain 21.1 dBi  
N-S peak 5.4 dBi at Zen -17.0  
N-S -3 dB beamwidth 13.2 deg.

### ERP 184.7 MW

Peak gain 23.1 dBi at Az 179 Zen 12  
LHCP gain 3.9 dBi  
N-S peak 23.1 dBi at Zen -11.8  
N-S -3 dB beamwidth 12.6 deg.