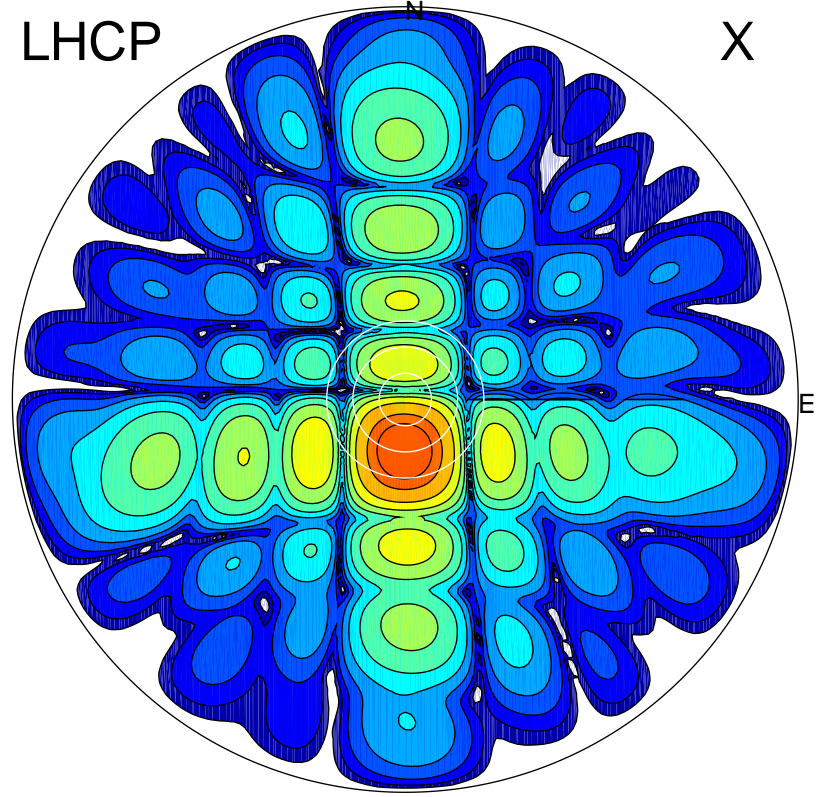


2019-10-16 14:20:10 A2 4.54400000 MHz 911.0 kW

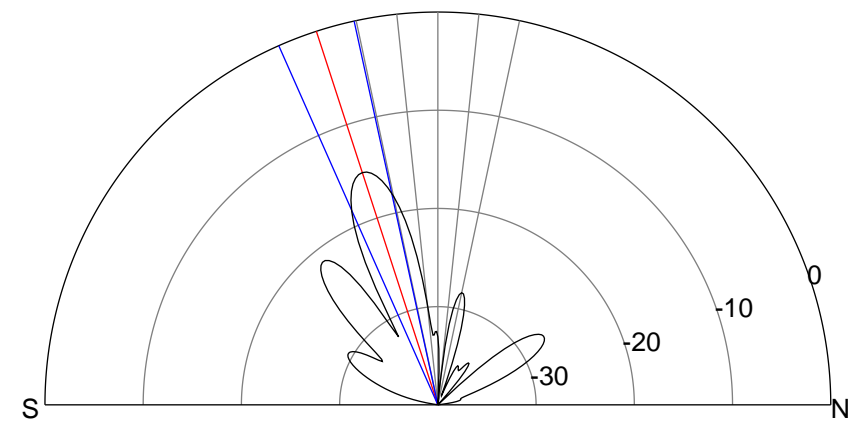
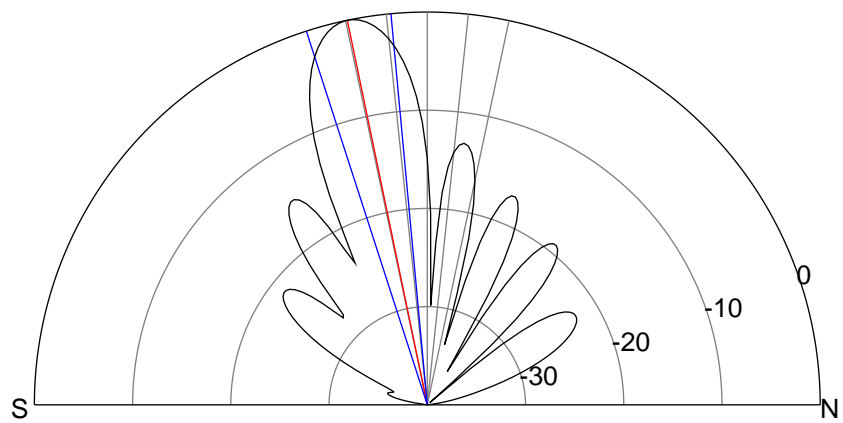
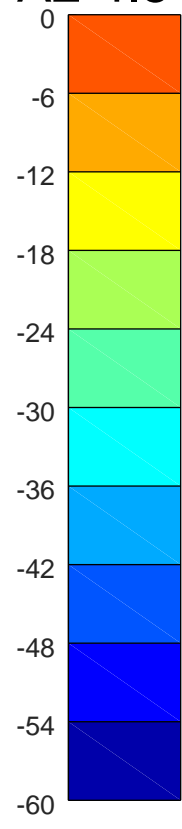
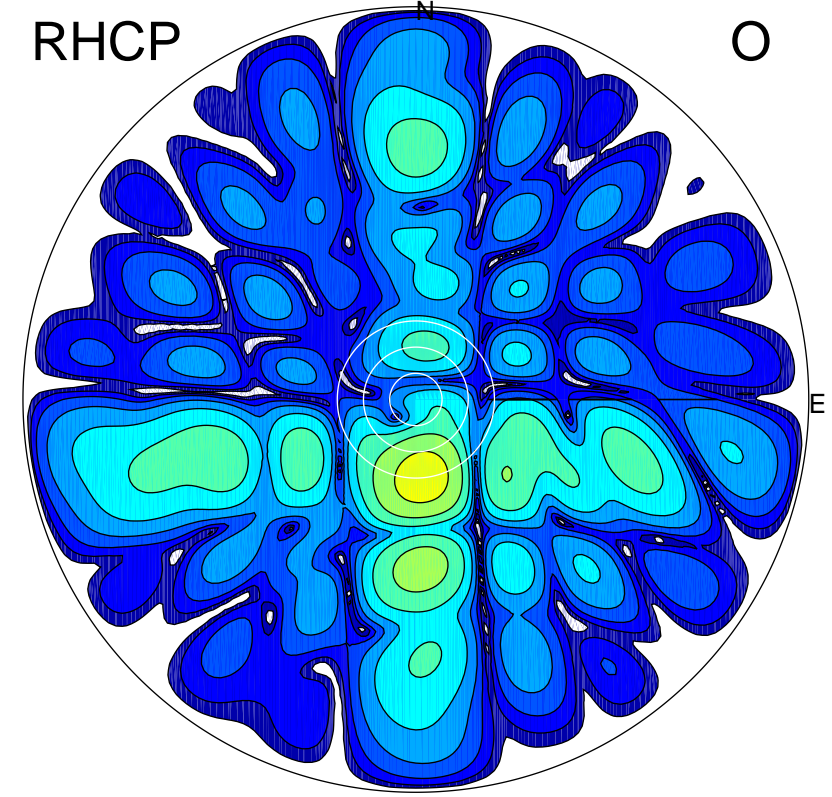
LHCP

X



RHCP

O



### ERP 185.2 MW

Peak gain 23.1 dBi at Az 182 Zen 12  
RHCP gain 4.6 dBi  
N-S peak 23.1 dBi at Zen -11.7  
N-S -3 dB beamwidth 12.6 deg.

### ERP 6.0 MW

Peak gain 8.2 dBi at Az 175 Zen 18  
LHCP gain 20.1 dBi  
N-S peak 7.9 dBi at Zen -18.0  
N-S -3 dB beamwidth 11.6 deg.