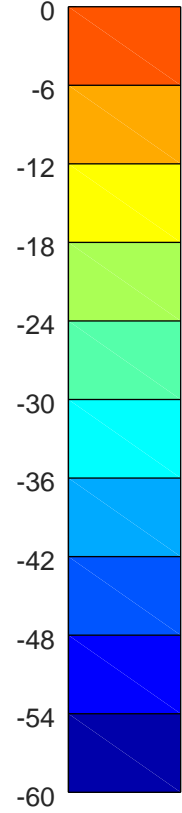
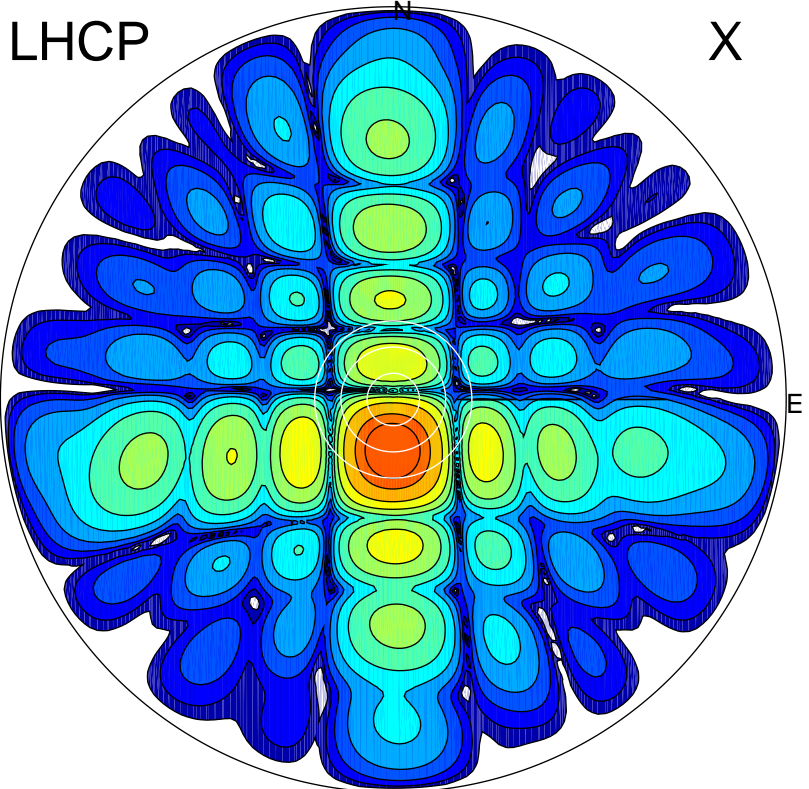


2019-10-16 14:04:50 A2 4.54400000 MHz 903.0 kW

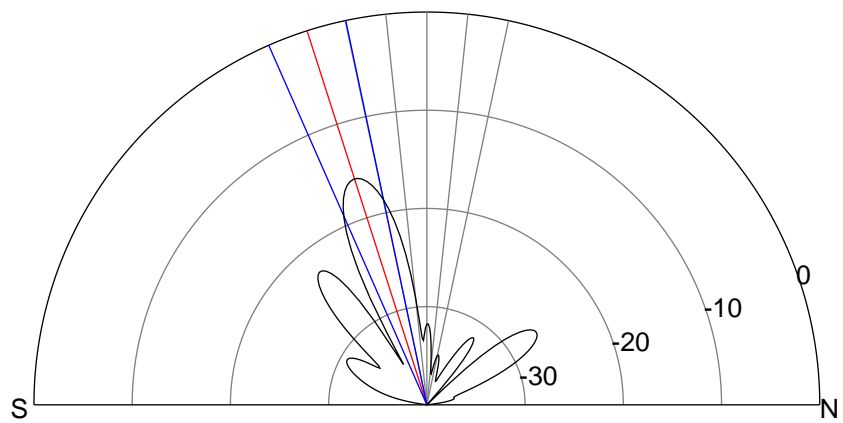
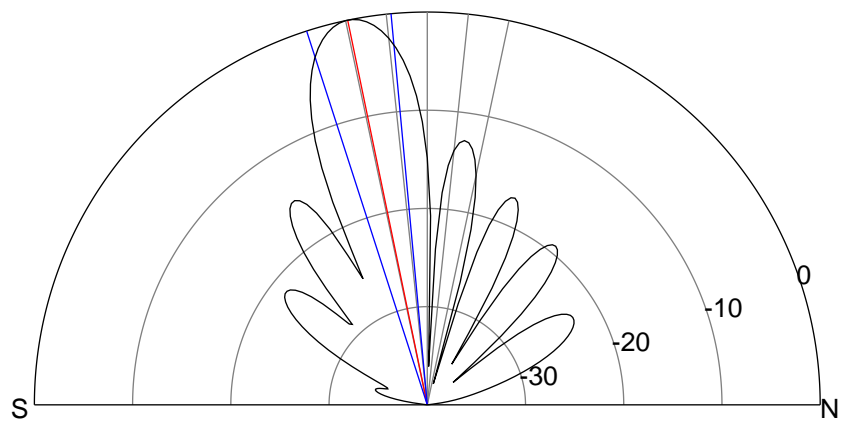
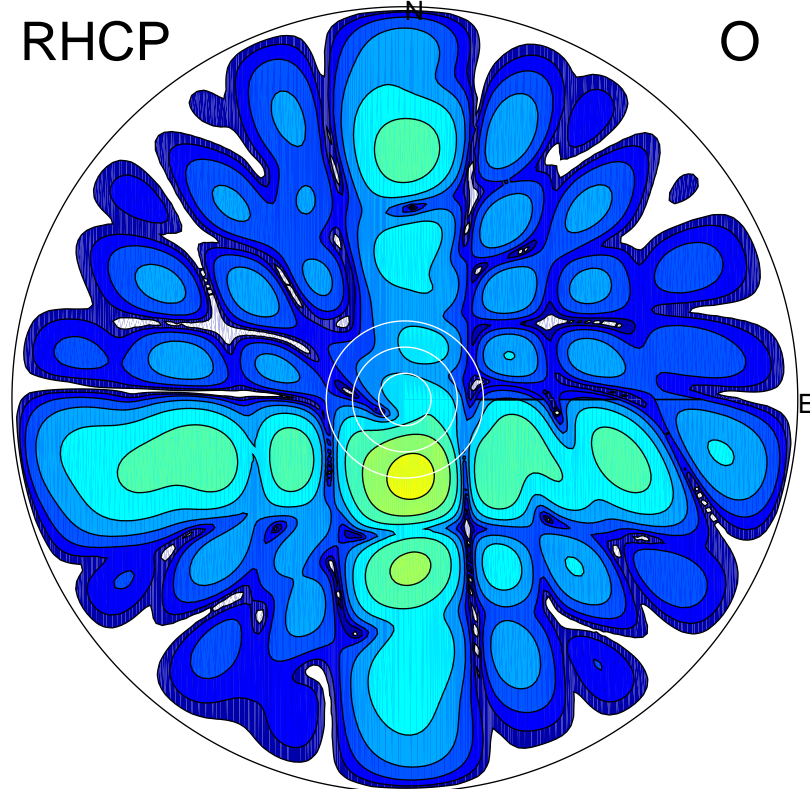
LHCP

X



RHCP

O



ERP 185.0 MW

Peak gain 23.1 dBi at Az 182 Zen 12
RHCP gain 4.4 dBi
N-S peak 23.1 dBi at Zen -11.7
N-S -3 dB beamwidth 12.6 deg.

ERP 5.0 MW

Peak gain 7.5 dBi at Az 175 Zen 18
LHCP gain 20.1 dBi
N-S peak 7.3 dBi at Zen -17.8
N-S -3 dB beamwidth 11.8 deg.