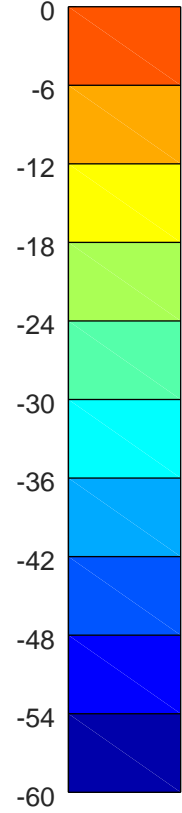
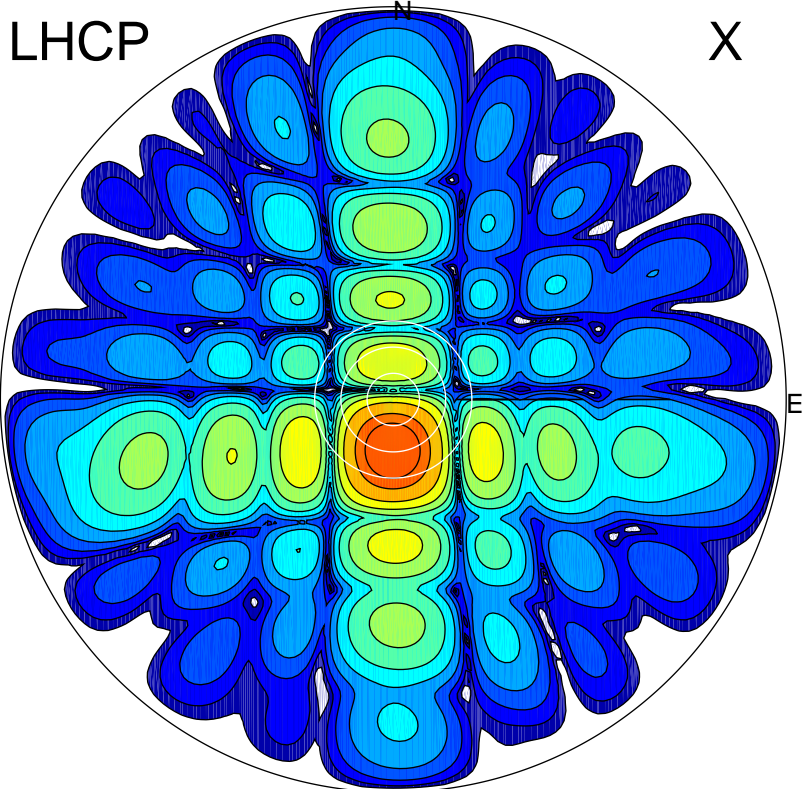


2019-10-16 13:49:50 A2 4.54400000 MHz 907.0 kW

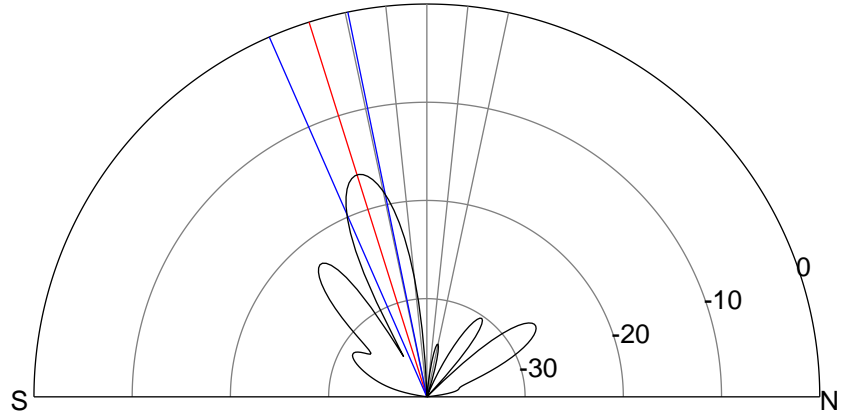
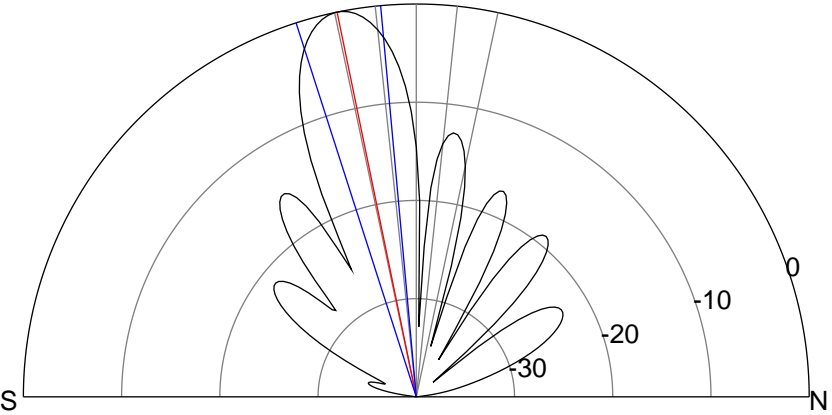
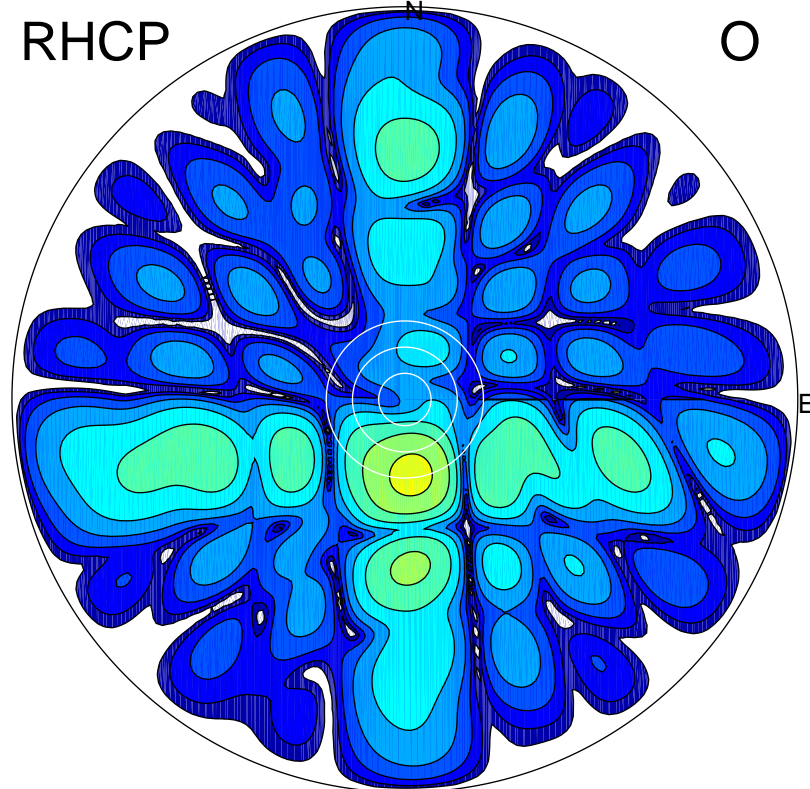
LHCP

X



RHCP

O



ERP 185.8 MW

Peak gain 23.1 dBi at Az 182 Zen 12
RHCP gain 4.4 dBi
N-S peak 23.1 dBi at Zen -11.6
N-S -3 dB beamwidth 12.6 deg.

ERP 4.5 MW

Peak gain 7.0 dBi at Az 175 Zen 17
LHCP gain 20.9 dBi
N-S peak 6.8 dBi at Zen -17.5
N-S -3 dB beamwidth 12.0 deg.