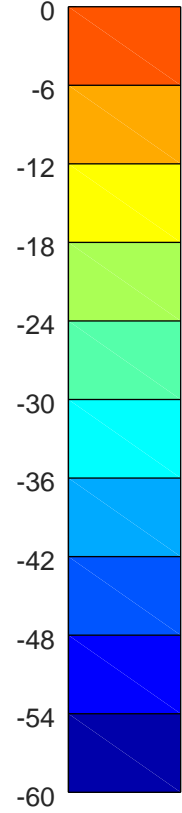
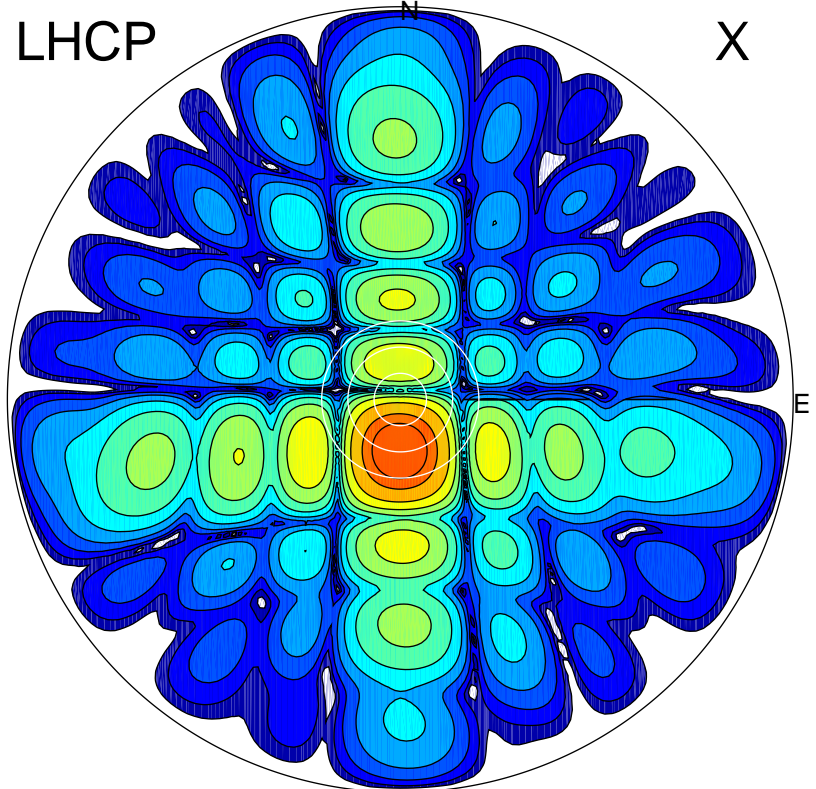


2019-10-16 13:47:10 A2 4.54400000 MHz 917.0 kW

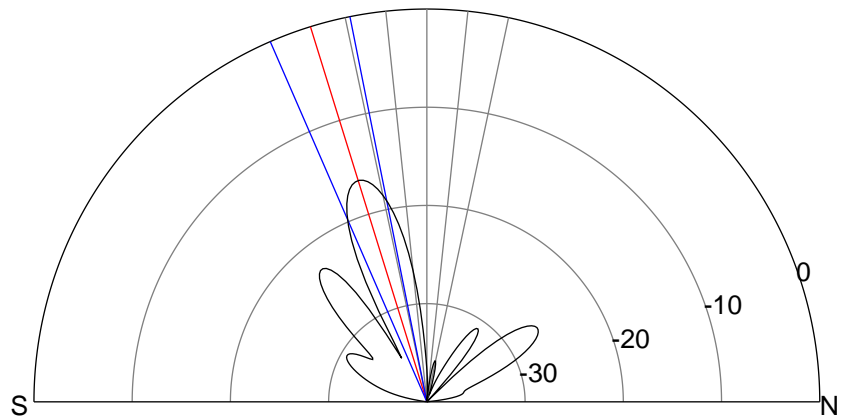
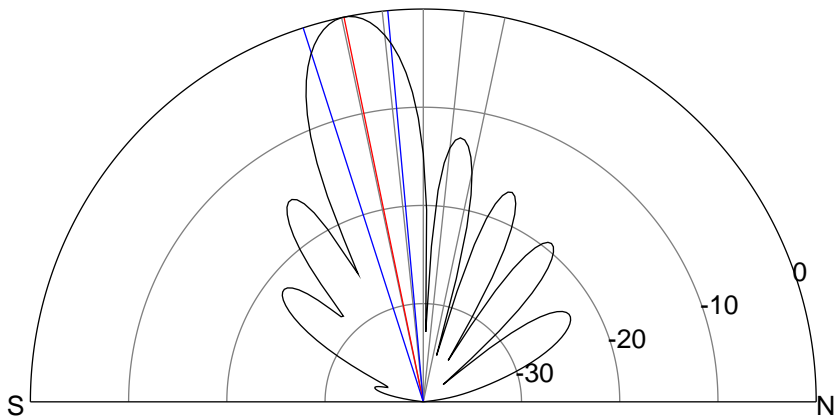
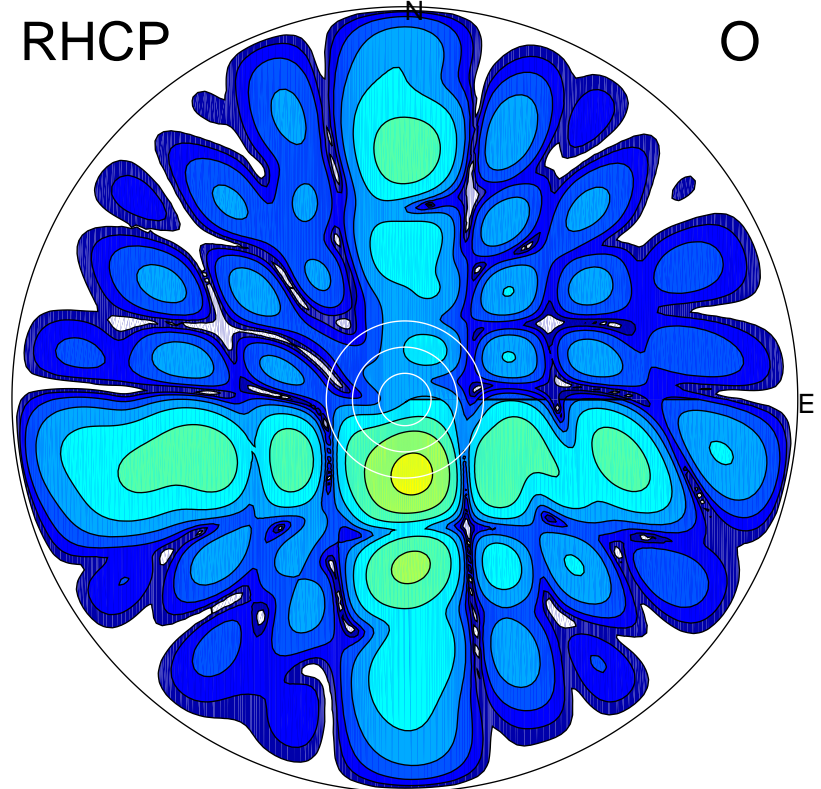
LHCP

X



RHCP

O



ERP 187.8 MW

Peak gain 23.1 dBi at Az 182 Zen 12
RHCP gain 4.5 dBi
N-S peak 23.1 dBi at Zen -11.6
N-S -3 dB beamwidth 12.6 deg.

ERP 4.6 MW

Peak gain 7.0 dBi at Az 174 Zen 17
LHCP gain 20.9 dBi
N-S peak 6.7 dBi at Zen -17.2
N-S -3 dB beamwidth 12.2 deg.