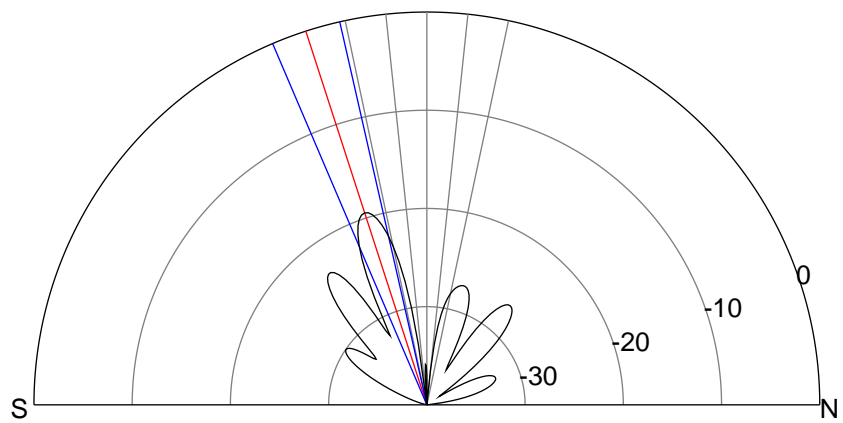
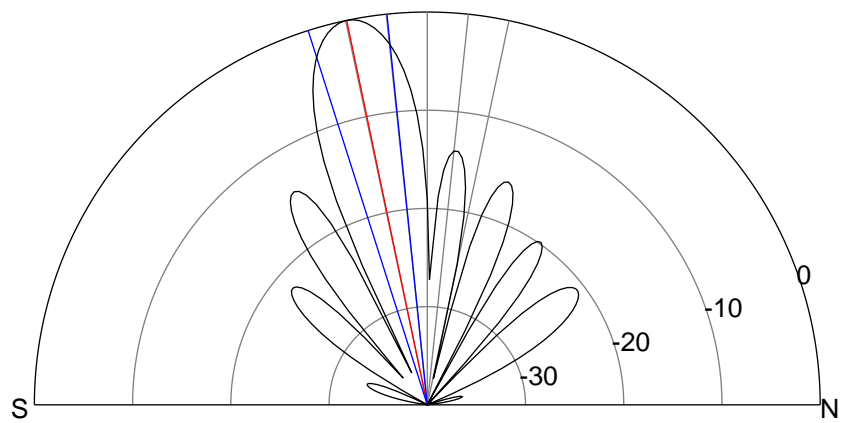
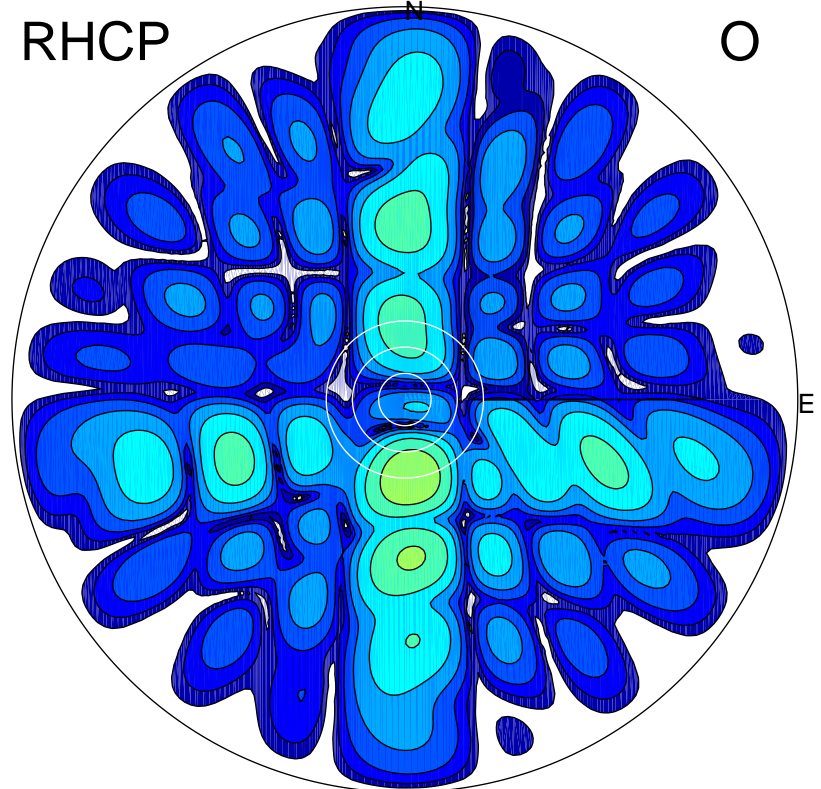
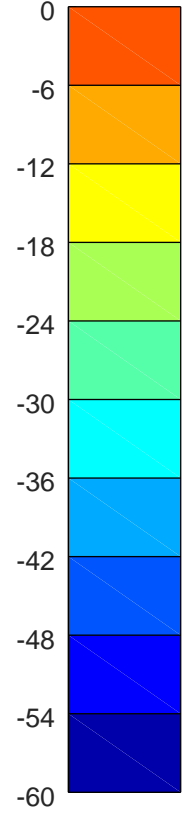
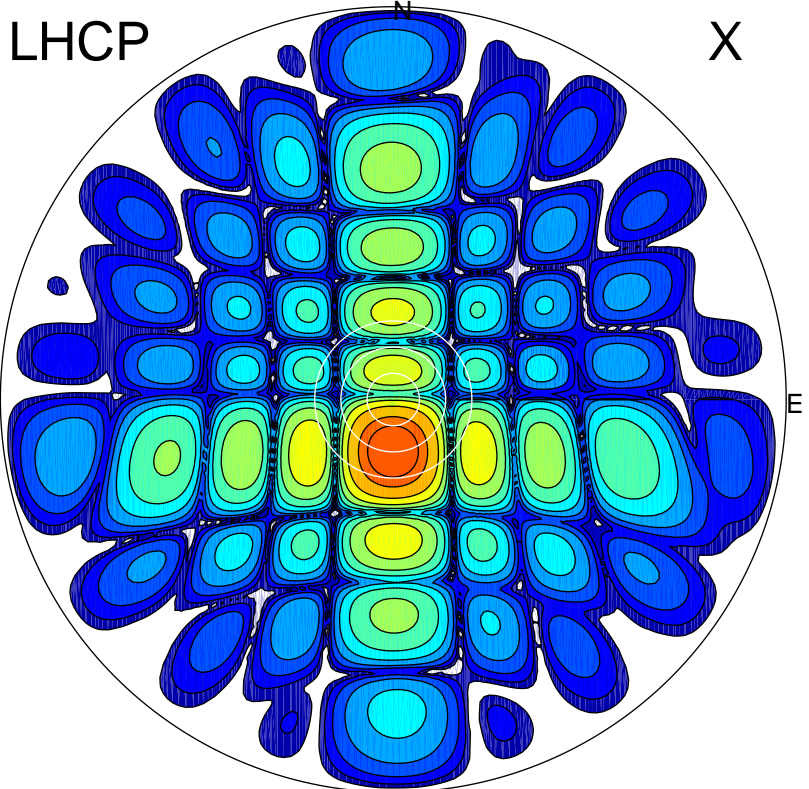


2019-10-16 13:19:50 A2 4.91280000 MHz 913.0 kW



ERP 221.2 MW

Peak gain 23.8 dBi at Az 181 Zen 12
RHCP gain 0.3 dBi
N-S peak 23.8 dBi at Zen -11.8
N-S -3 dB beamwidth 11.8 deg.

ERP 2.6 MW

Peak gain 4.6 dBi at Az 176 Zen 18
LHCP gain 20.5 dBi
N-S peak 4.4 dBi at Zen -17.9
N-S -3 dB beamwidth 10.3 deg.