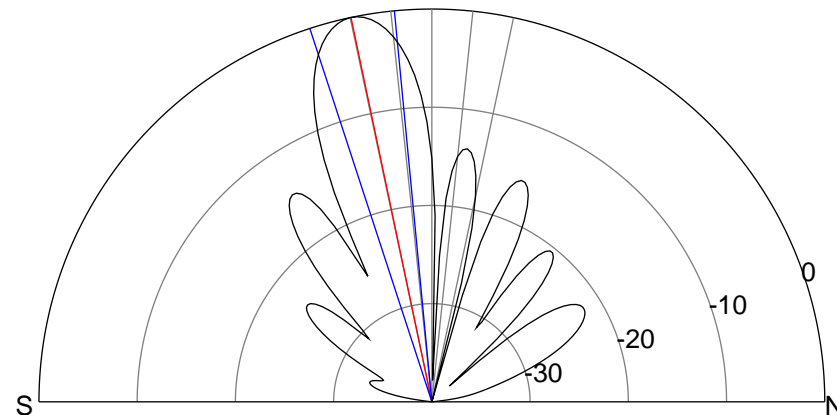
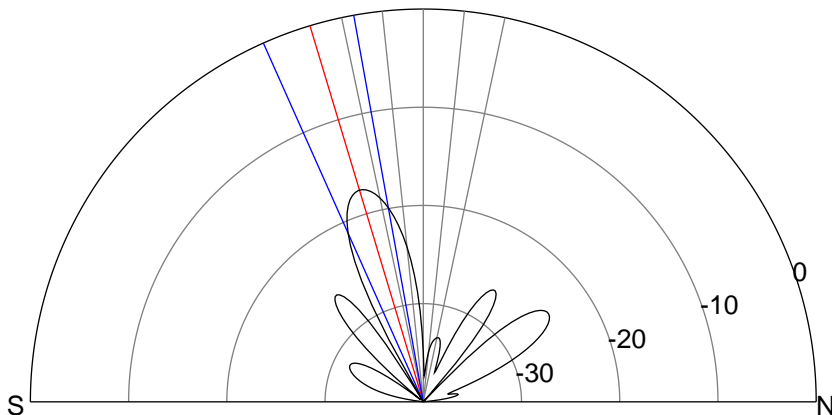
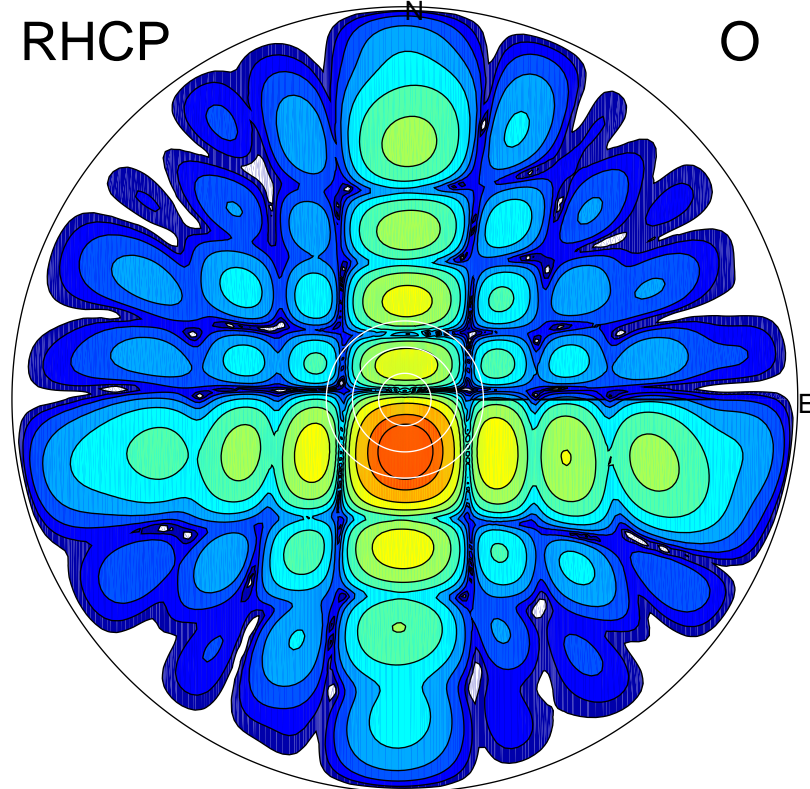
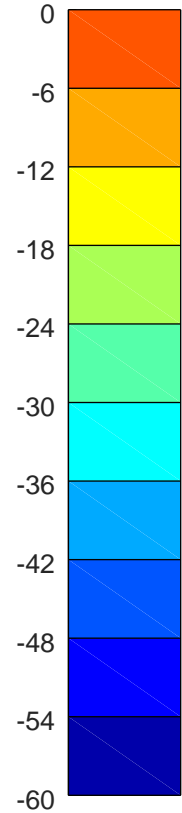
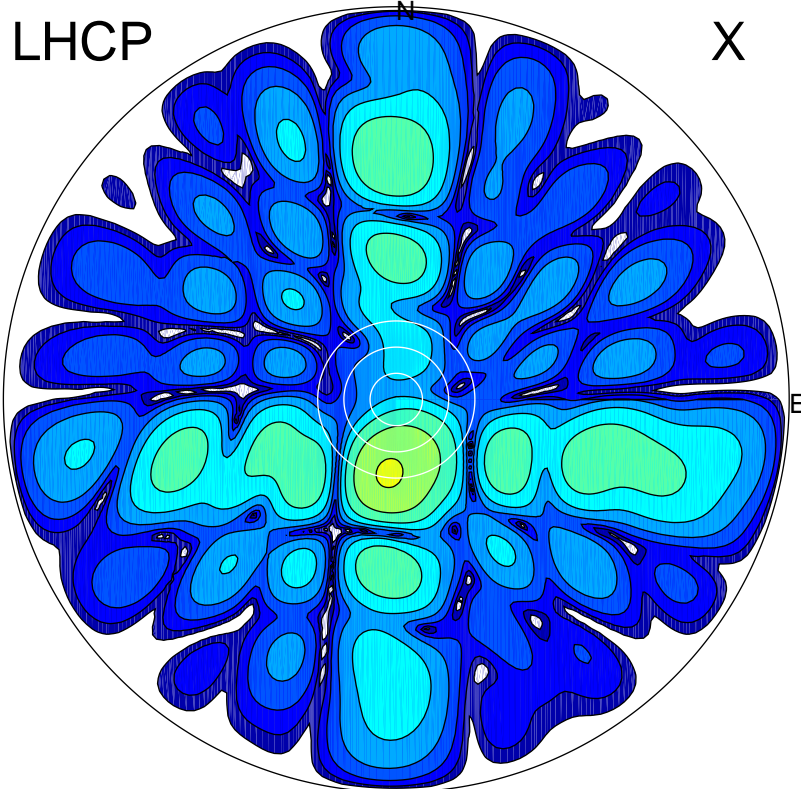


2019-10-16 12:34:50 A2 4.54400000 MHz 912.0 kW



ERP 3.5 MW

Peak gain 5.8 dBi at Az 186 Zen 17
RHCP gain 21.1 dBi
N-S peak 5.6 dBi at Zen -16.8
N-S -3 dB beamwidth 13.8 deg.

ERP 187.3 MW

Peak gain 23.1 dBi at Az 178 Zen 12
LHCP gain 4.3 dBi
N-S peak 23.1 dBi at Zen -11.9
N-S -3 dB beamwidth 12.6 deg.