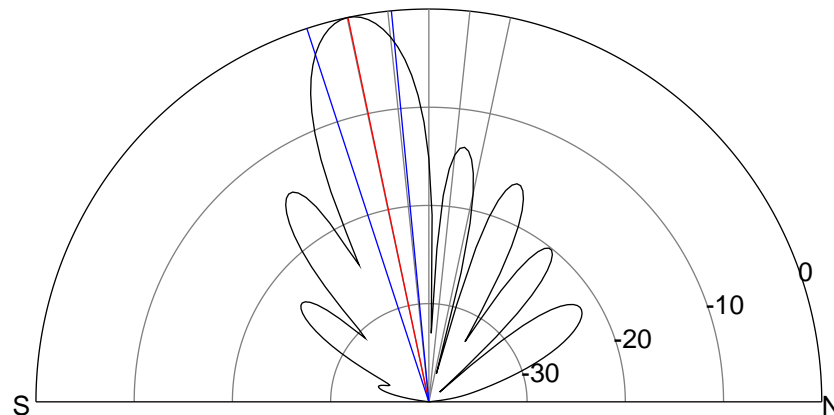
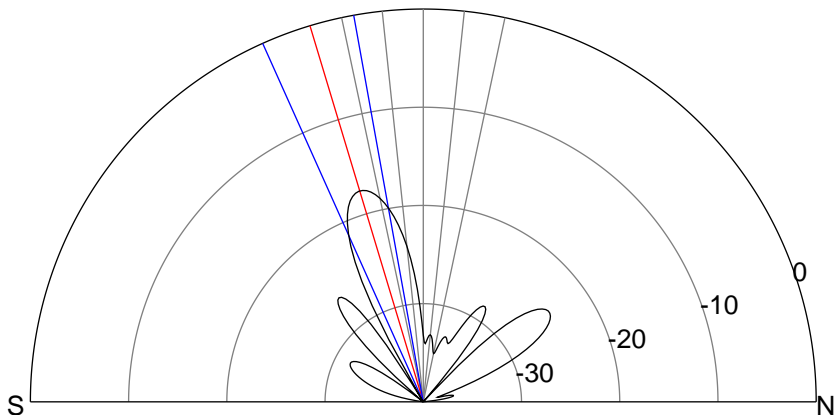
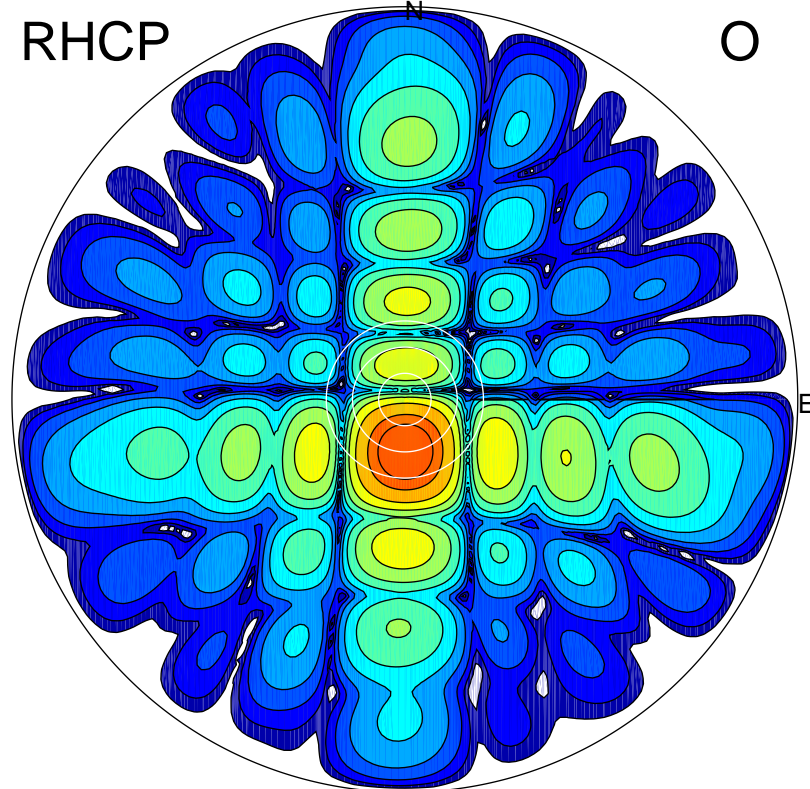
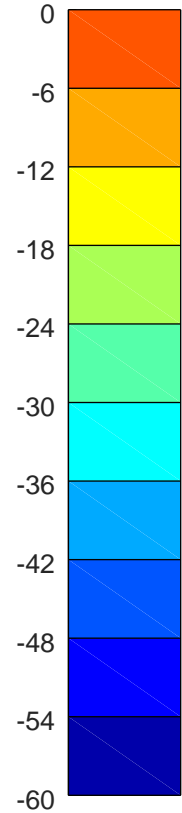
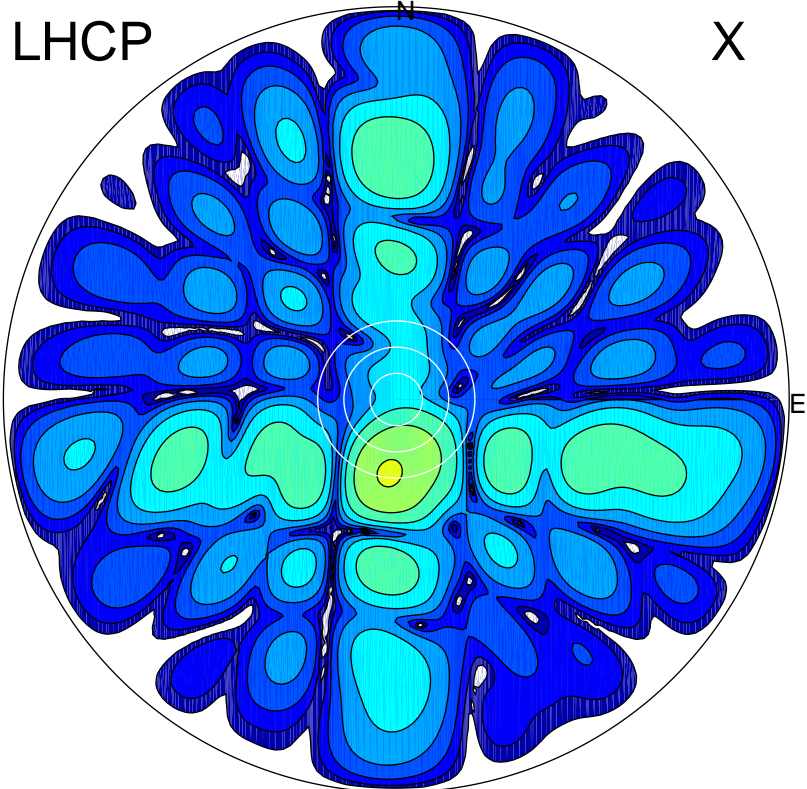


2019-10-16 12:02:10 A2 4.54400000 MHz 916.0 kW



ERP 3.4 MW

Peak gain 5.7 dBi at Az 185 Zen 17
RHCP gain 21.1 dBi
N-S peak 5.6 dBi at Zen -16.8
N-S -3 dB beamwidth 13.9 deg.

ERP 188.2 MW

Peak gain 23.1 dBi at Az 179 Zen 12
LHCP gain 4.3 dBi
N-S peak 23.1 dBi at Zen -11.9
N-S -3 dB beamwidth 12.6 deg.