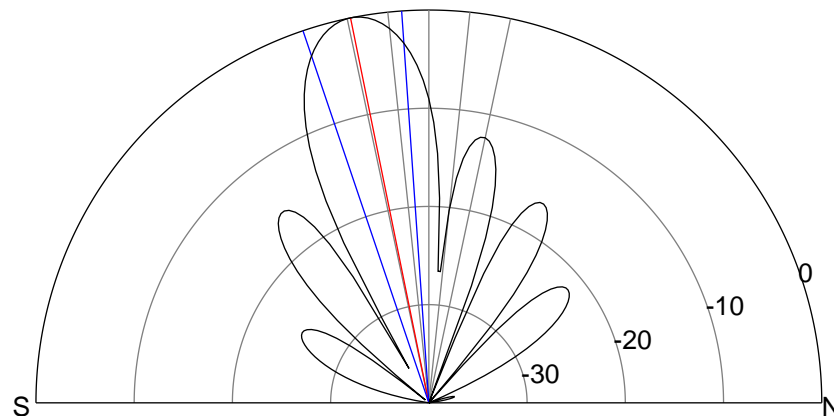
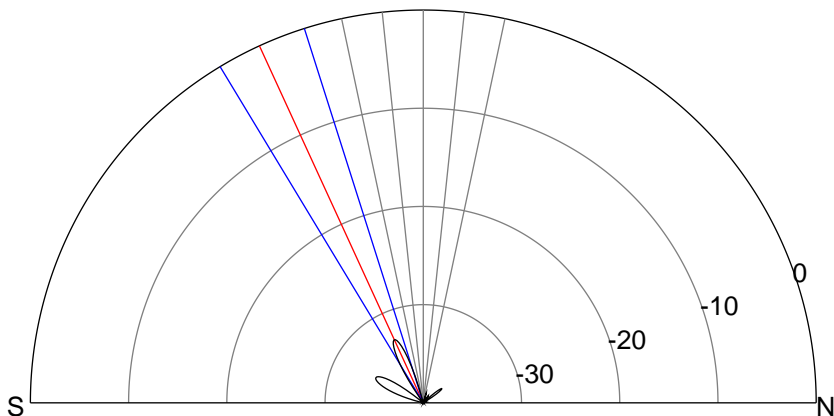
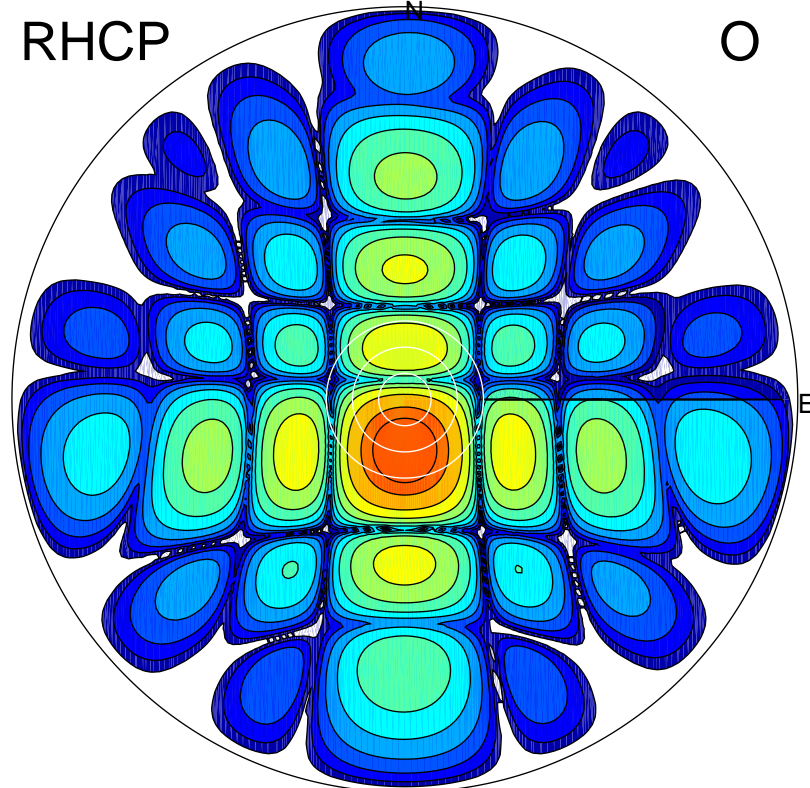
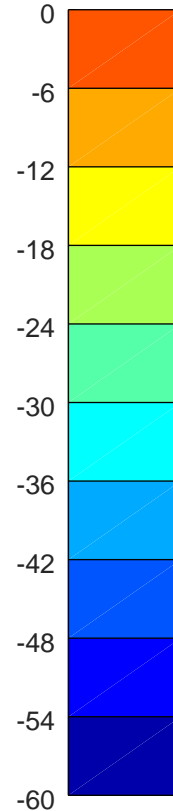
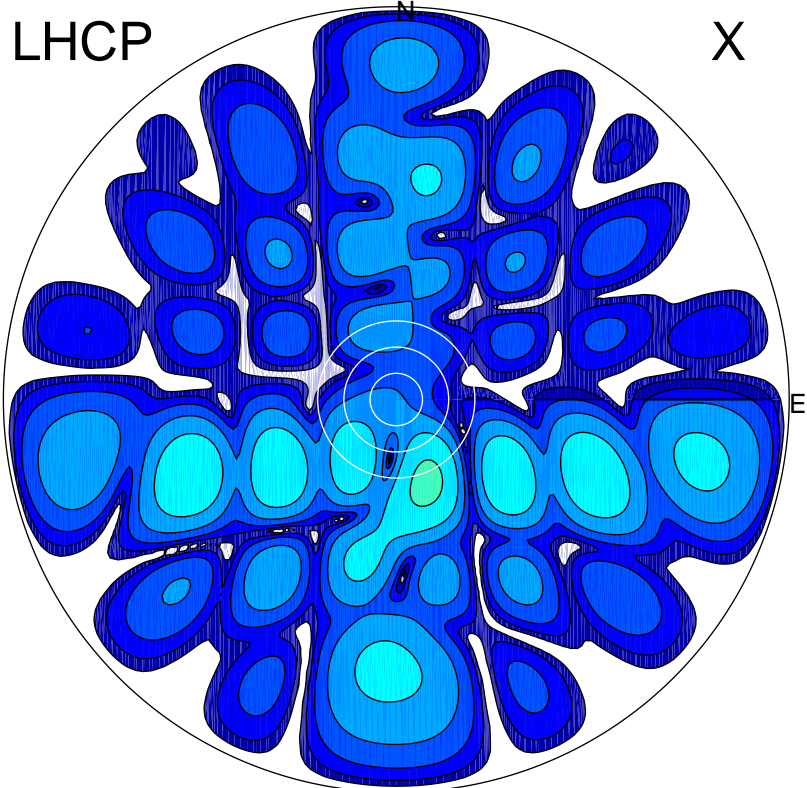


2018-12-10 17:45:30 A2 3.85000000 MHz 899.0 kW



### ERP 0.2 MW

Peak gain -6.4 dBi at Az 160 Zen 20  
RHCP gain 16.7 dBi  
N-S peak -10.9 dBi at Zen -24.6  
N-S -3 dB beamwidth 13.5 deg.

### ERP 143.2 MW

Peak gain 22.0 dBi at Az 181 Zen 12  
LHCP gain -22.8 dBi  
N-S peak 22.0 dBi at Zen -11.5  
N-S -3 dB beamwidth 14.7 deg.